



BRITISH
PROPERTY
AWARDS

2020 - 2021

★★★★★

GOLD WINNER

LETTING AGENT
IN LEIGH-ON-SEA



BRITISH
PROPERTY
AWARDS

2018-2019

★★★★★

GOLD WINNER

LETTING AGENT
IN LEIGH-ON-SEA



BRITISH
PROPERTY
AWARDS

2017

★★★★★

GOLD WINNER

ESTATE AGENT
IN LEIGH-ON-SEA



575-577 London Road, Westcliff on sea

STUNNING RENOVATED GROUND FLOOR APARTMENT: Castle Estate Agents are pleased to offer FOR SALE this 1 BEDROOM GROUND FLOOR APARTMENT set within a convenient and central location offering contemporary open plan living with a top quality finish by these AWARD WINNING DEVELOPERS.

- 1 Bedroom
- Completely renovated
- Open plan kitchen/Diner/Lounge
- Contemporary kitchen/Bathroom
- Walk to local shops
- Ground floor apartment
- Long lease
- Beautiful condition
- Walk to Station
- Walk to all bus routes

£200,000 Leasehold

Front aspect

Your own double glazed door with frosted glass insets set on Electric Avenue to:

Hallway

Amtico flooring, wall mounted electric heater, power points.

Open plan Lounge/Diner/Kitchen 15' by 10' 4" (4m 57cm by 3m 15cm), (I)

Double glazed window and door to the rear aspect, wall mounted electric heater, Amtico flooring, power points, tv point, down lighters, storage cupboard, 2 x sky lights, OPEN TO KITCHEN AREA.

Kitchen area

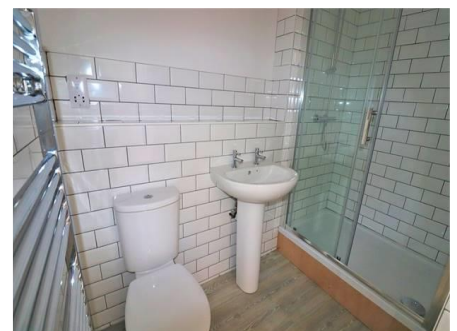
New eye level and base level units with boxed edge work surfaces incorporating a stainless steel sink and single drainer with mixer taps, 4 ring ceramic hob with under oven and over extractor fan, tiled splash backs, power points, integral washing machine and fridge freezer.

Bedroom 1 11' 8" by 9' 8" (3m 56cm by 2m 95cm), (I)

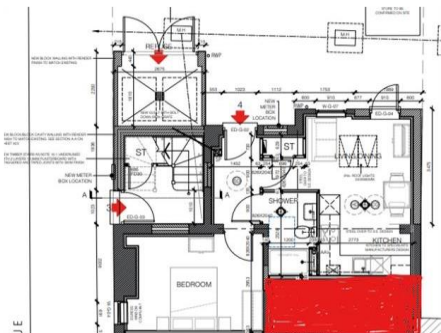
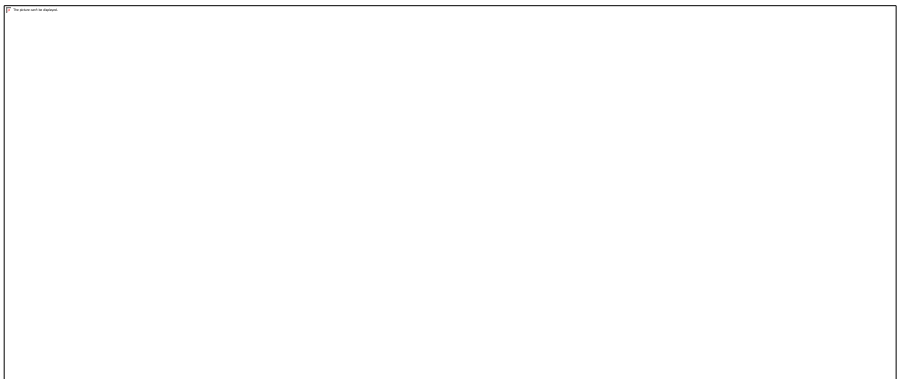
Double glazed window to the side aspect, New carpets, wall mounted electric heater, power points.

Bathroom

3 Piece white suite incorporating a low level flush toilet, hand wash basin with mixer taps, shower cubicle with mixer taps and wall mounted mains shower over, tiled splash backs, double glazed frosted window to the side aspect, down lighters, heated towel rail, Amtico flooring, shaver point.



Whilst we endeavour to make our sales particulars as accurate and reliable as possible, if there is any point which is of particular importance to you, please contact the office and we will be pleased to check the information. The mention of any appliances and/or services in these details does not imply that these are in full and efficient working order or have been inspected by ourselves. Please be advised that some of the particulars may be awaiting vendor approval. Please contact us should you have any queries and we will try our utmost to assist.



Whilst we endeavour to make our sales particulars as accurate and reliable as possible, if there is any point which is of particular importance to you, please contact the office and we will be pleased to check the information. The mention of any appliances and/or services in these details does not imply that these are in full and efficient working order or have been inspected by ourselves. Please be advised that some of the particulars may be awaiting vendor approval. Please contact us should you have any queries and we will try our utmost to assist.

GROUND FLOOR



Whilst every attempt has been made to ensure the accuracy of the floorplan contained here, measurements of doors, windows, rooms and any other items are approximate and no responsibility is taken for any error, omission or mis-statement. This plan is for illustrative purposes only and should be used as such by any prospective purchaser. The services, systems and appliances shown have not been tested and no guarantee as to their operability or efficiency can be given.
Made with Metropix ©2024

Whilst we endeavour to make our sales particulars as accurate and reliable as possible, if there is any point which is of particular importance to you, please contact the office and we will be pleased to check the information. The mention of any appliances and/or services in these details does not imply that these are in full and efficient working order or have been inspected by ourselves. Please be advised that some of the particulars may be awaiting vendor approval. Please contact us should you have any queries and we will try our utmost to assist.