



BRITISH
PROPERTY
AWARDS

2020 - 2021
★★★★★

GOLD WINNER

LETTING AGENT
IN LEIGH-ON-SEA



BRITISH
PROPERTY
AWARDS

2018-2019
★★★★★

GOLD WINNER

LETTING AGENT
IN LEIGH ON SEA



BRITISH
PROPERTY
AWARDS

2017
★★★★★

GOLD WINNER

ESTATE AGENT
IN LEIGH-ON-SEA



Fairfax Drive, Westcliff on sea

EXCELLENT LOCATION: Castle Estate Agents are pleased to offer FOR LET this LARGE FIRST FLOOR OFFICE set in this prime trading position on FAIRFAX ROAD benefiting from 4 SEPARATE OFFICES, SEPARATE KITCHEN, TOILET and OFF STREET PARKING X 3 CARS, within walking distance to PRITTLEWELL STATION.

- Large Office space
- Seperate kitchen
- Walk to stations
- Good condition
- On all bus routes
- Prime location
- 4 Receptions
- Separate Toilet
- Close to Priory park
- Off street parking x 3

£1200 PCM

Front aspect

Hard standing off street parking leading to hardwood door to communal hall.

Communal hall

Laminated wood flooring, radiator, double glazed window to front aspect with fitted blinds, Stairs to first floor and hardwood door to:



First floor landing

Doors to all rooms, newly decorated, power points.

Office 1 15' 9" by 14' (4m 80cm by 4m 27cm), ()

Carpeted, stripped lighting, power points, radiator, dual aspect double glazed windows to front and side aspect.



Reception 2 14' 2" by 11' (4m 32cm by 3m 35cm), ()

Carpeted, stripped lighting, power points, radiator, double glazed windows to side aspect.



Reception 3 11' 2" by 10' (3m 40cm by 3m 5cm), ()

Carpeted, stripped lighting, power points, radiator, double glazed windows to side aspect.



Reception 4

Carpeted, power points, radiator, double glazed windows to front aspect.

Kitchen 6' 8" by 6' 7" (2m 3cm by 2m 1cm), ()

Double glazed window to rear aspect, power points, base level units with boxed edge work surfaces, stainless steel double sink with single drainer, tiled splash backs.

Toilet

White low level flush toilet, hand wash basin with mixer taps, double glazed frosted window to side aspect, laminated wood flooring.



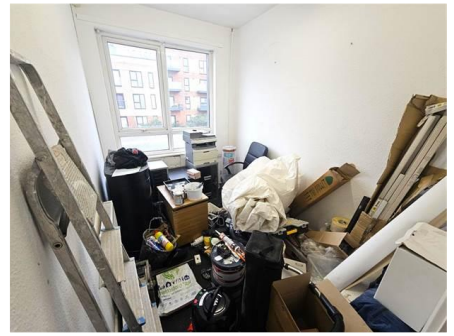
Whilst we endeavour to make our sales particulars as accurate and reliable as possible, if there is any point which is of particular importance to you, please contact the office and we will be pleased to check the information. The mention of any appliances and/or services in these details does not imply that these are in full and efficient working order or have been inspected by ourselves. Please be advised that some of the particulars may be awaiting vendor approval. Please contact us should you have any queries and we will try our utmost to assist.

Terms

Long let available.

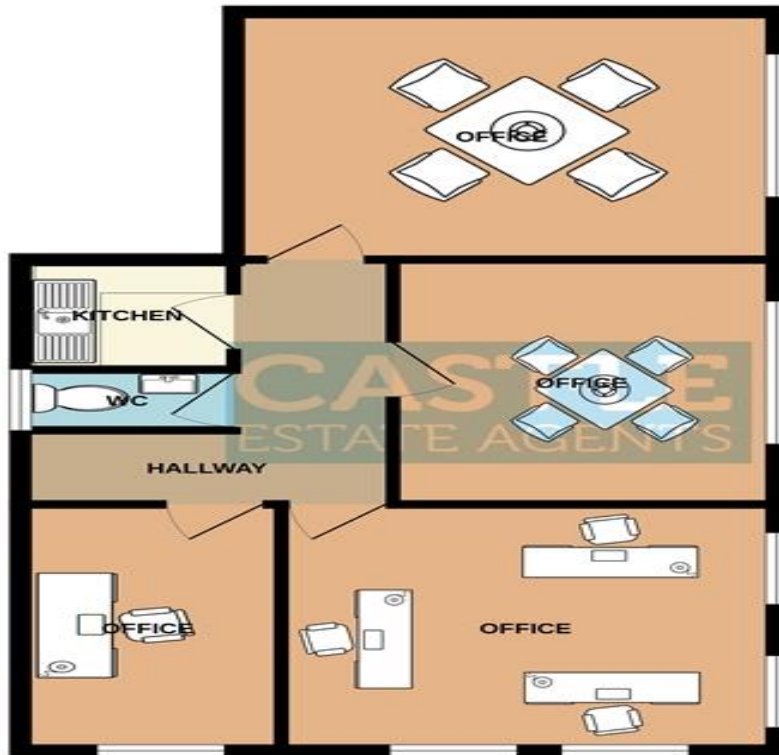
Viewings

VIEWING BY FIRM APPOINTMENT ONLY BY CONTACTING OUR OFFICE ON 01702 477754



Whilst we endeavour to make our sales particulars as accurate and reliable as possible, if there is any point which is of particular importance to you, please contact the office and we will be pleased to check the information. The mention of any appliances and/or services in these details does not imply that these are in full and efficient working order or have been inspected by ourselves. Please be advised that some of the particulars may be awaiting vendor approval. Please contact us should you have any queries and we will try our utmost to assist.

FIRST FLOOR



Whilst every attempt has been made to ensure the accuracy of the floorplan contained here, measurements of doors, windows, rooms and any other items are approximate and no responsibility is taken for any error, omission or mis-statement. This plan is for illustrative purposes only and should be used as such by any prospective purchaser. The services, systems and appliances shown have not been tested and no guarantee as to their operability or efficiency can be given.
Made with Metropix ©2004

Whilst we endeavour to make our sales particulars as accurate and reliable as possible, if there is any point which is of particular importance to you, please contact the office and we will be pleased to check the information. The mention of any appliances and/or services in these details does not imply that these are in full and efficient working order or have been inspected by ourselves. Please be advised that some of the particulars may be awaiting vendor approval. Please contact us should you have any queries and we will try our utmost to assist.