



BRITISH
PROPERTY
AWARDS

2020 - 2021

★ ★ ★ ★ ★

GOLD WINNER

LETTING AGENT
IN LEIGH-ON-SEA



BRITISH
PROPERTY
AWARDS

2018-2019

★ ★ ★ ★ ★

GOLD WINNER

LETTING AGENT
IN LEIGH ON SEA



BRITISH
PROPERTY
AWARDS

2017

★ ★ ★ ★ ★

GOLD WINNER

ESTATE AGENT
IN LEIGH-ON-SEA



London Road, Hadleigh

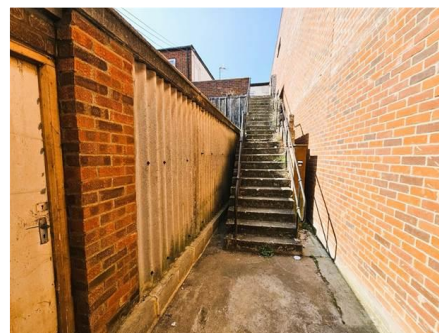
GREAT SIZED APARTMENT: Castle Estate Agents are pleased to offer FOR RENT this LARGE 3 DOUBLE bedroom first floor apartment set in this IDEAL LOCATION for HADLEIGH TOWN CENTER WITH ALL SHOPS, BARS, RESTAURANTS & ALL BUS ROUTES. This property has many benefits including a LARGE BALCONY.

- 3 Double Bedrooms
- Large balcony
- Modern bathroom
- New Carpets
- Walk to all amenities
- First floor
- Parking space
- Modern Kitchen
- Newly painted
- Available now

£1400 PCM

Front aspect

Rear access with stairs rising to the first floor and entrance to large balcony with double glazed door to:



Inner hallway

New carpets, newly painted, doors to all rooms, power points, 2 x radiators, loft access.



Lounge 20' 8" by 18' 3" (6m 30cm by 5m 56cm), (I)

2 x Double glazed windows to the front aspect with fitted blinds, coving, new carpets, newly painted, power points, tv point, 2 x radiators, down lighters.



Kitchen 12' 5" by 10' 3" (3m 78cm by 3m 12cm), (I)

Double glazed window front aspect with fitted blinds, radiator, eye level and base level units, roll top work surfaces incorporating a stainless steel sink and drainer with mixers taps, 4 ring ceramic hob, under oven and over extractor fan, power points, tiled splash backs, space for fridge/freezer and washing machine, new flooring, coving, power points, storage cupboard with radiator, wall mounted boiler.



Bedroom 1 18' 6" by 16' 1" (5m 64cm by 4m 90cm), (I)

2 x Radiator, 2 x double glazed window to the rear aspect with fitted blinds, new carpets, newly painted, power points, spot lights, storage cupboard, fitted wardrobes.



Bedroom 2 17' 8" by 7' 8" (5m 38cm by 2m 34cm), (I)

Radiator, double glazed window to the rear with fitted blinds, new carpets, newly painted, power points, coving, spot lights, power points.

Bedroom 3 16' 7" by 8' (5m 5cm by 2m 44cm)


Radiator, double glazed window to the rear with fitted blinds, new carpets, newly painted, power points, coving, spot lights, power points.


Whilst we endeavour to make our sales particulars as accurate and reliable as possible, if there is any point which is of particular importance to you, please contact the office and we will be pleased to check the information. The mention of any appliances and/or services in these details does not imply that these are in full and efficient working order or have been inspected by ourselves. Please be advised that some of the particulars may be awaiting vendor approval. Please contact us should you have any queries and we will try our utmost to assist.

Bathroom

3 Piece White suite comprising of a hand wash basin in vanity unit with mixer taps, panel enclosed bath with wall mounted electric shower, low level flush toilet, tiled splash backs, heated towel rail, double glazed frosted window to the side aspect, new flooring, shaving point.



Energy Efficiency Rating		
	Current	Potential
Very energy efficient - lower running costs		
(92-100) A		
(81-91) B		
(69-80) C		
(55-68) D	63	71
(39-54) E		
(21-38) F		
(1-20) G		
Not energy efficient - higher running costs		
England & Wales	EU Directive 2002/91/EC 	

Environmental (CO ₂) Impact Rating		
	Current	Potential
Very environmentally friendly - lower CO ₂ emissions		
(92-100) A		
(81-91) B		
(69-80) C		
(55-68) D	66	71
(39-54) E		
(21-38) F		
(1-20) G		
Not environmentally friendly - higher CO ₂ emissions		
England & Wales	EU Directive 2002/91/EC 	

Whilst we endeavour to make our sales particulars as accurate and reliable as possible, if there is any point which is of particular importance to you, please contact the office and we will be pleased to check the information. The mention of any appliances and/or services in these details does not imply that these are in full and efficient working order or have been inspected by ourselves. Please be advised that some of the particulars may be awaiting vendor approval. Please contact us should you have any queries and we will try our utmost to assist.

