

Development Site @ Carnival Court, Taunton Road,

Auction Guide Price +++ £425,000



- FOR SALE BY ONLINE AUCTION
- WEDNESDAY 19TH NOVEMBER 2025
- VIDEO TOUR NOW ONLINE
- VIEWINGS – REFER TO DETAILS
- DOWNLOAD FREE LEGAL PACK
- NOVEMBER LIVE ONLINE AUCTION
- FREEHOLD DEVELOPMENT SITE
- PLANNING GRANTED | 1.26 ACRES
- GDV circa £3.2m | 9 X DETACHED HOUSES
- EXTENDED 8 WEEK COMPLETION

Hollis Morgan – NOVEMBER LIVE ONLINE AUCTION – A Freehold DEVELOPMENT SITE (1.26 acres) with PLANNING GRANTED for a scheme of 9 x 3 BED HOUSES (circa 1000 Sq Ft) with a GDV of circa £3.2m

Development Site @ Carnival Court, Taunton Road, Bridgwater, Somerset, TA6 6AF

Accommodation

FOR SALE BY LIVE ONLINE AUCTION

ADDRESS | Development Site @ Carnival Court, Taunton Road Bridgwater, Somerset TA6 6AF

Lot Number TBC

*** PLEASE NOTE NEW AUCTION START TIME - NOW 12:00 ***

The Live Online Auction is on Wednesday 19th November 2025 @ 12:00 Noon
Registration Deadline is on Friday 14th November 2025 @ 16:00

The Auction will be streamed LIVE ONLINE via the Hollis Morgan website & you can chose to bid by telephone, proxy or via your computer.
Registration is a simple online process – please visit the Hollis Morgan auction website and click “REGISTER TO BID”

THE SITE

Freehold site of approximately 1.26 acres with DETAILED PLANNING GRANTED for 9 x 3 bedroom houses at the rear of the recently built apartments facing Taunton Road.
Sold with Vacant Possession

Tenure - Freehold

Utilities, Rights & Restrictions - Please refer to the Legal Pack

Flood Risk - Please refer to the Legal Pack

THE OPPORTUNITY

DEVELOPMENT SITE | PLANNING GRANTED

Detailed Planning (08/21/00077 Somerset Council) has been granted for the demolition of the existing structures and construction of a modern scheme of 9 x 3 bedroom dwellings (ranging 968 SqFt to 1054 Sq Ft) with parking and gardens and a proposed GDV ranging between £3.055m and £3.2m.

PROPOSED SCHEDULE OF DEVELOPMENT

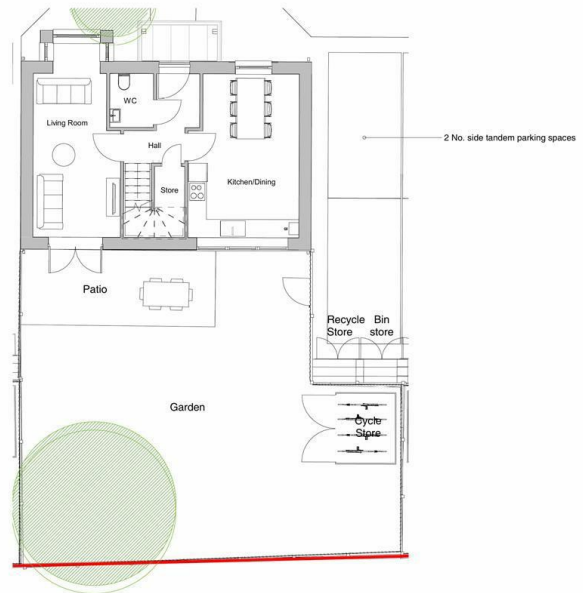
Unit 1 – 3 Bedroom Detached House | 1054 Sq Ft | Parking | Garden
Unit 2 – 3 Bedroom Detached House | 1054 Sq Ft | Parking | Garden
Unit 3 – 3 Bedroom Semi Detached House | 1054 Sq Ft | Parking | Garden
Unit 4 – 3 Bedroom Semi Detached House | 968 Sq Ft | Parking | Garden
Unit 5 – 3 Bedroom Semi Detached House | 968 Sq Ft | Parking | Garden
Unit 6 – 3 Bedroom Semi Detached House | 1054 Sq Ft | Parking | Garden
Unit 7 – 3 Bedroom Detached House | 1054 Sq Ft | Parking | Garden
Unit 8 – 3 Bedroom Detached House | 1054 Sq Ft | Parking | Garden
Unit 9 – 3 Bedroom Detached House | 1054 Sq Ft | Parking | Garden

PROPOSED GDV SCHEDULE

Unit 1 – £350,000 - £365,000
Unit 2 – £350,000 - £365,000
Unit 3 – £330,000 - £350,000
Unit 4 – £320,000 - £335,000
Unit 5 – £320,000 - £335,000
Unit 6 – £330,000 - £350,000
Unit 7 – £350,000 - £365,000
Unit 8 – £350,000 - £365,000
Unit 9 – £350,000 - £365,000
Total - £3.055m - £3.2m

For further information on GDV and sales advice please contact the Hollis Morgan New Homes Team.

Floor plan



House Type 3 Bedroom - Ground Floor
1 : 100

EPC Chart



9 Waterloo Street
Clifton
Bristol
BS8 4BT
Tel: 0117 973 6565
Email: post@hollismorgan.co.uk
www.hollismorgan.co.uk

Hollis Morgan Property Limited, registered in England, registered 7275716.
Registered address, 5 Upper Belgrave Road, Clifton, Bristol BS8 2XQ

Auction Property Details Disclaimer

Hollis Morgan endeavour to make our sales details clear, accurate and reliable in line with the Consumer Protection from Unfair Trading Regulations 2008 but they should not be relied on as statements or representations of fact.

Please refer to our website for further details.