

Hewish Court East Hewish, Hewish, North Somerset, BS24 6RZ

Sold @ Auction £440,000



- FOR SALE BY ONLINE AUCTION
- WEDNESDAY 19TH NOVEMBER 2025
- VIRTUAL TOUR NOW ONLINE
- VIEWINGS – REFER TO DETAILS
- LEGAL PACK COMPLETE
- SOLD @ NOVEMBER LIVE ONLINE AUCTION
- FREEHOLD DETACHED PROPERTY
- MODERNISATION | 2.91 ACRES
- SCOPE FOR STUNNING HOME / DEVELOPMENT
- EXTENDED 8 WEEK COMPLETION

Hollis Morgan – NOVEMBER LIVE ONLINE AUCTION – A Freehold DETACHED PROPERTY (6483 Sq Ft) now in need of MODERNISATION on a mature 2.91 ACRE PLOT | Scope for STUNNING FAMILY HOME or DEVELOPMENT stc

Hewish Court East Hewish, Hewish, North Somerset, BS24 6RZ

Accommodation

FOR SALE BY LIVE ONLINE AUCTION

*** SOLD @ NOVEMBER LIVE ONLINE AUCTION ***

GUIDE PRICE £250,000 +++
SOLD @ £440,000

ADDRESS | Hewish Court, East Hewish North Somerset, BS24 6RZ

Lot Number 2

*** PLEASE NOTE NEW AUCTION START TIME - NOW 12:00 ***

The Live Online Auction is on Wednesday 19th November 2025 @ 12:00
Registration Deadline is on Friday 14th November 2025 @ 17:00

The Auction will be streamed LIVE ONLINE via the Hollis Morgan website & you can choose to bid by telephone, proxy or via your computer.
Registration is a simple online process – please visit the Hollis Morgan auction website and click “REGISTER TO BID”

PRE AUCTION OFFERS

On this occasion the vendors will NOT be considering pre auction offers.

THE PROPERTY

Hewish Court is a Freehold stone built property (6483 Sq Ft) occupying a mature 2.91 Acre site. The property has various access vehicular points with a gated driveway and off street parking. The accommodation is arranged in an attractive courtyard style alongside a range of stables and outbuildings plus a large garage / barn.
We understand the property is not listed.
Sold with vacant possession.

Tenure - Freehold
Council Tax - Band C
EPC - G

THE OPPORTUNITY

DETACHED | MODERNISATION

The property has been vacant for a number of years and now requires complete modernisation but has huge potential.
There is scope for either an outstanding detached family home or a development of smaller individual units.
All subject to gaining the necessary planning consents - Interested parties to make their own investigations.

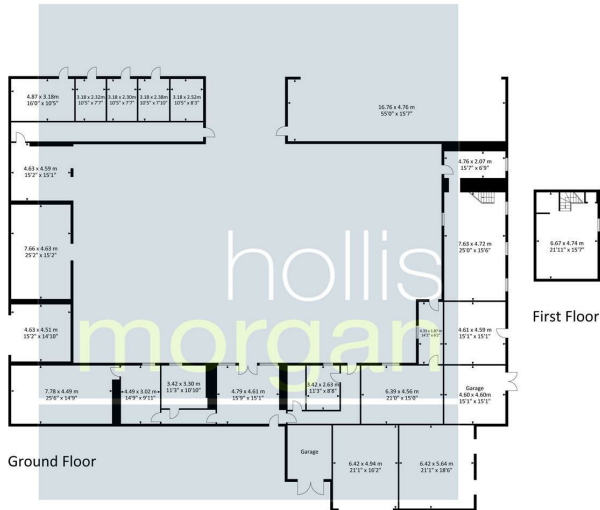
PLANNING HISTORY | 1996

95/1166 - Conversion of farm buildings to dwelling, with ancillary artists studio/store room kitchen and dark room. Refurbishment of existing stables Farm Buildings At Hewish Farm East Hewish Puxton Avon BS24 6RZ
* Please note although this refers to Hewish Farm the planning documents show the property location as Hewish Court.

Floor plan

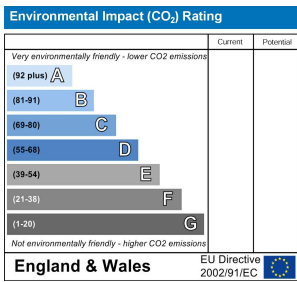
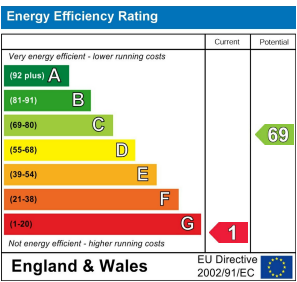
Hewish Court,
Hewish BS24 6RZ

Approx. Gross Internal Area
6483.90 Sq.Ft - 602.40 Sq.M



For illustrative purposes only. Not to scale.
Whilst every attempt has been made to ensure accuracy of the floor plan all measurements are approximate and no responsibility is taken for any error, omission or measurement.

EPC Chart



9 Waterloo Street

Clifton

Bristol

BS8 4BT

Tel: 0117 973 6565

Email: post@hollismorgan.co.uk

www.hollismorgan.co.uk

Hollis Morgan Property Limited, registered in England, registered 7275716.
Registered address, 5 Upper Belgrave Road, Clifton, Bristol BS8 2XQ

Auction Property Details Disclaimer

Hollis Morgan endeavour to make our sales details clear, accurate and reliable in line with the Consumer Protection from Unfair Trading Regulations 2008 but they should not be relied on as statements or representations of fact.

Please refer to our website for further details.