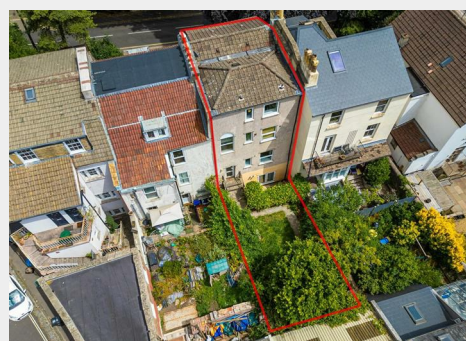


## 41 Ashley Hill, Montpelier, Bristol, BS6 5JA

Auction Guide Price +++ £625,000



- FOR SALE BY ONLINE AUCTION
- WEDNESDAY 17th SEPTEMBER 2025
- VIRTUAL TOUR NOW ONLINE
- VIEWINGS – REFER TO DETAILS
- DOWNLOAD FREE LEGAL PACK
- SEPTEMBER LIVE ONLINE AUCTION
- FREEHOLD BLOCK OF FLATS
- 4 X 1 BEDS | 4 X PARKING
- UPDATING | VACANT
- EXTENDED 6 WEEK COMPLETION

Hollis Morgan – SEPTEMBER LIVE ONLINE AUCTION – A Freehold PERIOD PROPERTY ( 2203 Sq Ft ) arranged as 4 X FLATS in need of UPDATING with PARKING and GARDEN.

# 41 Ashley Hill, Montpelier, Bristol, BS6 5JA

## Accommodation

### FOR SALE BY LIVE ONLINE AUCTION

ADDRESS | 41 Ashley Hill, Montpelier, Bristol BS6 5JA

Lot Number TBC

The Live Online Auction is on Wednesday 17th September 2025 @ 17:30  
Registration Deadline is on Monday 15th September 2025 @ 16:00

The Auction will be streamed LIVE ONLINE via the Hollis Morgan website & you can chose to bid by telephone, proxy or via your computer.  
Registration is a simple online process – please visit the Hollis Morgan auction website and click “REGISTER TO BID”

### THE PROPERTY

An imposing Freehold mid terraced period property with 2X tandem parking spaces ( suitable for 4 small vehicles ) to the front and a large enclosed rear garden located on the Montpelier / Ashley Hill / St Andrews borders. The accommodation ( 2203 Sq Ft ) is arranged as four self contained 1 bedroom flats over four floors with generous communal areas plus stunning views over the City from the upper floors.  
Sold with vacant possession.

Tenure - Freehold ( Plus 4 Separate Leases ) \*

Council Tax - Band A

EPC - Basement Flat E | Garden Flat E | First Floor D | Top Floor Flat F

### SCHEDULE OF ACCOMODATION

FLAT 1 | 575 Sq Ft

Lower Ground Floor | Private Entrance | Open Plan Kitchen / Living Space | Bedroom | Bathroom | Courtyard Garden

FLAT 2 | 580 Sq Ft

Hall Floor | Communal Entrance | Open Plan Kitchen / Living Space | Bedroom | Bathroom

FLAT 3 | 536 Sq Ft

First Floor | Communal Entrance | Kitchen | Reception | Bedroom | Bathroom

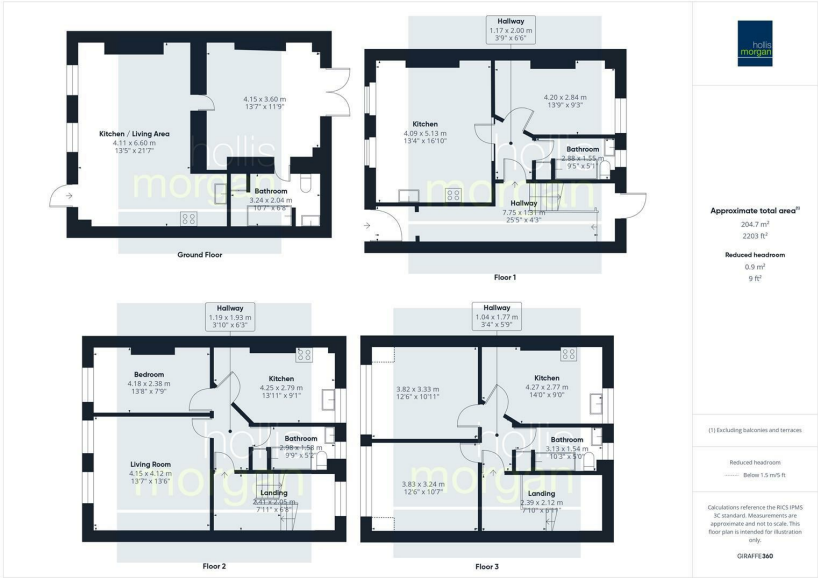
FLAT 4 | 512 Sq Ft

Top Floor | Communal Entrance | Kitchen | Reception | Bedroom | Bathroom

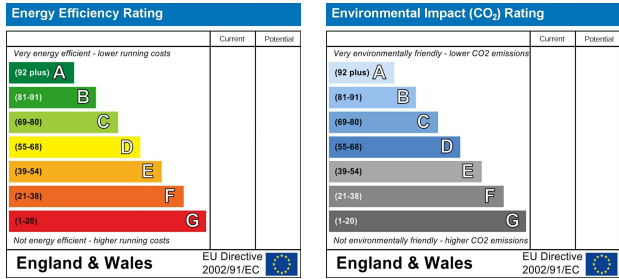
### OUTSIDE

2 x Tandem Parking Spaces | Enclosed Rear Garden

## Floor plan



## EPC Chart



9 Waterloo Street

Clifton

Bristol

BS8 4BT

Tel: 0117 973 6565

Email: post@hollismorgan.co.uk

www.hollismorgan.co.uk

Hollis Morgan Property Limited, registered in England, registered 7275716.

Registered address, 5 Upper Belgrave Road, Clifton, Bristol BS8 2XQ

## Auction Property Details Disclaimer

Hollis Morgan endeavour to make our sales details clear, accurate and reliable in line with the Consumer Protection from Unfair Trading Regulations 2008 but they should not be relied on as statements or representations of fact.

Please refer to our website for further details.