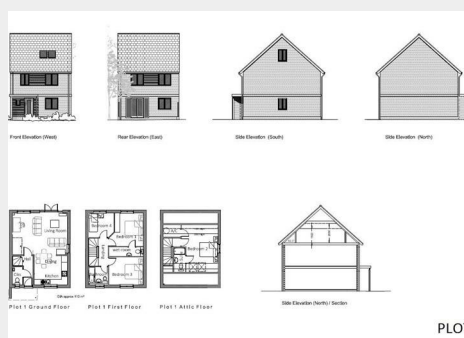
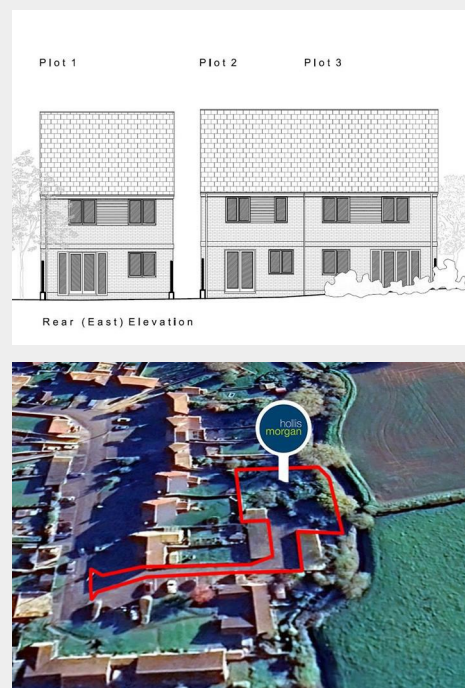
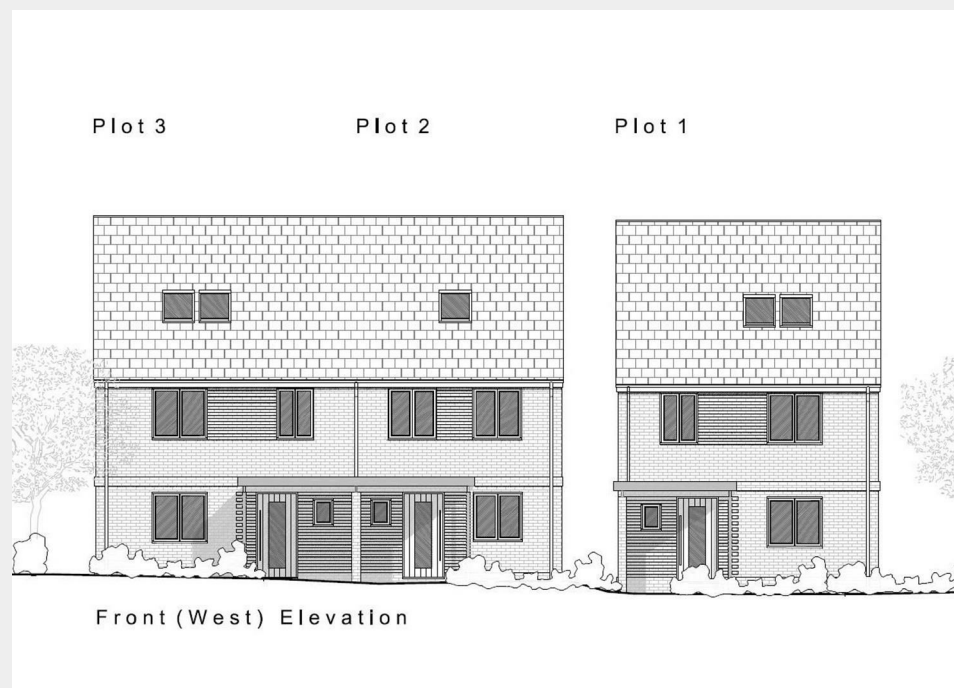


## Site @, Townsend, Marston Magna, Yeovil, BA22 8BP

Auction Guide Price +++ £160,000



- FOR SALE BY ONLINE AUCTION
- WEDNESDAY 18TH JUNE 2025
- VIDEO TOUR NOW ONLINE
- VIEWINGS - REFER TO DETAILS
- DOWNLOAD LEGAL PACK
- JUNE LIVE ONLINE AUCTION
- FREEHOLD DEVELOPMENT SITE
- PLANNING GRANTED
- 2 X SEMI | 1 X DETACHED
- EXTENDED 8 WEEK COMPLETION

Hollis Morgan – JUNE LIVE ONLINE AUCTION - A Freehold DEVELOPMENT SITE with PLANNING GRANTED to erect a scheme of 3 x HOUSES in this popular village location.

# Site @, Townsend, Marston Magna, Yeovil, BA22 8BP

## Accommodation

### FOR SALE BY LIVE ONLINE AUCTION

ADDRESS | Land to Rear of 17 - 18, Townsend, Marston Magna, Yeovil BA22 8BP

Lot Number 25

The Live Online Auction is on Wednesday 18th June 2025 @ 17:30  
Registration Deadline is on Monday 16th June 2025 @ 16:00

The Auction will be streamed LIVE ONLINE via the Hollis Morgan website & you can chose to bid by telephone, proxy or via your computer.  
Registration is a simple online process – please visit the Hollis Morgan auction website and click “REGISTER TO BID”

### THE LAND

A Freehold parcel of land located at the end of Townsend Cul de Sac.  
Sold with vacant possession.

Tenure - Freehold

### THE OPPORTUNITY

DEVELOPMENT SITE | PLANNING GRANTED

Planning has been granted to erect a scheme of 1 detached 4 bedroom house and a pair of 3 bedroom semi detached houses.

### PROPOSED SCHEDULE OF DEVELOPMENT

UNIT 1 | DETACHED

Ground Floor - Entrance Hall | Open Plan Kitchen / Living / Diner | Cloakroom  
First Floor - Bedroom 1 | En Suite | Bedroom 3 | Bedroom 4 | Bathroom  
Top Floor - Bedroom 2 | En Suite  
Outside - Parking | Garden

UNIT 2 | SEMI DETACHED

Ground Floor - Entrance Hall | Open Plan Kitchen / Living / Diner | Cloakroom  
First Floor - Bedroom 1 | Bedroom 2 | Bathroom  
Top Floor - Bedroom 3  
Outside - Parking | Garden

UNIT 3 | SEMI DETACHED

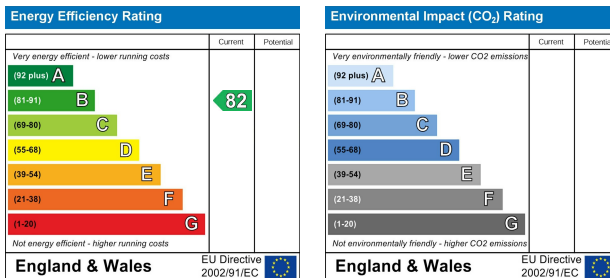
Ground Floor - Entrance Hall | Open Plan Kitchen / Living / Diner | Cloakroom  
First Floor - Bedroom 1 | Bedroom 2 | Bathroom  
Top Floor - Bedroom 3  
Outside - Parking | Garden

## Floor plan



PLOT 1

## EPC Chart



9 Waterloo Street

Clifton

Bristol

BS8 4BT

Tel: 0117 973 6565

Email: [post@hollismorgan.co.uk](mailto:post@hollismorgan.co.uk)

[www.hollismorgan.co.uk](http://www.hollismorgan.co.uk)

Hollis Morgan Property Limited, registered in England, registered 7275716.

Registered address, 5 Upper Belgrave Road, Clifton, Bristol BS8 2XQ

## Auction Property Details Disclaimer

Hollis Morgan endeavour to make our sales details clear, accurate and reliable in line with the Consumer Protection from Unfair Trading Regulations 2008 but they should not be relied on as statements or representations of fact.

Please refer to our website for further details.