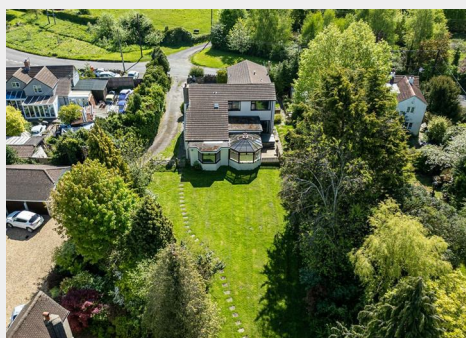


Orchard Hill Cuttsheath Road, Milbury Heath, Near

Auction Guide Price +++ £675,000



- FOR SALE BY ONLINE AUCTION
- WEDNESDAY 23RD JULY 2025
- VIDEO TOUR NOW ONLINE
- VIEWINGS – REFER TO DETAILS
- DOWNLOAD FREE LEGAL PACK
- JULY LIVE ONLINE AUCTION
- DETACHED FAMILY HOME
- ELEVATED VIEWS | 1.36 ACRE PLOT
- UPDATING | REDUCED - WAS £925K
- EXTENDED 8 WEEK COMPLETION

Hollis Morgan – JULY LIVE ONLINE AUCTION – A Freehold DETACHED FAMILY HOME (2859 Sq Ft) with scope for BASIC UPDATING occupying an ELEVATED and MATURE 1.36 Acre Plot | Reduced - was £925k

Orchard Hill Cuttsheath Road, Milbury Heath, Near Thornbury, South Gloucestershire, GL12 8QL

Accommodation

FOR SALE BY LIVE ONLINE AUCTION

ADDRESS | Orchard Hill, Cuttsheath Road, Milbury Heath, South Gloucestershire GL12 8QL

Lot Number 48

The Live Online Auction is on Wednesday 23rd July 2025 @ 17:30
Registration Deadline is on Monday 21st July 2025 @ 16:00

The Auction will be streamed LIVE ONLINE via the Hollis Morgan website & you can chose to bid by telephone, proxy or via your computer.
Registration is a simple online process – please visit the Hollis Morgan auction website and click “REGISTER TO BID”

THE PROPERTY

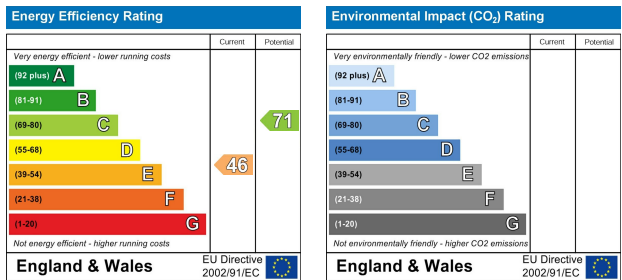
Orchard Hill is a substantial detached family home occupying an elevated position with stunning views over the Severn Vale to the West and the Malvern Hills to the North. The flexible accommodation (2859 Sq Ft) with 6 bedrooms and 4 bathrooms (2 en suite) is arranged over two floors including a self contained studio annexe and integral double garage with utility room. The property occupies a mature 1.36 Acre plot with vehicular access from Cuttsheath Road (includes ownership of the driveway to the adjoining property) the grounds include a large greenhouse, various sheds and a detached log cabin previously used as an office / annexe. Sold with vacant possession.

Tenure - Freehold
Council Tax - Band F
EPC - E

Floor plan



EPC Chart



9 Waterloo Street
Clifton
Bristol
BS8 4BT

Tel: 0117 973 6565

Email: post@hollismorgan.co.uk

www.hollismorgan.co.uk

Hollis Morgan Property Limited, registered in England, registered 7275716.
Registered address, 5 Upper Belgrave Road, Clifton, Bristol BS8 2XQ

Auction Property Details Disclaimer

Hollis Morgan endeavour to make our sales details clear, accurate and reliable in line with the Consumer Protection from Unfair Trading Regulations 2008 but they should not be relied on as statements or representations of fact.

Please refer to our website for further details.