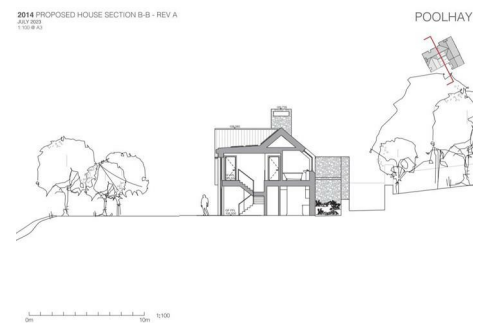




0117 973 6565
 www.hollismorgan.co.uk
 post@hollismorgan.co.uk

hollis
 morgan
 auction



Poolhay, 7 Woodstock Lane, Avening, Tetbury, GL8 8NG

Auction Guide Price £675,000 +++

Hollis Morgan – JULY LIVE ONLINE AUCTION - An exceptional BUILDING PLOT with PLANNING GRANTED for a DETACHED 5 BED FAMILY HOME (2,585 Sq Ft) on a 1.4 ACRE site with STUNNING RURAL VIEWS.

Poolhay, 7 Woodstock Lane, Avening, Tetbury, GL8 8NG

FOR SALE BY LIVE ONLINE AUCTION

ADDRESS | Building Plot @ 7 Woodstock Lane, Avening, Tetbury, Gloucestershire GL8 8NG

Lot Number TBC

The Live Online Auction is on Wednesday 24th July 2024 @ 17:30

Registration Deadline is on Monday 22nd July 2024 @ 16:00

The Auction will be streamed LIVE ONLINE via the Hollis Morgan website & you can chose to bid by telephone, proxy or via your computer.

Registration is a simple online process – please visit the Hollis Morgan auction website and click “REGISTER TO BID”

THE PROPERTY

A Freehold building plot (1.4 Acres) situated along a quiet no through lane in the pretty and sought after village of Avening.

There is an existing dwelling and workshop on site which occupies an elevated position with a delightful outlook over its own gardens and paddock with idyllic views across a small valley towards the village church. The gardens (1.4 Acres) are arranged mostly to lawn enjoying an elevated position overlooking the valley. The driveway continues down into the paddock through a five-bar gate. The paddock features a pretty brook meandering through the valley.

Sold with vacant possession.

Tenure - Freehold

Council Tax - E

EPC - G

Utilities, Rights & Restrictions - Please refer to the Legal Pack

Flood Risk - Please refer to the Legal Pack

THE OPPORTUNITY

NEW BUILD DETACHED HOME

Planning has been granted to erect a stunning detached 5 bedroom family home (2,585 Sq Ft) with local agents estimating the resale value of circa £1.35m - £1.5m

The house was designed by award-winning architect Richard Hawkes who has been featured on Grand Designs.

The construction was planned to follow passive house principles, with a very low u-factor.

The design was conceived with sensory needs in mind, maximising light, openness and flow between main living areas.

From the street side at the Northwest elevation the front

of the house looks discreet and traditional. At the South-Southeast the house has a different, more contemporary character, its windows maximise the light and the view to the rear where the house overlooks the valley and stream, which are part of the property.

ACCOMMODATION SCHEDULE (2,585 Sq Ft)

Ground Floor - Entrance Hall | Open Plan Kitchen / Diner | Living Room | Study | WC | Utility

First Floor - Master Bedroom | Dressing Room | En Suite | Bedroom 2 | En Suite | Bedroom 3 | Bedroom 4 | Bedroom 5 / Study | Bathroom

Outside - 1.4 Acres | Parking | Garage | Store

EXISTING DWELLING | MODERNISATION

There is scope to modernise and extend the existing dwelling subject to consents - please contact Hollis Morgan for further details.

PLANNING GRANTED

Reference 23/00352/FUL

Alternative Reference Not Available

Application Received Wed 01 Feb 2023

Application Validated Thu 23 Feb 2023

Address 7 Woodstock Lane Avening Tetbury Gloucestershire GL8 8NG

Proposal Demolition and replacement of existing dwelling and outbuildings and associated landscaping and works

Status Decided

Decision Application Permit

Decision Issued Date Thu 21 Dec 2023

Appeal Status Unknown

Appeal Decision Not Available

PLANNING INFORMATION

Full details of the proposed scheme and drawings can be downloaded with the online legal pack.

LOCATION

Avening is a delightful Cotswold village nestling across the Nailsworth Valley and has a public houses, a village hall, an excellent primary school and parish Church. Avening is set amongst beautiful unspoilt countryside, close to Minchinhampton Common and Gatcombe Park, the home of The Princess Royal and Gatcombe Horse Trials. Avening is conveniently located between Tetbury and Nailsworth, both of which have an excellent range of facilities including shops, public houses and primary schools with a secondary school at Tetbury. There is an excellent choice of both public and private schools within the area including Beaudesert Park near Minchinhampton. Also within the local area are a number of places of interest including the world famous

Westonbirt Arboretum with some 18 thousand trees and shrubs in approximately 600 acres of landscaped grounds, and over 600 acres of National Trust common land at Minchinhampton.

SOLICITORS

Stephen Parker
Barcan+Kirby
t: 0117 2530397
S.Parker@barcankirby.co.uk
<https://barcankirby.co.uk/>

EXTENDED COMPLETION

Completion is set for 8 weeks or earlier subject to mutual consent.

IMPORTANT AUCTION INFORMATION

VIEWINGS

The plot is open for inspection during daylight hours - please contact Hollis Morgan for further details

ONLINE LEGAL PACKS

Digital Copies of the Online legal pack can be downloaded Free of Charge.

Please visit the Hollis Morgan Website and select the chosen lot from our Current Auction List.

Press the GREEN button to "Download Legal Packs" For the first visit you will be required to register simply with your email and a password.

Having set up your account you can download legal packs or if they are not yet available, they will automatically be sent to you when we receive them.

You will be automatically updated by email if any new information is added.

There will be a note added to the list to confirm AUCTION PACK NOW COMPLETE when no further information is due to be added.

*** STAY UPDATED *** By registering for the legal pack we can ensure you are kept updated on any changes to this Lot in the build up to the sale.

BUYER'S PREMIUM

Please be aware all purchasers are subject to a £1000 + VAT (£1,200 inc VAT) buyer's premium which is ALWAYS payable upon exchange of contracts whether the sale is concluded before, during or after the auction date.

GUIDE PRICE

An indication of the seller's current minimum acceptable price at auction. The guide price or range of guide prices is given to assist consumers in deciding whether to

pursue a purchase. It is usual, but not always the case, that a provisional reserve range is agreed between the seller and the auctioneer at the start of marketing. As the reserve is not fixed at this stage and can be adjusted by the seller at any time up to the day of the auction in the light of interest shown during the marketing period, a guide price is issued. This guide price can be shown in the form of a minimum and maximum price range within which an acceptable sale price (reserve) would fall, or as a single price figure within 10% of which the minimum acceptable price (reserve) would fall. A guide price is different to a reserve price (see separate definition). Both the guide price and the reserve price can be subject to change up to and including the day of the auction.

RESERVE PRICE

The seller's minimum acceptable price at auction and the figure below which the auctioneer cannot sell. The reserve price is not disclosed and remains confidential between the seller and the auctioneer. Both the guide price and the reserve price can be subject to change up to and including the day of the auction.

PRE AUCTION OFFERS

Some vendors are willing to consider offers prior to the auction.

Pre auction offers can ONLY be submitted by completing the online PRE AUCTION OFFER FORM

The form can be found on the Hollis Morgan website on the individual auction property listing.

Please note offers will not be considered until you have inspected the COMPLETE LEGAL PACK once it has been released.

There will be a note added to the list to confirm AUCTION PACK NOW COMPLETE when our client's solicitor informs us no further information is due to be added.

In the event of an offer being accepted the property will only be removed from the online auction and viewings stopped once contracts have successfully EXCHANGED subject to the standard auction terms and payment of the buyer's premium (£1000 + VAT) to Hollis Morgan.

Contracts can be exchanged via the solicitors or at the Hollis Morgan offices by appointment only.

REGISTRATION PROCESS

The registration process is extremely simple – visit the Hollis Morgan auction website and click on the "Register to Bid" button.

The "Register to Bid" button can be found on the auction

home page or on the individual lot listings.
Please note this function is not available on Rightmove or Zoopla.

Stage 1 – Complete the Online Bidding Form
Stage 2 – Upload your certified ID
Stage 3 – Invitation to bid
Stage 4 – Pay your security deposit (£6,200)

You are now ready to bid – Good luck!

If your bid is successful, the balance of the deposit monies must be transferred to our client account within 24 hours of the auction sale.

If you are unsuccessful at the auction your holding deposit will be returned within 48 hours.

SURVEYS AND VALUATIONS

If you would like to arrange a survey or mortgage valuation of this Lot BEFORE the auction, please instruct your appointed surveyor to contact Hollis Morgan and we will arrange access for them to inspect the property. Please note that buyers CANNOT attend the surveys and the surveyors are responsible for collecting and returning keys to the Hollis Morgan offices in Clifton.

AUCTION FINANCE & BRIDGING LOANS

Some properties may require specialist auction finance- please contact Hollis Morgan for access to expert advice and whole of market rates from our independent brokers.

Hollis Morgan may receive introductory fees for this service from the broker.

AUCTION BUYER'S GUIDE VIDEO

We have short video guides for both buying and selling by Public Auction on the Hollis Morgan Website. If you have any further questions regarding the process, please don't hesitate to contact Auction HQ.

2024 CHARITY OF THE YEAR

Hollis Morgan is supporting The Malcolm Gunter Foundation as our 2024 Charity of the year with a % of each Buyers premium being donated.

In 2018 Malcolm Gunter passed away from Motor Neurone Disease - In his memory, MGF has raised over £200,000 and provided support and grants for many local people living with and affected by MND.

100% of all monies raised will be utilised in supporting sufferers of MND with their physical and emotional

needs, and research into the disease .

Visit the Hollis Morgan Charity Page of our website for further details

TESTIMONIALS

We are very proud of what our past clients have say about us - please visit the Hollis Morgan website to read their testimonials.

I WANT TO SELL BY AUCTION

Since 2010 Hollis Morgan have been the most successful land and property auctioneers across the Region. Famous for large public sales our reputation was built on transparent, competitive bidding leading to some memorable results. As a reaction to covid we have moved to a monthly live online platform which has proved to be a huge success. Our core service has all the benefits of a traditional auction but now, via a fully interactive online saleroom with options to bid by telephone, proxy or online we can now reach a national and international audience - the feedback from our clients is hugely positive and we are now committed to this 21st century method of selling land and property.

In 2022 Hollis Morgan Sold More Lots by auction in Bristol, North Somerset, Bath & Gloucester than any other Auctioneer!

In 2022 over £65m of land and property was successfully sold under the hammer by Hollis Morgan. Since 2010 Hollis Morgan have Sold More Lots by auction than any other local firm!

Bristol's most experienced auctioneer Andrew Morgan MBE – with forty years' experience on the rostrum.

Auction specific premium adverts on both the UK's biggest property portals Rightmove & Zoopla.

Digital Mailing list of over 40,000 Local, National, Regional and International Developers, Investors and family buyers.

Over 100 years combined property experience operating from our Regional HQ based in Clifton covering Bristol and the West Country.

Innovative yet simple marketing techniques such as virtual tours, drone shots, video tours, hi vis signage and professional photos.

Active and coordinated social media presence on Instagram, twitter, LinkedIn and Google.

WHY LIVE ONLINE AUCTION?

- Fixed Timescales & Speed - Exchange on the day with a quick & fixed completion of 4, 6 or 8 weeks.
- Closure & Control - 10% non refundable deposit taken

upon exchange and the deal is done unlike a traditional sale.

- High Profile Sale – Intensive 4-6 week marketing campaign to make your lot visible and available to all potential buyers.
- Guaranteed Price - you set a minimum reserve which protects you from selling for any less than you want.
- Transparency & Competitive Bidding - Auction provides a transparency of sale ensuring your lot is sold to the person willing to pay the most on the day.

For loads more reasons to instruct Hollis Morgan and the statistics to back it up please visit our selling by auction section of the Hollis Morgan website.

AUCTION PROPERTY DETAILS DISCLAIMER

Hollis Morgan endeavour to make our sales details clear, accurate and reliable in line with the Consumer Protection from Unfair Trading Regulations 2008 but they should not be relied on as statements or representations of fact, and they do not constitute any part of an offer or contract. All Hollis Morgan references to planning, tenants, boundaries, potential development, tenure etc is to be superseded by the information contained in the legal pack. It should not be assumed that this property has all the necessary Planning, Building Regulation, or other consents. Any services, appliances and heating system(s) listed have not been checked or tested. Please note that in some instances the photographs may have been taken using a wide-angle lens. The seller does not make any representation or give any warranty in relation to the property, and we have no authority to do so on behalf of the seller.