

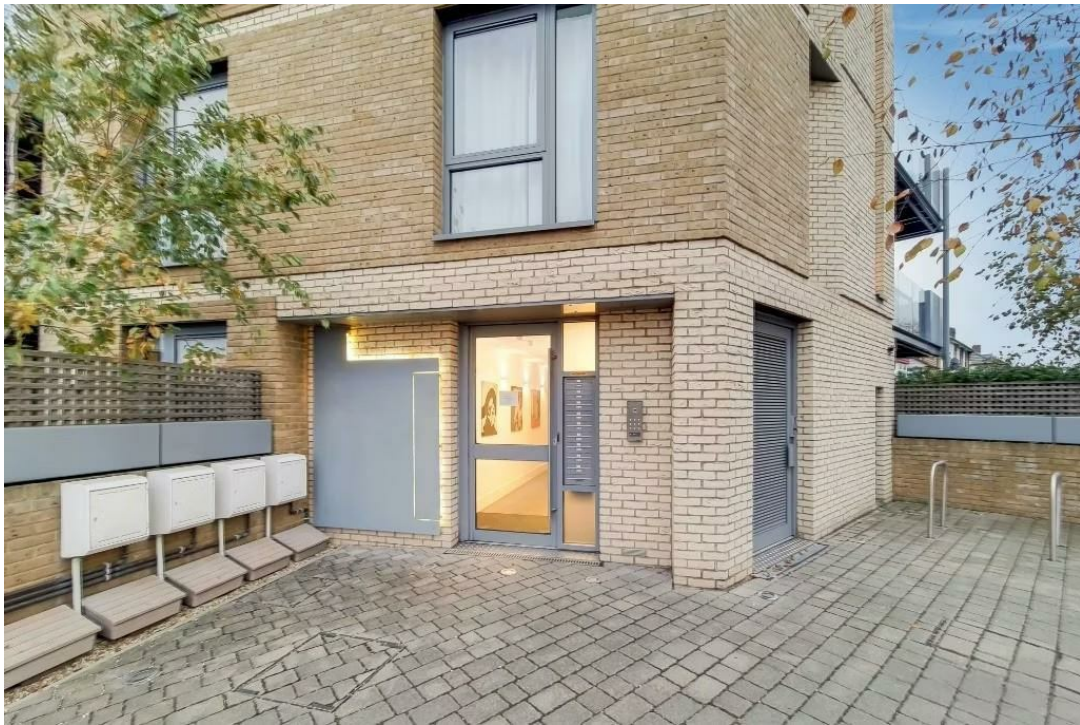


Gipsy Road, SE27 | £450,000

02087029888

westnorwood@pedderproperty.com

pedder
We live local



In General

- Two double bedrooms
- Chain free
- West facing private balcony
- Great location
- Excellent condition
- Light & bright
- Ample storage

In Detail

A sleek and contemporary two-bedroom apartment ideally situated on Gipsy Road, SE27. This stylish home offers well-considered living space with high-quality finishes throughout.

The apartment features a bright open-plan kitchen and living area, finished with engineered wood flooring and designed to maximise both comfort and functionality. The modern fitted kitchen includes integrated appliances and a striking breakfast bar, creating an ideal setting for everyday living and entertaining. The living space flows seamlessly onto a generous private west-facing balcony, perfect for enjoying afternoon and evening sunshine.

Both bedrooms are spacious doubles and benefit from built-in storage, offering excellent practicality. The accommodation is completed by a luxurious, fully tiled bathroom enhanced with contemporary fittings and ambient LED lighting.

Additional benefits include a secure entry phone system, underfloor heating with individual room controls, and access to a private, secure rear courtyard with dedicated bicycle storage.

Glendon Apartments is positioned between Gipsy Road and Auckland Hill, ideally located between West Norwood and West Dulwich. Residents are within easy reach of the vibrant High Street, offering a range of shops, cafés, bars, and amenities including the Picturehouse Cinema, library, and health centre. The popular Crystal Palace Triangle is also close by, providing further dining and leisure options.

The property is exceptionally well connected, with excellent transport links from West Norwood rail station providing direct services to London Bridge and London Victoria. Tulse Hill station is also nearby, offering City Thameslink services to London Blackfriars, Farringdon, and London St Pancras.

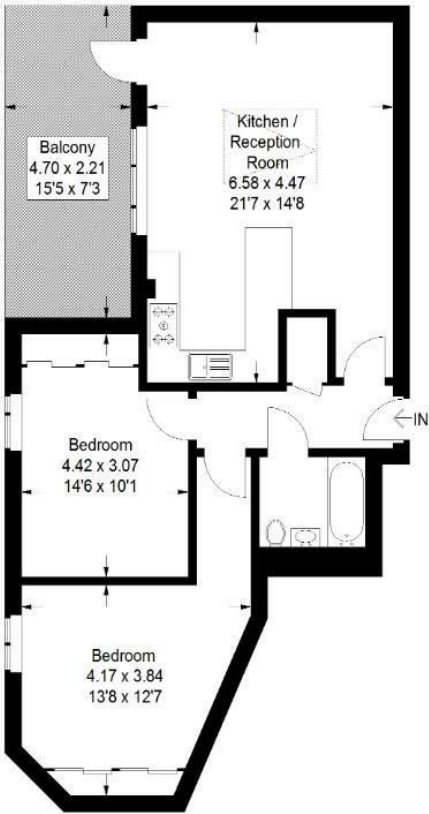
EPC: C | Council Tax Band: C | Lease: 113.5 Years Remaining | SC: £1,205 pa | GR: £250 pa | BI: £1,066 pa



Floorplan

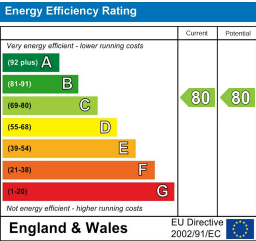
Glendon Apartments, SE27

Approximate Gross Internal Area
68.5 sq m / 737 sq ft



Third Floor

Copyright www.pedderproperty.com © 2026
These plans are for representation purposes only as defined by RICS - Code of Measuring Practice. Not drawn to Scale. Windows and door openings are approximate. Please check all dimensions, shapes and compass bearings before making any decisions reliant upon them.



Pedder Property Ltd trading as Pedder for themselves and for the vendor/landlord of this property whose agents they are, give notice that (1) these particulars do not constitute any part of an offer or contract, (2) all statements contained within these particulars are made without responsibility on the part of Pedder or the vendor/landlord, (3) whilst made in good faith, none of the statements contained within these particulars are to be relied upon as a statement of representation or fact, (4) any intending purchaser/tenant must satisfy him/herself by inspection or otherwise as to the correctness of each of the statements contained within these particulars, (5) the vendor/landlord does not make or give either Pedder or any person in their employment any authority to make or give representation or warranty whatsoever in relation to this property.