



Streatham High Road, SW16 | Guide Price £400,000

02087029888

westnorwood@pedderproperty.com

pedder
We live local



In General

- Two bedrooms
- Large reception room
- Over 900 sq ft
- Chain free
- Great location
- Good transport links

In Detail

Guide Price: ** £400,000 - £425,000 ** A spacious two-bedroom apartment set within The High, a 1930s Art Deco mansion block that beautifully retains its original character, including mosaic flooring and iconic period signage.

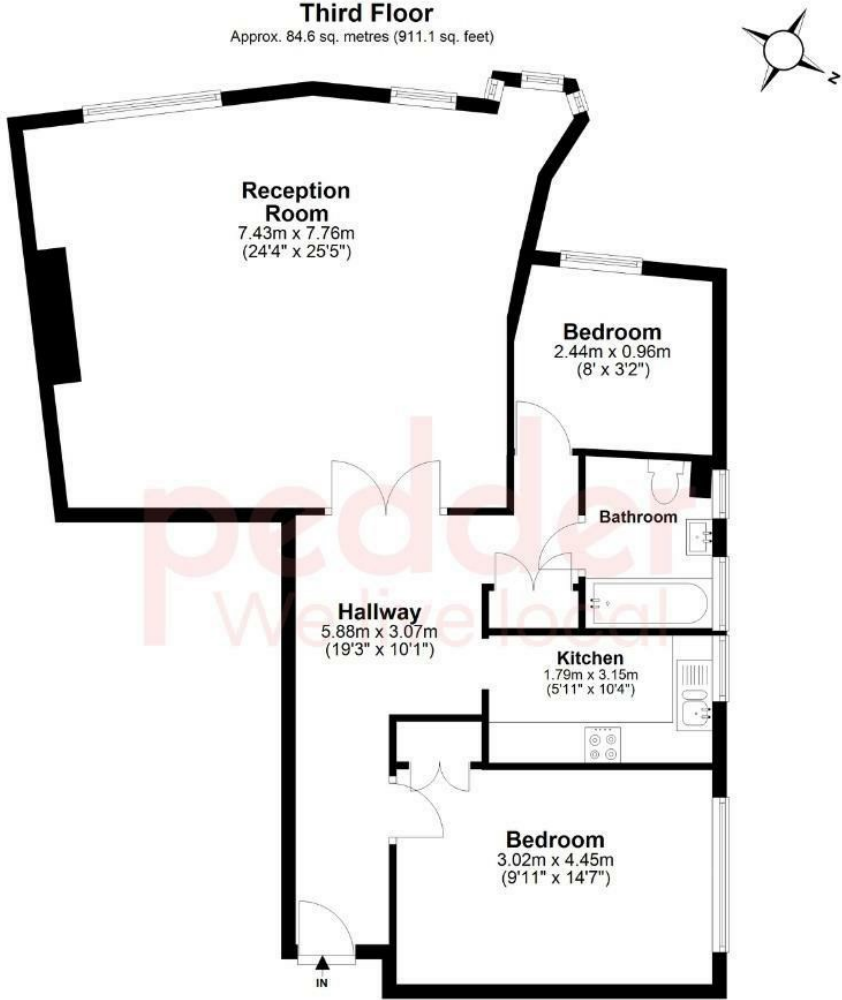
Measuring over 900 sq ft, the property features a bright and generously sized reception room, enhanced by an original fireplace that adds to its natural charm. Double doors open into a wide hallway offering versatile space for freestanding furniture. The well-kept galley kitchen is also filled with natural light. The large primary bedroom includes built-in storage, while the second bedroom is ideal as a guest room or home office. A neatly presented three-piece bathroom completes the accommodation.

Ideally located just a short walk from Streatham Hill Station, the apartment provides excellent transport links across London. Nearby green spaces include Tooting Bec Common and Streatham Common, both only minutes away. Bus routes offer quick access to Brixton for the Victoria Line, while Balham and the Northern Line are within walking distance. The surrounding area benefits from a wide selection of bars, restaurants, shops, and other local amenities.

EPC: C | Council Tax Band: C | Lease: 110 years remaining | SC: £3,274.88 pa | GR: 80 pa | BI: Included in SC



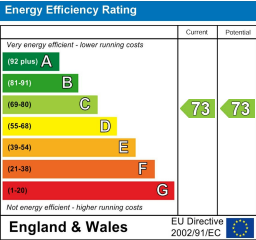
Floorplan



Total area: approx. 84.6 sq. metres (911.1 sq. feet)

Copyright www.pedderproperty.com 2024. These plans are for representation purposes only as Defined by RICS - Code of Measuring Practice. Not drawn to scale. windows and door measurements are approximate. please check dimensions, shapes and compass bearings before making any decisions reliant upon them.

Plan produced using PlanUp.



Pedder Property Ltd trading as Pedder for themselves and for the vendor/landlord of this property whose agents they are, give notice that (1) these particulars do not constitute any part of an offer or contract, (2) all statements contained within these particulars are made without responsibility on the part of Pedder or the vendor/landlord, (3) whilst made in good faith, none of the statements contained within these particulars are to be relied upon as a statement of representation or fact, (4) any intending purchaser/tenant must satisfy him/herself by inspection or otherwise as to the correctness of each of the statements contained within these particulars, (5) the vendor/landlord does not make or give either Pedder or any person in their employment any authority to make or give representation or warranty whatsoever in relation to this property.