



Dassett Road, SE27 | £750,000

02087029888

[westnorwood@pedderproperty.com](mailto:westnorwood@pedderproperty.com)

**pedder**  
We live local







# In General

- Three double bedrooms
- Two bathrooms
- Extended loft conversion
- Period features
- Private rear garden
- Excellent transport links
- Quiet residential street

# In Detail

A stunning three-bedroom family home on Dasset Road, SE27 now available to purchase.

Offered to the market in good decorative order, this beautifully presented three-bedroom, two-bathroom period home effortlessly blends classic charm with modern convenience. Extended into the loft, the property provides generous living space over three floors, ideal for growing families or those looking for a spacious, ready-to-move-into home in a thriving South London community.

The ground floor boasts a welcoming reception room equipped with original period features. To the rear, a contemporary kitchen-diner opens onto a well-maintained private garden.

Upstairs, the first floor offers two well-proportioned double bedrooms, a stylish family bathroom, and plenty of built-in storage. The loft conversion creates a stunning principal suite with en-suite shower room, elevated views, and a calm, light-filled atmosphere.

The centre of West Norwood offers an array of independent cafés, popular pubs, restaurants, and local shops. The area is home to the West Norwood Picturehouse & Library, a cultural hub that adds to the strong community feel.

West Norwood Station (Zone 3) is located nearby, providing regular services into London Bridge and London Victoria, making this an ideal location for commuters. Nearby Tulse Hill and Gipsy Hill stations also offer additional transport options.

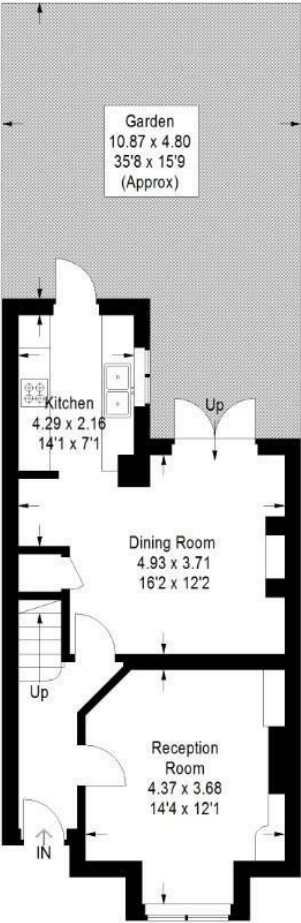
EPC: TBC | Council Tax Band: E



# Floorplan

Dassett Road, SE27

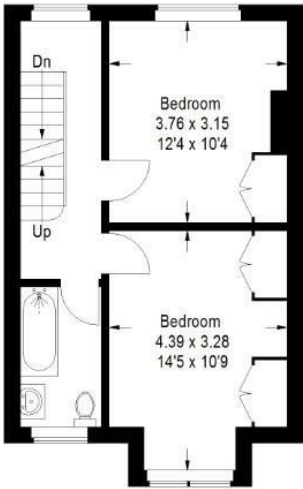
Approximate Gross Internal Area  
(Excluding Eaves)  
107.4 sq m / 1156 sq ft



Ground Floor

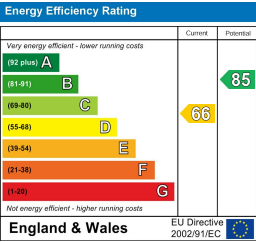


Second Floor



First Floor

Copyright www.pedderproperty.com © 2025  
These plans are for representation purposes only as defined by RICS - Code of Measuring Practice.  
Not drawn to Scale. Windows and door openings are approximate. Please check all dimensions, shapes and compass bearings before making any decisions reliant upon them.



Pedder Property Ltd trading as Pedder for themselves and for the vendor/landlord of this property whose agents they are, give notice that (1) these particulars do not constitute any part of an offer or contract, (2) all statements contained within these particulars are made without responsibility on the part of Pedder or the vendor/landlord, (3) whilst made in good faith, none of the statements contained within these particulars are to be relied upon as a statement of representation or fact, (4) any intending purchaser/tenant must satisfy him/herself by inspection or otherwise as to the correctness of each of the statements contained within these particulars, (5) the vendor/landlord does not make or give either Pedder or any person in their employment any authority to make or give representation or warranty whatsoever in relation to this property.