



Royal Circus, SE27 | £499,950

02087029888

westnorwood@pedderproperty.com

pedder
We live local



In General

- Ground floor maisonette
- Two bedrooms
- Large reception room
- Convenient for local amenities
- Popular location
- Wrap-around private garden

In Detail

A spacious two bedroom maisonette on the popular Royal Circus, SE27, now available to purchase.

The property is on the ground floor of this impressive period house and is tastefully decorated throughout. The accommodation comprises kitchen, separate 17 ft reception room with windows overlooking the large, private, wrap-around garden with a newly installed fence. The kitchen has a modern range of wall and base units with integrated fridge/freezer, built in oven and hob and a freestanding washing machine. The bathroom is newly refurbished with a high end finish maximising the space.

Ideally located for Tulse Hill station and West Norwood station offering excellent access into The City via London Bridge and London Victoria.

This property is conveniently positioned for the fantastic amenities of Norwood Road including the bars, restaurants, shops and library.

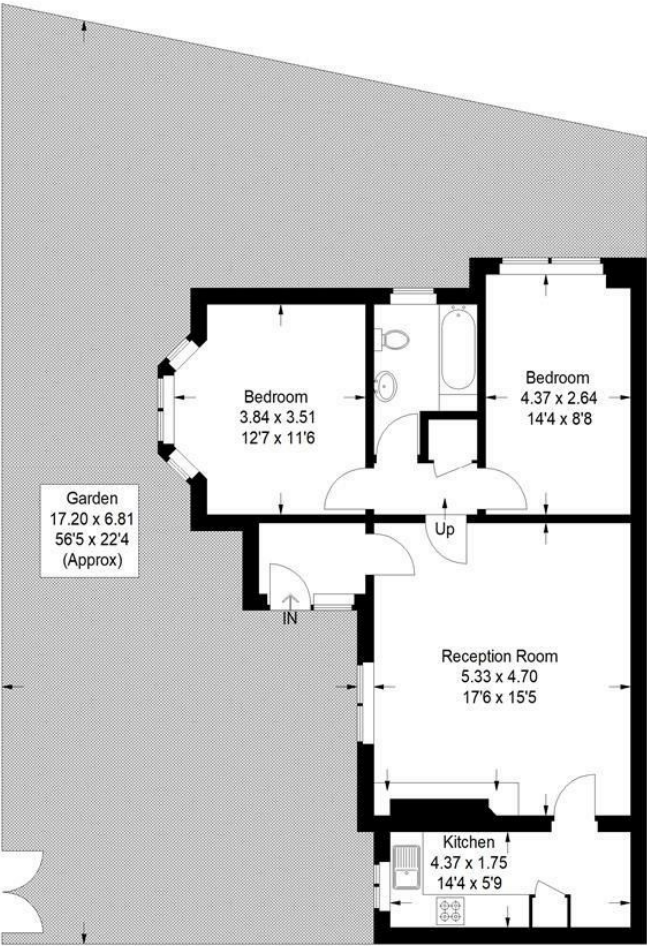
EPC: D | Council Tax Band: C | Lease: 145 Years Remaining | SC: As & when | GR: £0 | BI: TBC



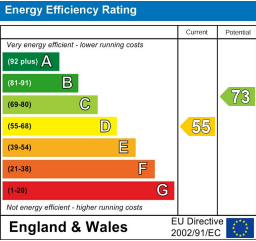
Floorplan

Royal Circus, SE27

Approximate Gross Internal Area
70.6 sq m / 760 sq ft



Copyright www.pedderproperty.com © 2024
These plans are for representation purposes only as defined by RICS - Code of Measuring Practice. Not drawn to Scale. Windows and door openings are approximate. Please check all dimensions, shapes and compass bearings before making any decisions reliant upon them.



Pedder Property Ltd trading as Pedder for themselves and for the vendor/landlord of this property whose agents they are, give notice that (1) these particulars do not constitute any part of an offer or contract, (2) all statements contained within these particulars are made without responsibility on the part of Pedder or the vendor/landlord, (3) whilst made in good faith, none of the statements contained within these particulars are to be relied upon as a statement of representation or fact, (4) any intending purchaser/tenant must satisfy him/herself by inspection or otherwise as to the correctness of each of the statements contained within these particulars, (5) the vendor/landlord does not make or give either Pedder or any person in their employment any authority to make or give representation or warranty whatsoever in relation to this property.