

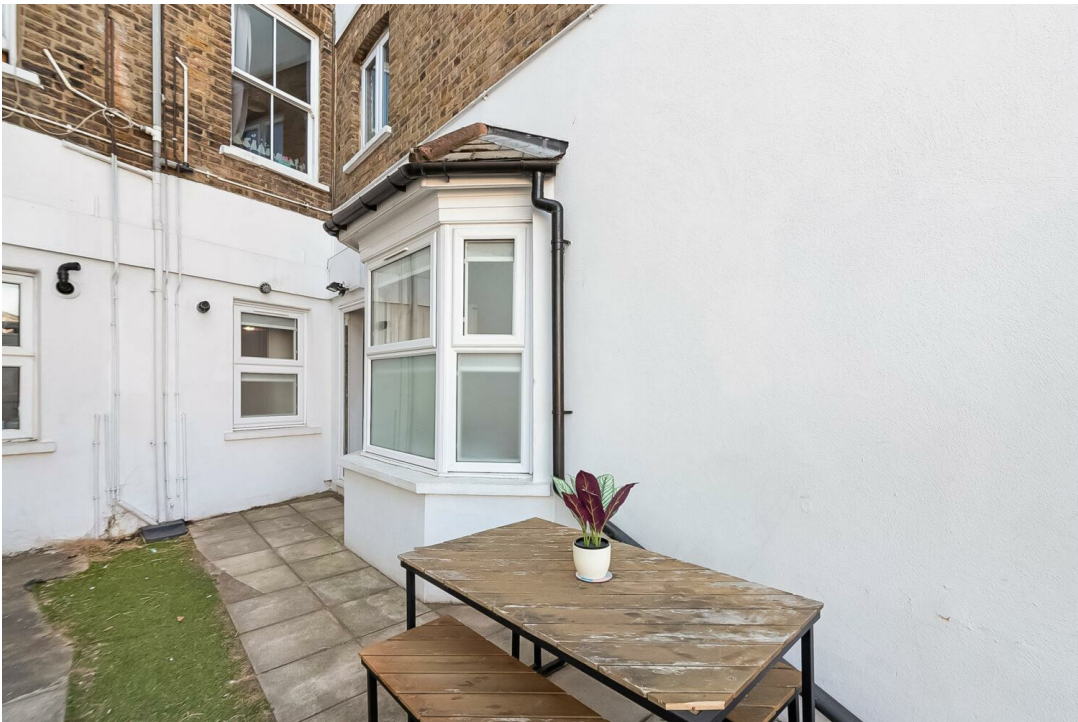


Norwood High Street, SE27 | £375,000

02087029888

westnorwood@pedderproperty.com

pedder
We live local



In General

- Two double bedrooms
- Ground floor flat with private courtyard
- Spacious open-plan living and dining area
- Modern kitchen and bathroom
- Excellent transport links
- West Norwood Station 0.2miles away
- Vibrant high street with cafés, shops & cinema
- Close to parks and local amenities

In Detail

A bright and modern two bedroom ground floor flat on Norwood High Street, West Norwood, now available to purchase.

Ideally situated on Norwood High Street in the heart of West Norwood, is this well-presented two-bedroom ground floor flat offers comfortable modern living with the added benefit of a private patio courtyard.

The property features two well-proportioned double bedrooms, a stylish open-plan living and dining space, a sleek kitchen with integrated appliances, and a modern bathroom finished. Large windows and a smart layout provide an airy and light-filled feel throughout, making it an ideal home for professionals, couples, or small families.

Positioned just 0.2 miles from West Norwood station, the property offers excellent transport links with regular Thameslink and Southern services to London Bridge (approx. 23 mins), London Victoria (approx. 22 mins), and Blackfriars (approx. 26 mins).

There are several bus routes running along Norwood High Street, connecting you easily to nearby Brixton, Crystal Palace, Streatham, and Dulwich.

The location benefits from a fantastic sense of community, with a growing number of independent cafés, restaurants, shops, and the popular West Norwood Picturehouse cinema all within easy reach. The weekly West Norwood Feast market is a local favourite, offering artisan food, crafts, and vintage goods. Green spaces such as Norwood Park and Brockwell Park are also close by for weekend strolls or summer picnics.

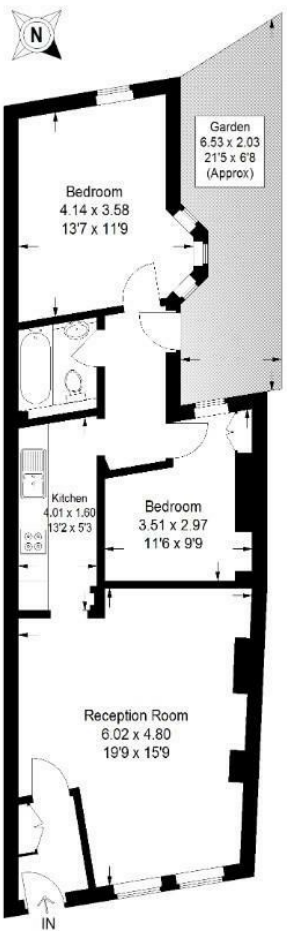
EPC: C | Council Tax Band: C | Lease Remaining: 101 years | SC: £1,000 | GR: £500 | BI: £0



Floorplan

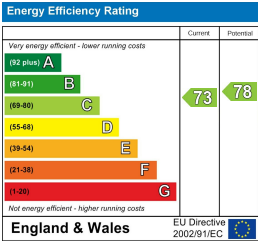
Norwood High Street, SE27

Approximate Gross Internal Area
64.2 sq m / 691 sq ft



Ground Floor

Copyright www.pedderproperty.com © 2025
These plans are for representation purposes only
as defined by RICS - Code of Measuring Practice.
Not drawn to Scale. Windows and door openings
are approximate. Please check all dimensions,
shapes and compass bearings before making
any decisions reliant upon them.



Pedder Property Ltd trading as Pedder for themselves and for the vendor/landlord of this property whose agents they are, give notice that (1) these particulars do not constitute any part of an offer or contract, (2) all statements contained within these particulars are made without responsibility on the part of Pedder or the vendor/landlord, (3) whilst made in good faith, none of the statements contained within these particulars are to be relied upon as a statement of representation or fact, (4) any intending purchaser/tenant must satisfy him/herself by inspection or otherwise as to the correctness of each of the statements contained within these particulars, (5) the vendor/landlord does not make or give either Pedder or any person in their employment any authority to make or give representation or warranty whatsoever in relation to this property.