



Canterbury Grove, SE27
£550,000

0208 702 9888
pedderproperty.com

pedder



In general

- Freehold house
- Three bedrooms
- Close to transport links
- Well maintained
- Neutrally decorated

In detail

A three-bedroom family home located on a peaceful residential street is now available to purchase.

The interior of the house is designed for modern living, featuring an open-plan kitchen dining area with ample storage space and room for a full-sized dining table. A separate lounge at the rear opens onto the secluded garden.

Upstairs, there are two spacious double bedrooms and a third, single bedroom currently in use as a home office/study. The family bathroom is on this floor together with three spacious built-in cupboards. There is also a downstairs WC.

The property is well located offering easy access to public transport, being about five minutes walk from West Norwood station (Victoria, London Bridge), with bus links to Brixton, central and outer London, and approximately fifteen minutes walk from Tulse Hill Station (Thameslink). The Health and Leisure Centre, Picturehouse, library and a wide variety of local food shops, coffee shops, restaurants and pubs are also a just a short walk away.

Early viewing is strongly recommended.

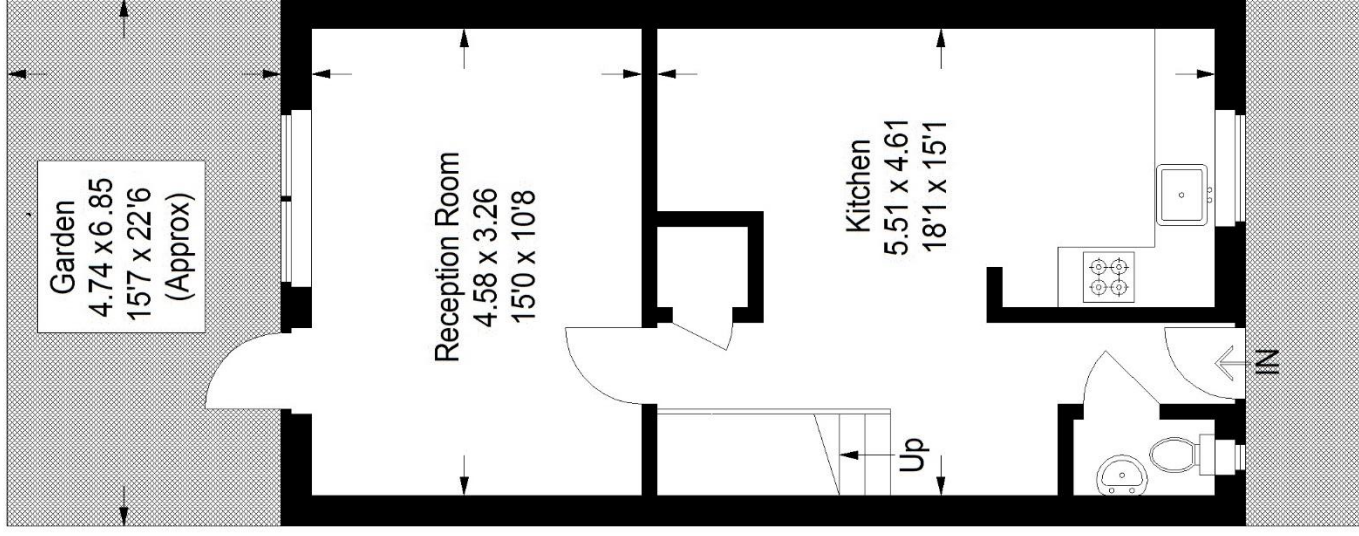
EPC: C | Council Tax Band: E



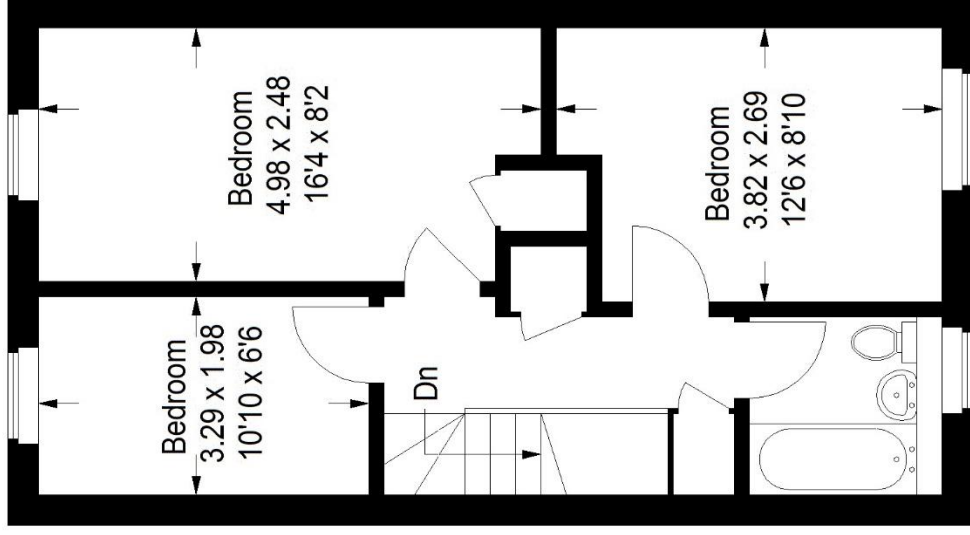
Floorplan

Wooden Bridge Terrace, SE27

Approximate Gross Internal Area
82.2 sq m / 885 sq ft



Ground Floor



First Floor

Copyright www.pedderproperty.com © 2024

These plans are for representation purposes only as defined by RICS - Code of Measuring Practice. Not drawn to Scale. Windows and door openings are approximate. Please check all dimensions, shapes and compass bearings before making any decisions reliant upon them.

Score	Energy rating	Current	Potential
92+	A		
81-91	B		
69-80	C		
55-68	D		
39-54	E		
21-38	F		
1-20	G		
		77 C	90 B

Pedder Property Ltd trading as Pedder for themselves and for the vendor/landlord of this property whose agents they are, give notice that (1) these particulars do not constitute any part of an offer or contract, (2) all statements contained within these particulars are made without responsibility on the part of Pedder or the vendor/landlord, (3) whilst made in good faith, none of the statements contained within these particulars are to be relied upon as a statement of representation or fact, (4) any intending purchaser/tenant must satisfy him/herself by inspection or otherwise as to the correctness of each of the statements contained within these particulars, (5) the vendor/landlord does not make or give either Pedder or any person in their employment any authority to make or give representation or warranty whatsoever in relation to this property.