



Rochdale Road, Greetland, HX4 8HE
Prices From £650,000


E&H Edkins Holmes
ESTATE AGENTS

An exclusive development of five, architect designed, stone built detached houses in the highly sought after Greetland area. Ranging in size from five to six bedrooms with each property having spacious living/ dining kitchens plus further reception rooms, a minimum of two en-suites and the study, utility and cloak facilities you would expect from a property of this standard. The properties all benefit from underfloor heating to the ground floor, high specification kitchen and bathrooms providing residents with a spacious, modern family home.


Please call the office to register your interest

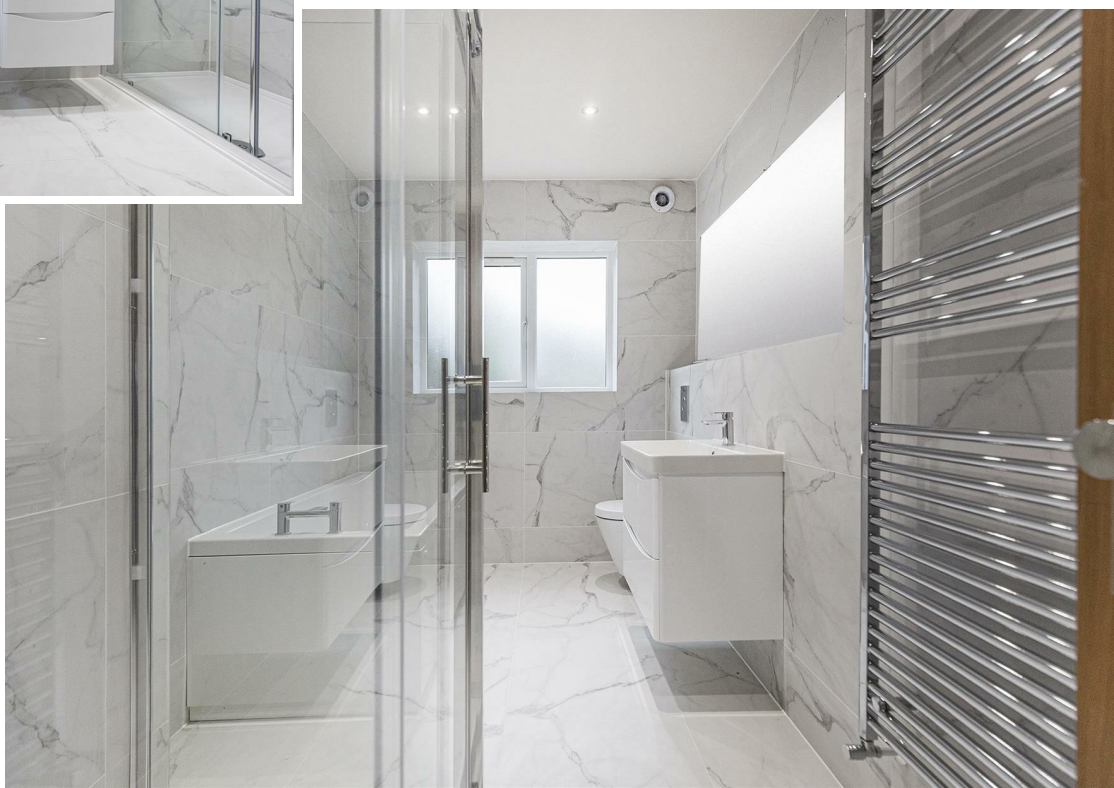


Energy Efficiency Rating

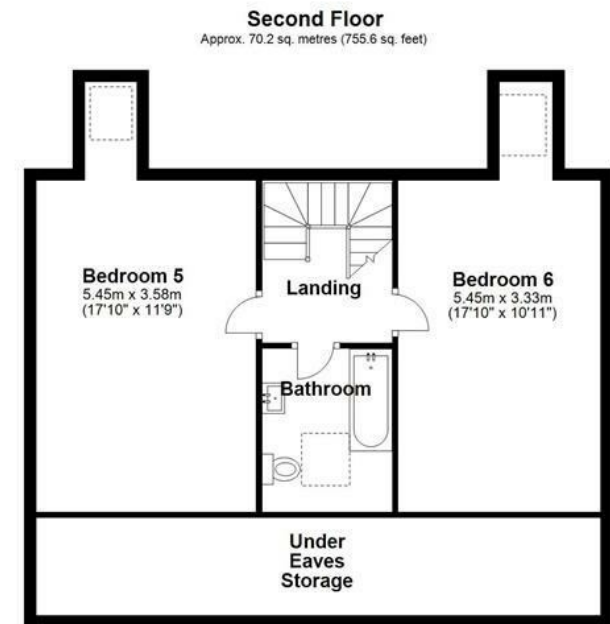
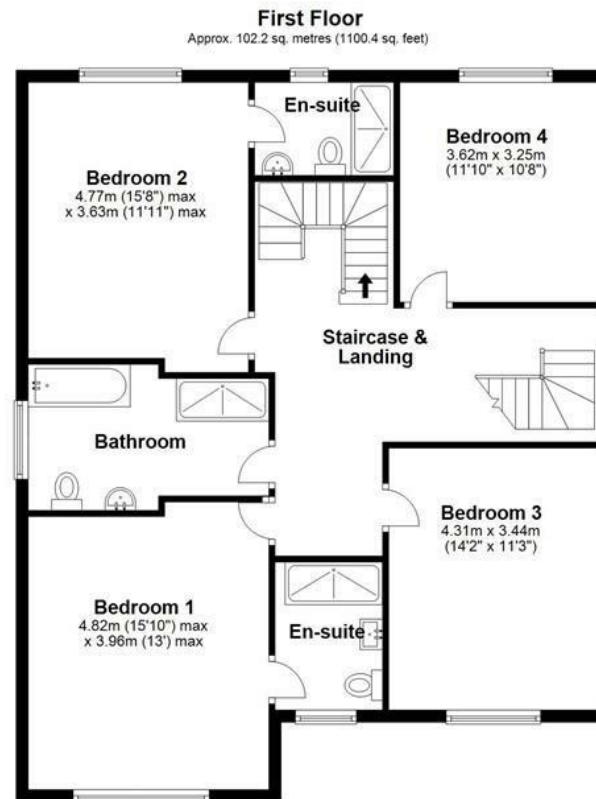
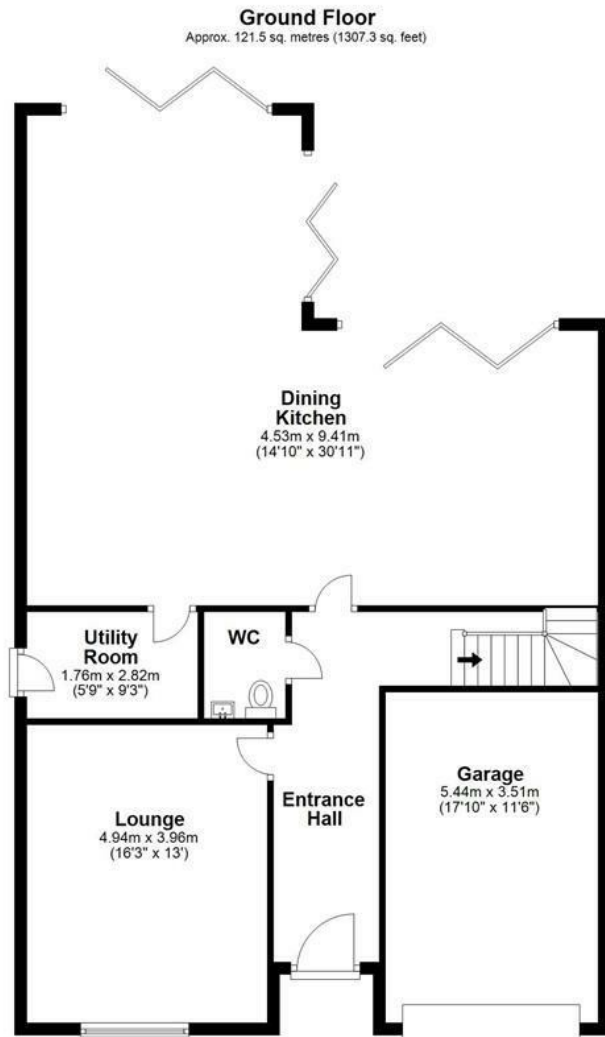
	Current	Potential
Very energy efficient - lower running costs		
(92 plus) A		
(81-91) B		
(69-80) C		
(55-68) D		
(39-54) E		
(21-38) F		
(1-20) G		
Not energy efficient - higher running costs		
England & Wales	EU Directive 2002/91/EC	

Environmental Impact (CO₂) Rating

	Current	Potential
Very environmentally friendly - lower CO ₂ emissions		
(92 plus) A		
(81-91) B		
(69-80) C		
(55-68) D		
(39-54) E		
(21-38) F		
(1-20) G		
Not environmentally friendly - higher CO ₂ emissions		
England & Wales	EU Directive 2002/91/EC	







Total area: approx. 293.9 sq. metres (3163.3 sq. feet)

This floor plan is intended to give a general indication of the proposed floor layout only. Dimensions should not be used for carpets, flooring, appliance spaces or items of furniture fixed or free standing.
Plan produced using PlanUp.