

Noble Court , Mill Street, Slough, Berkshire, SL2 5DP

£250,000
Leasehold

b simmons

T: 01753 545 555 bsimmons.co.uk



Well presented and offered with no onward chain, B Simmons welcomes to the market this first floor purpose built apartment within close proximity of Slough railway / Elizabeth line station. The property is well presented and offers contemporary living with accommodation comprising; an entrance hallway with adjoining doors to a spacious lounge with a Juliet balcony, two double bedrooms, a separate modern fitted kitchen, family bathroom and en-suite to the master bedroom. There is a secure gated car park for residents and a well maintained communal area.

The property is situated in a prime location just a few minutes' walk from Slough railway / Elizabeth line station, local bus routes, the town centre with its plethora of local shops, superstores and Slough library.

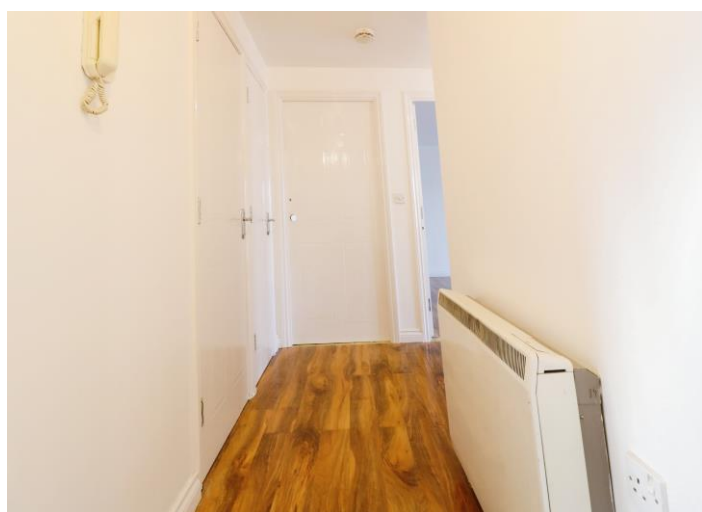
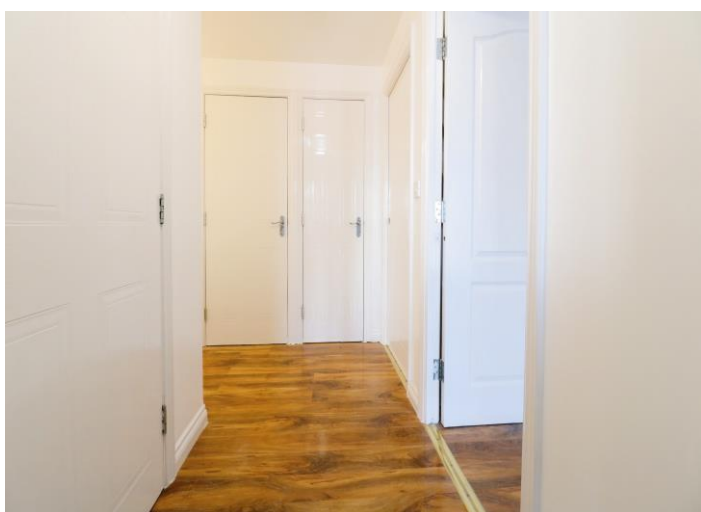
Property Information: Lease Remaining: Approx. 133 Years
Ground Rent: Approx. £175.00 PA
Maintenance Charges: Approx. £1415.16 PA
Council Tax Band: C / EPC Rating: C
(all to be verified by a solicitor)

Noble Court , Mill Street, Slough, Berkshire, SL2 5DP



Please contact the office to arrange a **FREE** property valuation on **01753 545555**

Noble Court , Mill Street, Slough, Berkshire, SL2 5DP



Please contact the office to arrange a **FREE** property valuation on **01753 545555**

