



22 Thornthwaite Road, Windermere
£300,000



22 Thornthwaite Road

Windermere, Windermere

Nestled in a sought-after location in the Heathwaite area of Windermere convenient for access to Queen's Park and the amenities of Windermere and Bowness, and to the Lakeland fells. This completely updated three-bedroom mid-terraced house presents a fantastic opportunity for a range of purchasers. The property boasts a welcoming and cosy sitting room, complete with a charming multi-fuel Morso stove featuring a wood lintel, perfect for those chilly nights. The dining room offers a spacious area with a feature fireplace alcove and ample room for a sofa, creating a perfect space for entertaining guests or to read a book in the airy room, whilst taking advantage of the sunshine from the south facing rear patio area. The modern fitted kitchen comes equipped with the essential built-in appliances plus a spacious pantry area for groceries and space for additional appliances. Upstairs, the property comprises three bedrooms, with two being generously proportioned double bedrooms providing comfortable sleeping spaces off a spacious landing with access to a loft area which could be readily developed into a fourth bedroom. The stylish four-piece bathroom includes an Aqualisa shower over the bath. Situated close to Windermere's town centre, with a variety of shops, pubs, restaurants, schools, the lake, and railway station within easy reach, the location enhances the appeal of this charming home. Outside, the property continues to impress with its thoughtfully designed outdoor spaces. An enclosed south-facing paved rear garden ideal for enjoying the sunshine and hosting outdoor gatherings. The area provides ample space for garden furniture, potted plants, and storage, catering to various outdoor activities and storage needs. To the front of the property, a paved area with well-stocked borders adds a touch of greenery, enhancing the property's kerb appeal and providing a welcoming entrance for residents and visitors alike. This property's outdoor spaces offer a perfect balance of tranquillity, functionality, and aesthetic appeal, enhancing the overall living experience and making it an ideal place to call home.

- Completely updated mid-terraced house
- Welcoming, cosy sitting room with multi fuel stove with wood lintel
- Dining room with feature fireplace alcove and space for a sofa
- Modern fitted kitchen with fridge, freezer and washing machine
- Three bedrooms with two being good sized double bedrooms
- Stylish four piece bathroom with shower over the bath
- Delightful enclosed south facing paved patio to the rear with space for a shed
- No occupancy restrictions so ideal for a range of purchasers
- UPVC double glazing, re wired electric and recently installed gas central heating
- Well maintained, fantastic turn key property

From Crescent Road in the centre of Windermere, take the first turning left after the traffic lights onto Broad Street and turn right at the T junction at the top onto Woodland Road. Turn left off Woodland Road onto Park Road and then the second turning on the left onto Thornthwaite Road. Number 22 is found on the left hand side.

WHAT3WORDS:reports.though.fans

Council Tax band: D

Tenure: Freehold

EPC Energy Efficiency Rating: C





GROUND FLOOR

PORCH

4' 0" x 3' 1" (1.22m x 0.95m)

Both max. Double glazed door, tiled flooring.

HALLWAY

11' 0" x 3' 6" (3.35m x 1.06m)

Both max. Single glazed door, radiator.

SITTING ROOM

13' 7" x 11' 2" (4.14m x 3.41m)

Both max. Double glazed window, radiator, Morso multi-fuel stove on a slate hearth.

DINING/SITTING ROOM

13' 8" x 11' 7" (4.16m x 3.54m)

Both max. Double glazed window, radiator, fitted cabinets.

KITCHEN

10' 7" x 8' 6" (3.23m x 2.60m)

Both max. Double glazed door, two double glazed windows, good range of base and wall units, stainless steel sink, integrated double oven, gas hob with extractor/filter over, integrated appliances including fridge, freezer and washing machine, pantry, tiled flooring.



FIRST FLOOR

BEDROOM

13' 3" x 10' 2" (4.03m x 3.11m)

Both max. Double glazed window, radiator.

BEDROOM

10' 8" x 9' 5" (3.26m x 2.88m)

Both max. Double glazed window, radiator.

BEDROOM

10' 5" x 6' 11" (3.17m x 2.11m)

Both max. Double glazed window, radiator.

BATHROOM

7' 10" x 7' 7" (2.40m x 2.30m)

Both max. Double glazed window, heated towel radiator, four piece suite comprises W.C. wash hand basin to vanity, bidet, bath with thermostatic shower over, fully tiled walls, extractor fan.

LANDING

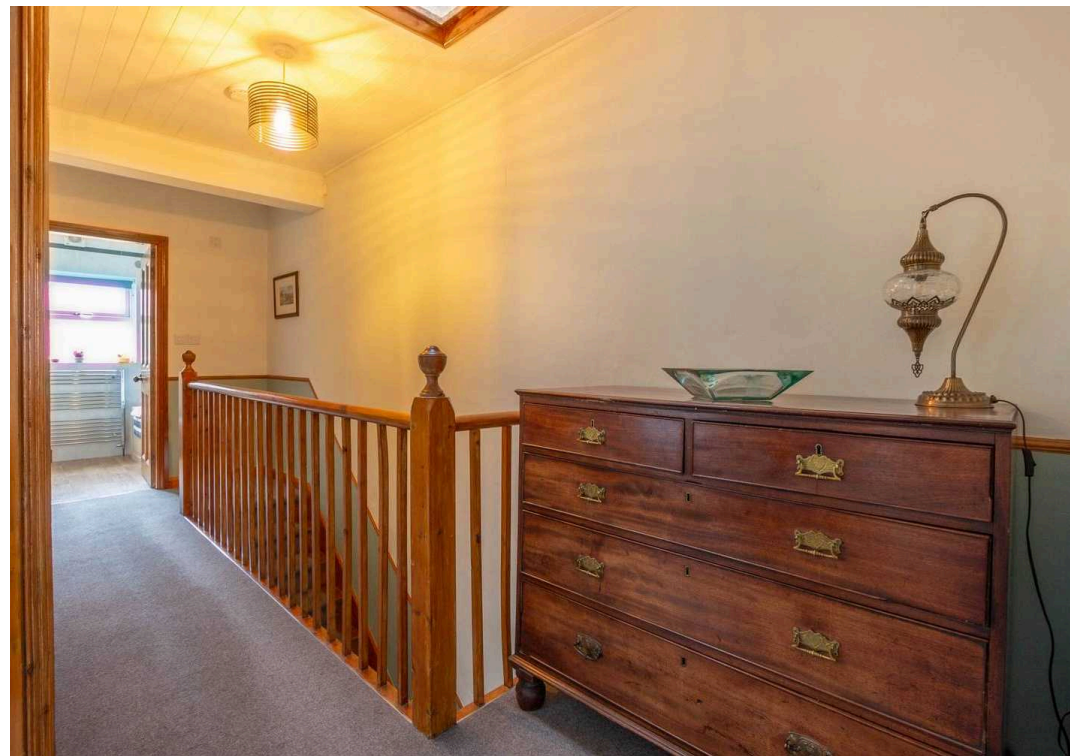
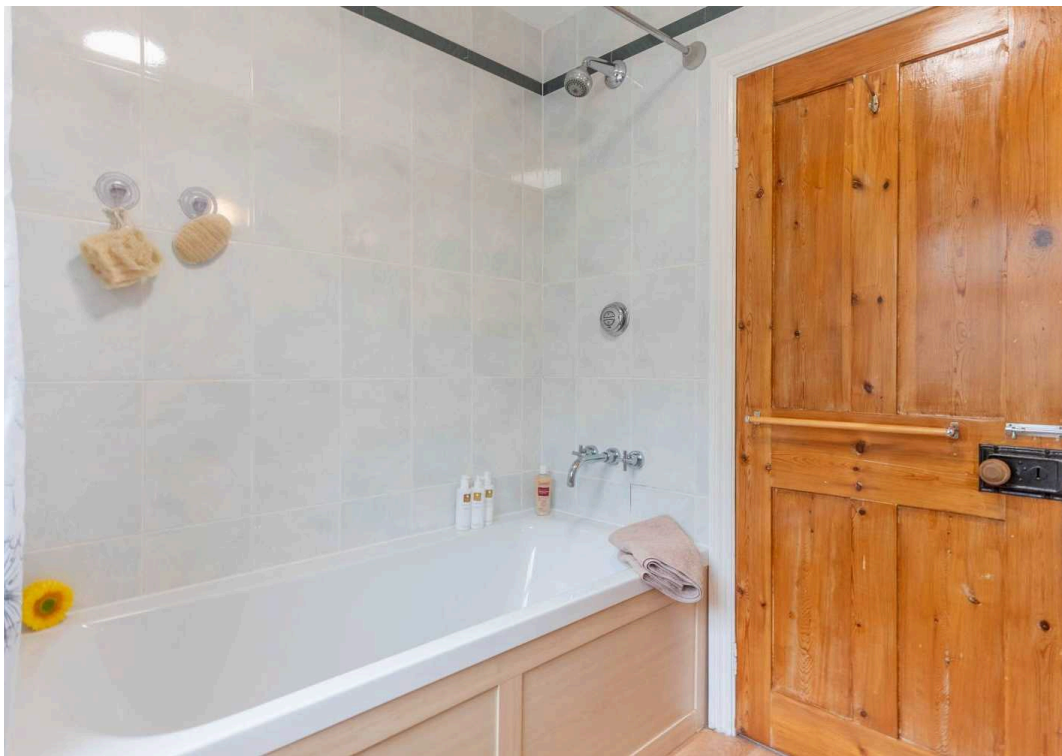
17' 0" x 7' 3" (5.18m x 2.22m)

Both max. Built in cupboard housing a Worcester gas combi-boiler.

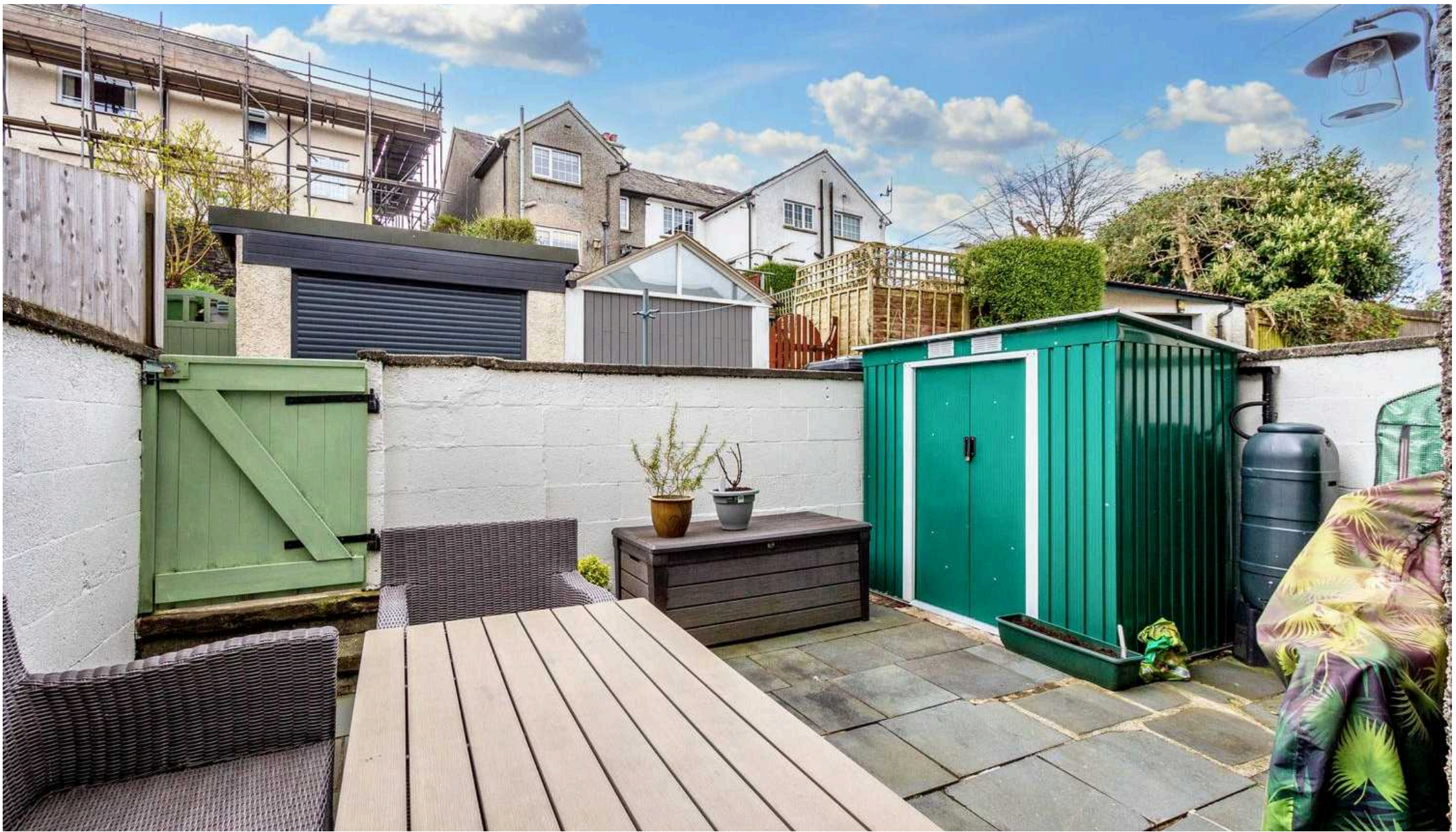
IDENTIFICATION CHECKS

Should a purchaser(s) have an offer accepted on a property marketed by THW Estate Agents they will need to undertake an identification check. This is done to meet our obligation under Anti Money Laundering Regulations (AML) and is a legal requirement. We use a specialist third party service to verify your identity. The cost of these checks is £43.20 inc. VAT per buyer, which is paid in advance, when an offer is agreed and prior to a sales memorandum being issued. This charge is non-refundable.









THW Estate Agents

25b Crescent Road, Windermere - LA23 1BJ

015394 47825 • windermere@thwestateagents.co.uk • www.thwestateagents.co.uk

Please note that descriptions, photographs and plans are for guidance only. Services and appliances have not been tested, measurements are approximate and alterations may not have necessary consents. Contact us for property availability and important details before travelling or viewing properties. THW Estate Agents Ltd is a separate legal entity to the solicitor firm of THW Legal Ltd which has different ownership and clients of THW Estate Agents Ltd do not have the same protection as those of THW Legal Ltd.