



RESIDENCE

22 Gardenside Street, Uddingston, G71 7BY

[www.residenceestateagents.co.uk](http://www.residenceestateagents.co.uk)





Viewing by appointment with Residence Uddingston

T: 01698 444222 | E: [uddingston@residencestateagents.co.uk](mailto:uddingston@residencestateagents.co.uk) | A: 61-63 Main Street, Uddingston, G71 7EP





RESIDENCE







## 3 Bedrooms | 2 Public Rooms | 2 Bathrooms

This extended three-bedroom sandstone terraced villa is situated on the ever-popular Gardenside Street in Uddington, a location renowned for its characterful homes and convenient access to local amenities, schooling and transport links.

The property retains much of its traditional charm while benefiting from well-considered extensions that enhance both space and functionality. The accommodation begins with a welcoming entrance hallway leading to a bright and generously proportioned front-facing lounge, highlighted by an impressive bay window that floods the room with natural light. To the rear is a formal dining room, ideal for entertaining and family gatherings, seamlessly connecting to a large dining kitchen which has been extended to create an excellent everyday living space. The kitchen offers ample room for dining and provides direct access to the rear garden.

The first floor hosts three well-proportioned bedrooms, all offering excellent storage and flexibility for family living. In addition, there is a versatile study or dressing room which opens directly into a family-sized bathroom, creating a practical and appealing layout. Completing this level is a separate shower room, providing further convenience for busy households.

Externally, the property is complemented by well-maintained front and rear gardens, featuring neat lawns and established shrubs that add to the home's kerb appeal. To the rear, a driveway provides valuable off-street parking and is secured behind substantial gates, ensuring both privacy and practicality.

This attractive sandstone home offers generous living space, period character and a sought-after address, making it an ideal choice for families and discerning buyers alike.



1862.20 sq ft | EER = C





RESIDENCE







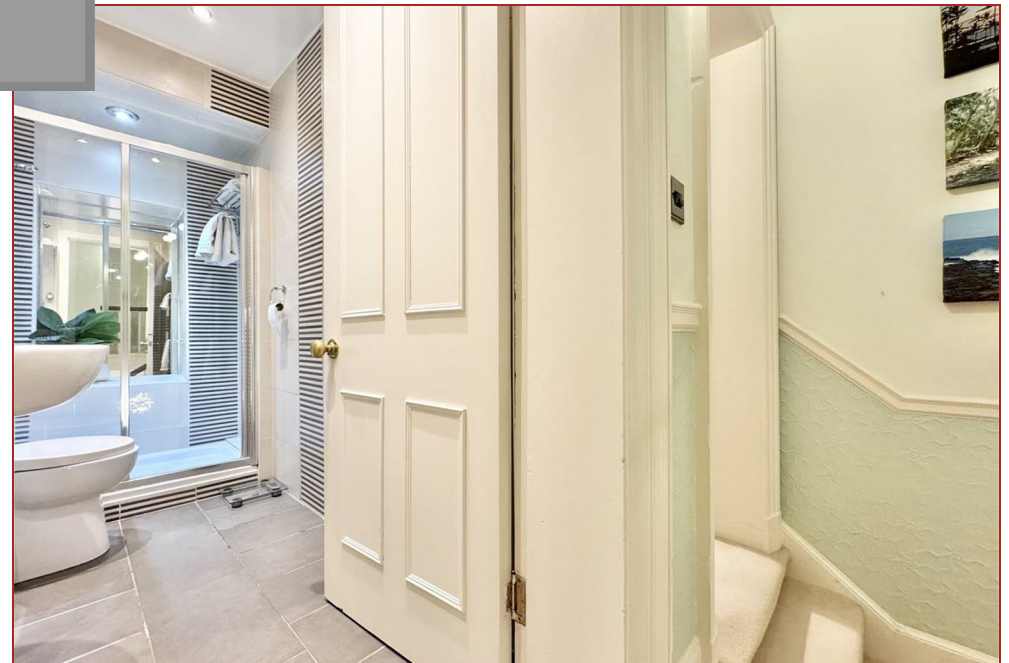
RESIDENCE







RESIDENCE













## Gardenside Street



Floor Plan measurements are approximate and are for illustrative purposes only.  
While we do not doubt the floor plans accuracy, we make no guarantee, warranty or representation  
as to the accuracy and completeness of the floor plan. You or your advisors should conduct a careful,  
independent investigation of the property to determine to your satisfaction as to the suitability  
of the property for your space requirements.

Produced by Plush Plans Ltd

We believe these details to be accurate; however, they do not form any part of a contract. Fixtures and fittings are not included unless specified in the enclosed. Photographs are for general information and it must not be inferred that any item is included for sale with the property. All distances and measurements are approximate. Floorplans may not be to scale and are for illustration purposes only.