



RESIDENCE

34 Kerry Place, Drumchapel, G15 8BY

www.residenceestateagents.co.uk



Viewing by appointment with Residence Uddingston

T: 01698 444222 | E: uddingston@residencestateagents.co.uk | A: 61-63 Main Street, Uddingston, G71 7EP



4 Bedrooms | 2 Public Rooms | 2 Bathrooms

*** CLOSING DATE SET MONDAY 8th DECEMBER @ 12pm *** A deceptively spacious and beautifully presented four-bedroom detached villa, set within a quiet cul-de-sac in a sought-after residential area. The property occupies a generous plot with ample garden space, excellent views and the benefit of parking for two cars.

The accommodation includes a bright entrance hallway with a versatile study or store room and a modern WC under the stairs. The generously proportioned lounge features a large floor to ceiling window and double doors opening into a spacious dining kitchen, which provides direct access to the rear garden and is fitted with a built-under oven, integral gas hob with extractor canopy, dishwasher, and a separate utility room also giving access to the rear garden.

The first floor offers four well-proportioned bedrooms, three of which benefit from built-in wardrobes, including the master bedroom with its own stylish modern shower room. A beautifully presented contemporary family bathroom completes the upper level.

This appealing home is further enhanced by gas central heating, double-glazed windows, Monobloc driveway providing off-street parking and a fully enclosed rear garden that has an elevated plot with garden room/shed.

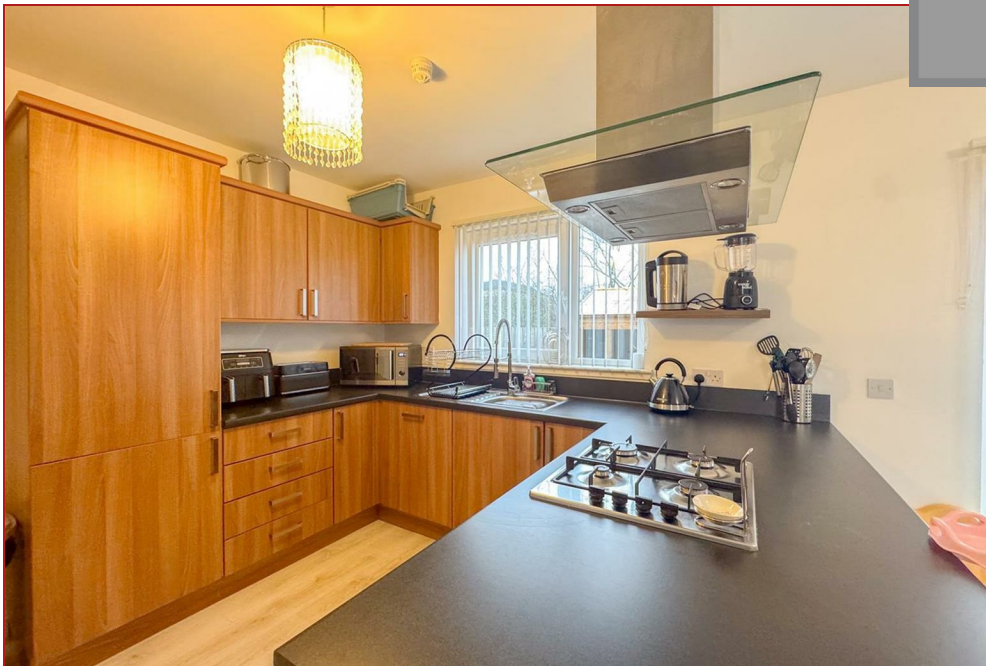
Situated just off Inchfad Drive, Kerry Place enjoys a convenient location within easy reach of Drumchapel's shopping and health centres, and is also close to the Great Western Retail Park, which hosts a Sainsbury's superstore alongside a range of other retailers. Drumry and Drumchapel train stations are both just over a mile away, while Glasgow city centre is easily accessible at around seven miles by road.



1205.60 sq ft | EER = B



RESIDENCE



Kerry Place



Floor Plan measurements are approximate and are for illustrative purposes only. While we do not doubt the floor plans accuracy, we make no guarantee, warranty or representation as to the accuracy and completeness of the floor plan. You or your advisors should conduct a careful, independent investigation of the property to determine to your satisfaction as to the suitability of the property for your space requirements.

Produced by Plush Plans Ltd

We believe these details to be accurate; however, they do not form any part of a contract. Fixtures and fittings are not included unless specified in the enclosed. Photographs are for general information and it must not be inferred that any item is included for sale with the property. All distances and measurements are approximate. Floorplans may not be to scale and are for illustration purposes only.