



RESIDENCE

76 Skylark Gardens, Cambuslang, G72 6AZ

www.residenceestateagents.co.uk



Viewing by appointment with Residence Uddingston

T: 01698 444222 | E: uddingston@residencestateagents.co.uk | A: 61-63 Main Street, Uddingston, G71 7EP



RESIDENCE



2 Bedrooms | 1 Public Rooms | 2 Bathrooms



Welcome to this beautifully presented two-bedroom semi-detached home, built by the renowned Wimpey Homes, offering a perfect blend of modern comfort and practical living. Ideally suited for first-time buyers, young families, or those looking to downsize, this property is located in a popular residential area and boasts a spacious layout with attractive outdoor space.

Upon entering, you are greeted by a welcoming entrance hall leading through to a bright and airy lounge positioned to the rear of the home. This spacious living area is flooded with natural light thanks to the French doors that open directly onto the impressive south-facing rear garden, creating a seamless indoor-outdoor flow perfect for relaxing or entertaining guests.

The modern kitchen is well-appointed with a range of wall and base units, offering ample storage and preparation space. Completing the downstairs accommodation is the WC. Upstairs, the property features two generously sized double bedrooms, both decorated in neutral tones, along with a stylish contemporary bathroom complete with a white suite and tasteful tiling.

Outside, the standout feature is the large, private south-facing rear garden. Enjoy the sunshine on the decked area, ideal for summer barbecues, with a well-maintained lawn beyond offering plenty of space for children or pets to play. The front garden adds further kerb appeal, while a driveway to the side provides off-street parking and benefits from an installed EV charger.

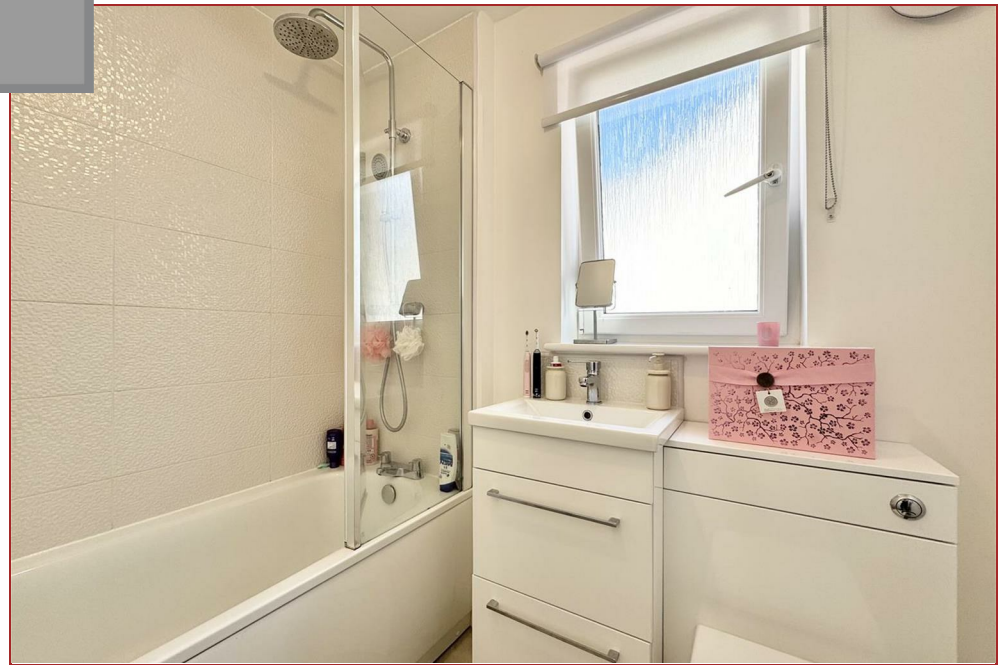
This lovely home is move-in ready and offers all the essentials for comfortable, modern living. Early viewing is highly recommended to fully appreciate everything this delightful property has to offer.



688.89 sq ft | EER = B



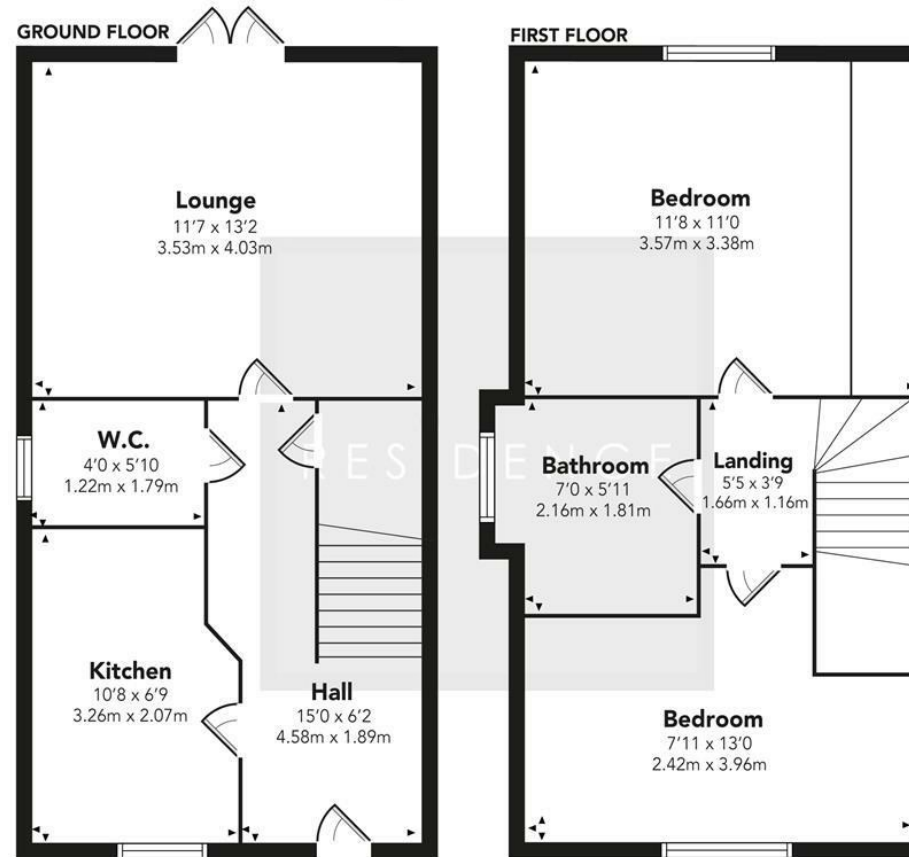
RESIDENCE







Skylark Gardens



Floor Plan measurements are approximate and are for illustrative purposes only.
While we do not doubt the floor plans accuracy, we make no guarantee, warranty or representation as to the accuracy and completeness of the floor plan. You or your advisors should conduct a careful, independent investigation of the property to determine to your satisfaction as to the suitability of the property for your space requirements.

Produced by Plush Plans Ltd

We believe these details to be accurate; however, they do not form any part of a contract. Fixtures and fittings are not included unless specified in the enclosed. Photographs are for general information and it must not be inferred that any item is included for sale with the property. All distances and measurements are approximate. Floorplans may not be to scale and are for illustration purposes only.