



RESIDENCE

9 Clova Place, Uddingston, G71 7BQ

www.residenceestateagents.co.uk



Viewing by appointment with Residence Uddingston

T: 01698 444222 | E: uddingston@residenceestateagents.co.uk | A: 61-63 Main Street, Uddingston, G71 7EP





2 Bedrooms | 1 Public Rooms | 1 Bathrooms

This beautifully presented top-floor two-bedroom flat offers immaculate accommodation throughout and is ideally suited to a wide range of buyers, including first-time purchasers, or investors seeking a high-quality home in a desirable location. The property has been meticulously maintained and boasts a fresh, contemporary interior with stylish finishes and thoughtful touches that create a welcoming and functional living space.

Upon entering the flat, you are greeted by a bright and spacious hallway that provides access to all main apartments and includes useful storage. The lounge enjoys an abundance of natural light from its elevated position and offers a peaceful outlook, making it a perfect space for relaxing or entertaining. Both double bedrooms are generously proportioned and benefit from excellent built-in storage solutions, ensuring a clutter-free environment while maximizing the use of space. These rooms are tastefully decorated in neutral tones, allowing the new owner to easily add their own personal style.

The heart of the home is the dining-sized kitchen, which has been fitted with a range of modern wall and floor units and quality worktops. This is a fantastic space for everyday meals or hosting guests. The bathroom has also been upgraded and features a sleek, modern suite with stylish tiling and a shower over the bath, providing both practicality and a touch of luxury.

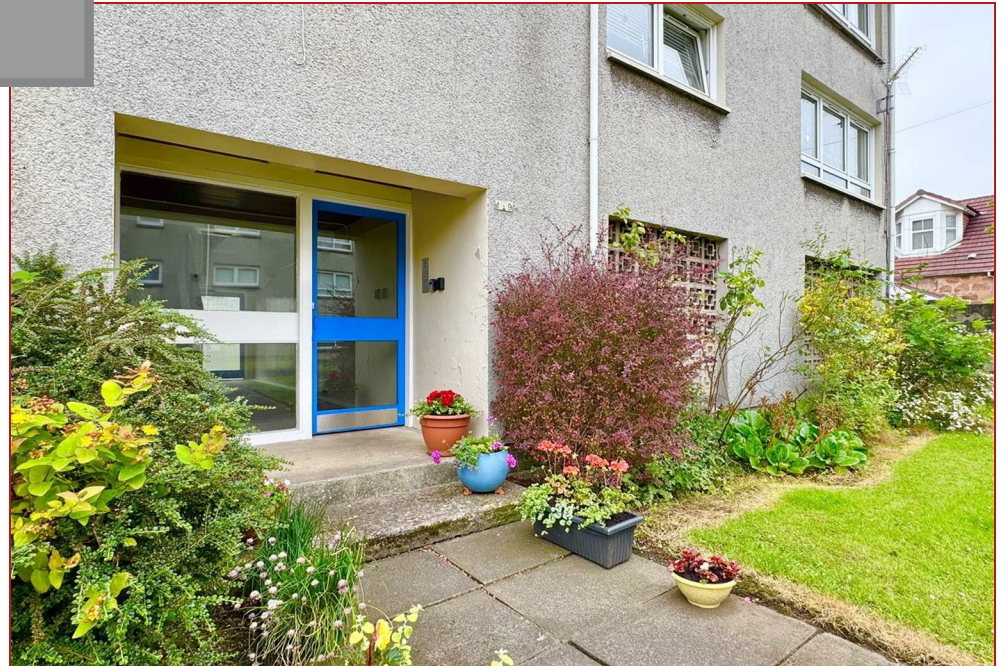
This flat further benefits from gas central heating, double glazing, and secure entry. On the ground floor is a large drying area with a large storage cupboard designated to the flat. Its top-floor position not only offers added privacy and security but also ensures lovely views and a quieter living experience. With its immaculate condition and thoughtful layout, this property is ready to move into and enjoy. Early viewing is highly recommended to fully appreciate the quality and space on offer.



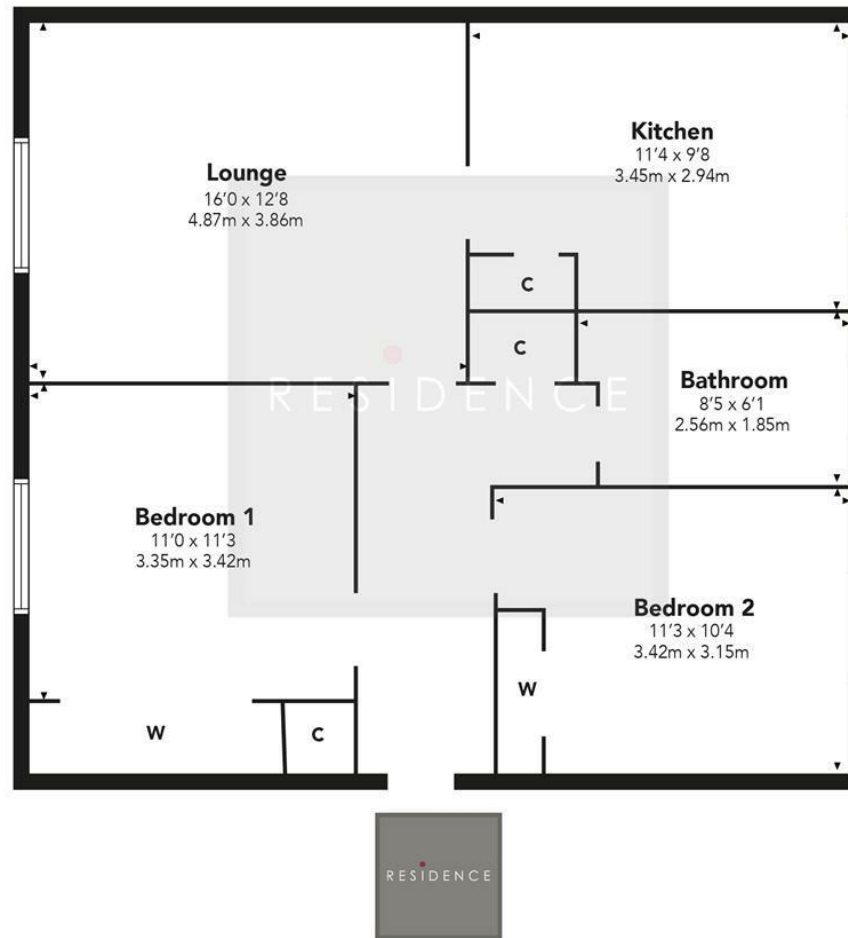
775.00 sq ft | EER = D



RESIDENCE



Clova Place



Floor Plan measurements are approximate and are for illustrative purposes only.
While we do not doubt the floor plans accuracy, we make no guarantee, warranty or representation as to the accuracy and completeness of the floor plan. You or your advisors should conduct a careful, independent investigation of the property to determine to your satisfaction as to the suitability of the property for your space requirements.

Produced by Plush Plans Ltd

We believe these details to be accurate; however, they do not form any part of a contract. Fixtures and fittings are not included unless specified in the enclosed. Photographs are for general information and it must not be inferred that any item is included for sale with the property. All distances and measurements are approximate. Floorplans may not be to scale and are for illustration purposes only.