



RESIDENCE

58 Rydenmains Road, Glenmavis, ML6 0NU

www.residenceestateagents.co.uk



Viewing by appointment with Residence Uddingston

T: 01698 444222 | E: uddingston@residencestateagents.co.uk | A: 61-63 Main Street, Uddingston, G71 7EP



RESIDENCE





3 Bedrooms | 1 Public Rooms | 2 Bathrooms

This well-proportioned three bedroomed end terraced villa has been upgraded and extended into the loft space to create a wonderful principal bedroom with en-suite shower room.

The property has bright and airy rooms, featuring gas central heating and double glazing, great garden space to the front, side and rear whilst having off street parking with driveway to the side.

The accommodation comprises a reception hall, a bright spacious lounge with access to the modern galley style kitchen which has a range of base and wall mounted storage units, a three piece modern family bathroom, three well proportioned bedrooms with a principal en-suite shower room.

The large garden to the rear, side and front is a great feature with a lawn and decking giving great entertaining space to the rear which is fully enclosed by way of timber fencing. The property is well placed and only a short distance to schools, amenities and transport links.

Glenmavis is a small popular village on the outskirts of Airdrie and Coatbridge which has everyday shops, a good school and regular bus services to the nearby towns and cities. Within the town of Airdrie there's a great choice of restaurants, cafes and pubs. The M74 motorway provides excellent access to the central belt linking the surrounding towns and cities. Sports facilities are in abundance and include golf courses, swimming pools, gyms and country parks with picturesque walks.



947.00 sq ft | EER = E



RESIDENCE





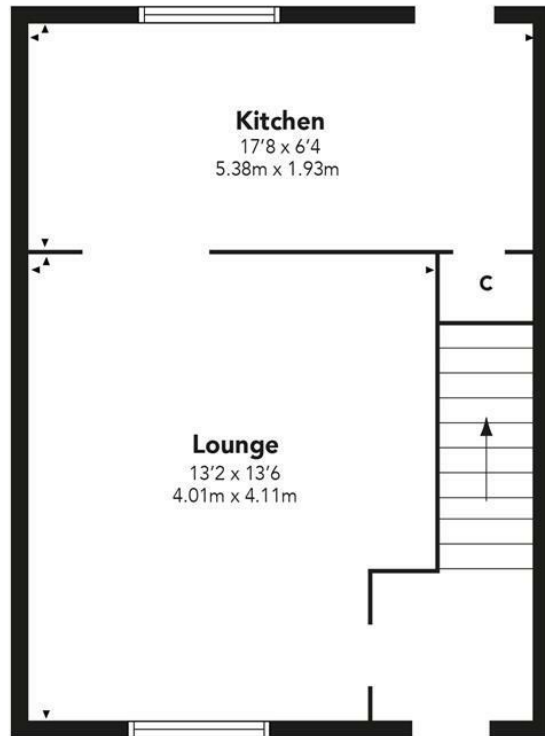
RESIDENCE



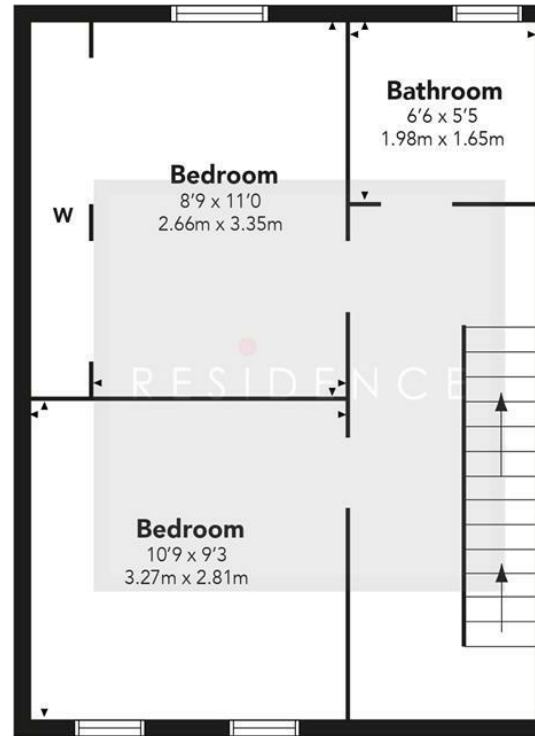


Rydenmains Road

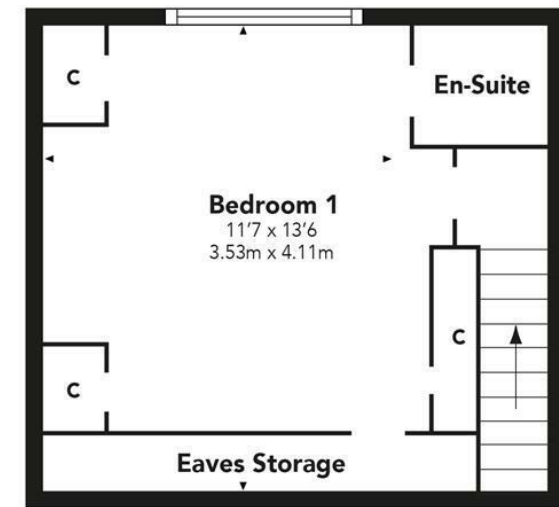
GROUND FLOOR



FIRST FLOOR



Attic



Floor Plan measurements are approximate and are for illustrative purposes only. While we do not doubt the floor plans accuracy, we make no guarantee, warranty or representation as to the accuracy and completeness of the floor plan. You or your advisors should conduct a careful, independent investigation of the property to determine to your satisfaction as to the suitability of the property for your space requirements.

Produced by Plush Plans Ltd

We believe these details to be accurate; however, they do not form any part of a contract. Fixtures and fittings are not included unless specified in the enclosed. Photographs are for general information and it must not be inferred that any item is included for sale with the property. All distances and measurements are approximate. Floorplans may not be to scale and are for illustration purposes only.