



RESIDENCE

21 Calderpark Road, Uddingston, G71 7RG

www.residencestateagents.co.uk



Viewing by appointment with Residence Uddingston

T: 01698 444222 | E: uddingston@residencestateagents.co.uk | A: 61-63 Main Street, Uddingston, G71 7EP



RESIDENCE



5 Bedrooms | 2 Public Rooms | 3 Bathrooms



This larger style and beautifully presented modern detached villa which has been extended to the rear is set within a quiet Residential area and backs onto mature woodland.

Built by Miller Homes circa 2014, this particularly understated and impeccably well finished family home offers bright airy living accommodation which is finished with fresh neutral decor and complimented with a mixture of quality floor coverings. Features include gas central heating, double glazing, modern sanitary ware within the downstairs WC, the family bathroom and the en-suite whilst the modern kitchen incorporates an integrated hob, oven and dishwasher. For additional appliances there is a separate utility room off the kitchen.

The accommodation comprises reception hall, downstairs WC, bay windowed lounge, large open plan kitchen, garden room, formal dining room/bedroom five, four comfortable sized bedrooms on the upper level, master en-suite and a family bathroom.

The floor plan shall provide you with a detailed layout of this well finished and comfortable home, however we recommend viewing to appreciate the quality of finishings and the convenient setting that's on offer.

To the front of the property, a well kept front lawn and a two car driveway, whilst to the rear is patio area and artificial grass, which is all bound by fencing.

Calderpark Road is located within the modern "Keepers Gate" development built on the outskirts of Uddingston by Miller Homes. The nearby village of Uddingston is highly regarded for its excellent main street where you can find the majority of every day shopping needs and a great choice of restaurants, bistros and pubs. The property is located within popular school catchment also.



1700.00 sq ft | EER = C

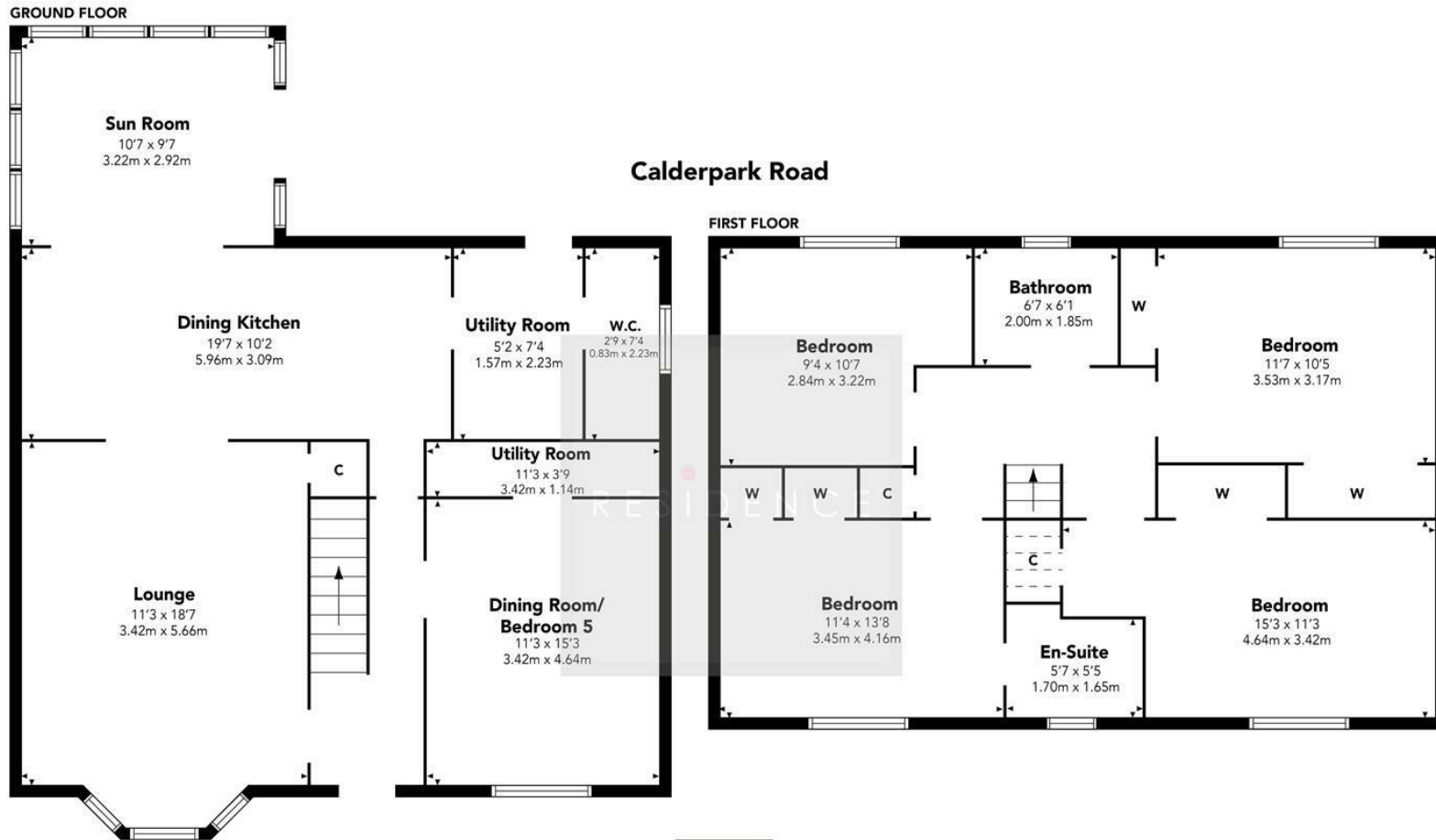


RESIDENCE









Floor Plan measurements are approximate and are for illustrative purposes only. While we do not doubt the floor plans accuracy, we make no guarantee, warranty or representation as to the accuracy and completeness of the floor plan. You or your advisors should conduct a careful, independent investigation of the property to determine to your satisfaction as to the suitability of the property for your space requirements.

Produced by Plush Plans Ltd

We believe these details to be accurate; however, they do not form any part of a contract. Fixtures and fittings are not included unless specified in the enclosed. Photographs are for general information and it must not be inferred that any item is included for sale with the property. All distances and measurements are approximate. Floorplans may not be to scale and are for illustration purposes only.