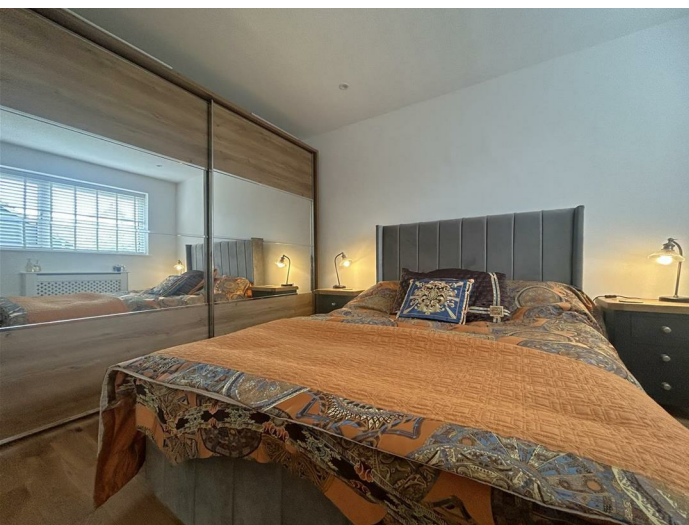




Ibbett Mosely

3 Wulfred Way, Kemsing, TN15 6PR



3 Wulfred Way, Kemsing, TN15 6PR

IMMACULATE 2 BEDROOM SEMI-DETACHED BUNGALOW IN THE PICTURESQUE VILLAGE OF KEMSING, WITH LOCAL AMENITIES NEARBY.

REDUCED - £1,950 PCM

- EPC - D
- NEWLY FITTED SHOWER
- BUILT IN STORAGE
- GARDEN OUTBUILDING & GARAGE
- COUNCIL TAX - E
- STUNNING GARDEN
- VILLAGE LOCATION
- 2 BEDROOMS
- FIREPLACE
- OFF STREET PARKING

We are proud to present to you this modern and bright bungalow located on Wulfred Way in the picturesque village of Kemsing. This delightful property boasts 2 bedrooms, perfect for a small family or as a peaceful retreat for a couple. The bungalow features a well-maintained bathroom with brand new shower recently fitted, ensuring convenience and comfort for its residents.

This property offers a cosy and inviting atmosphere throughout, coupled with a village location providing a tranquil setting, while still offering easy access to nearby amenities for your daily needs.

One of the highlights of this fabulous bungalow is its stunning garden - a perfect spot for enjoying some rest and relaxation on a sunny afternoon or hosting gatherings with friends and family. Additionally, the property benefits from off-street parking, ensuring

convenience for residents and their guests.

Don't miss the opportunity to make this superb bungalow your new home. Embrace the peaceful village lifestyle while enjoying the comfort and warmth this property has to offer.







Ibbett Mosely

Sevenoaks 01732 452246

EPC Rating- D

Offices at - BOROUGH GREEN - OTFORD - SEVENOAKS - SOUTHWARK
TONBRIDGE - WESTMINSTER - WESTERHAM - WEST MALLING

www.ibbettmosely.co.uk

IMPORTANT - Ibbett Mosely, for themselves and for the vendors or lessors of this property whose agents they are give notice that (i) these particulars are set out as a general outline only for guidance of intending purchasers or lessees, and do not constitute, nor constitute part of an offer or contract; (ii) all descriptions, dimensions references to condition and necessary permissions for use and occupation, and other details are given without responsibility and any intending purchasers or tenants should not rely on them as statements or representations of fact but must satisfy themselves by inspection or otherwise as to the correctness of each of them; (iii) no person in the employment of Ibbett Mosely, has any authority to make or give any representation or warranty whatever in relation to this property' ver 3.0.

...a name you can trust
offices in Kent and London