



Barrington Road, Foxton Cambridge
Guide Price £340,000 Freehold

**Sharman
Quinney**

Key Features



- Sale by Modern Auction (T&Cs apply)
- Subject to an undisclosed Reserve Price
- Buyers fees apply
- Ideally located in the popular village of Foxton close to local amenities
- Excellent transport links
- Well-proportioned throughout
- Generous front and rear garden
- Potential to extend subject to planning

Located in the popular and well-served village of Foxton, this detached bungalow enjoys a convenient position close to a range of local amenities including a village shop, post office, public house, primary school and church. The village sits just 8 miles south-west of Cambridge, making it an excellent choice for those seeking a peaceful setting with easy access to the city.



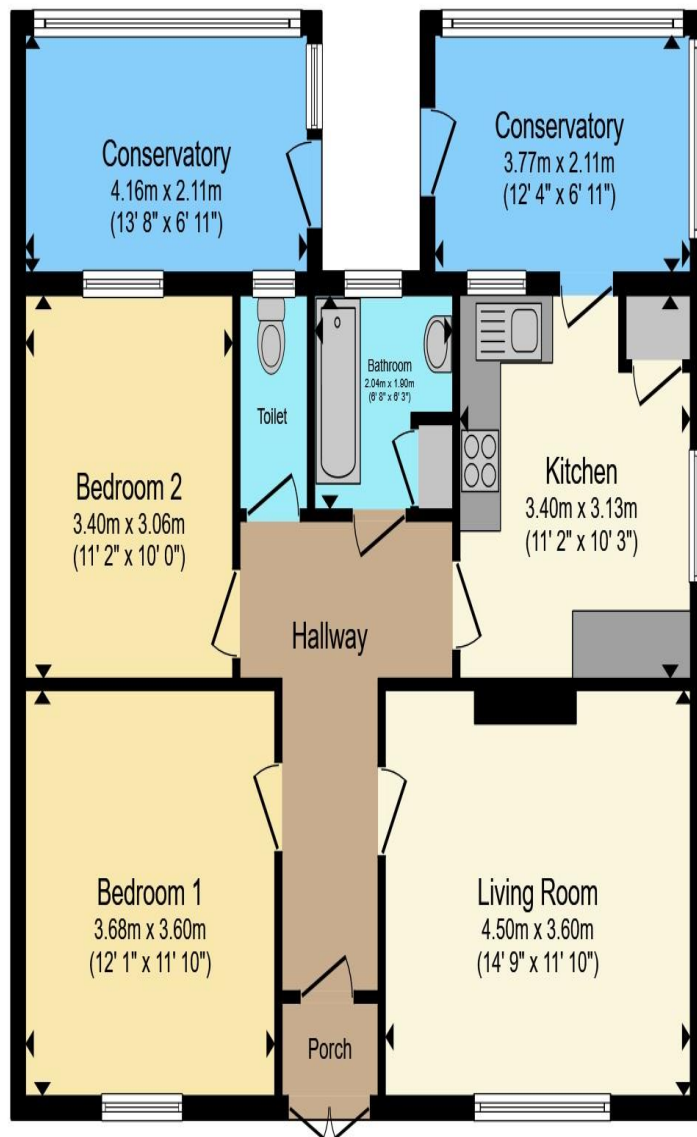
Foxton benefits from strong transport connections. The mainline railway station, within comfortable walking distance, provides regular services to Cambridge and London King's Cross, making the property ideal for commuters. Road links are equally advantageous, with straightforward access to the A10, which connects to the M11, A505 and A1. For families, the area falls within the catchment of the well-regarded Melbourn Village College for secondary schooling.

The accommodation comprises an entrance porch leading into a welcoming entrance hall that provides a good sense of space. The living room features a fireplace and offers a pleasant outlook to the front. The kitchen is positioned to the rear of the property and benefits from direct access into the conservatory, which provides an additional flexible living area and opens out to the garden.

On the left-hand side of the property are two well-proportioned double bedrooms. The front bedroom enjoys views over the garden, while the second double bedroom, located towards the rear, connects to a secondary conservatory that offers further potential as a study, hobby room or relaxation space. A bathroom and separate WC complete the internal accommodation.

Externally, the property boasts a generous rear garden, mainly laid to lawn, providing plenty of outdoor space and excellent potential for





Total floor area 87.9 m² (946 sq.ft.) approx

This floor plan is for illustrative purposes only. It is not drawn to scale. Any measurements, floor areas (including any total floor area), openings and orientation are approximate. No details are guaranteed, they cannot be relied upon for any purpose and they do not form part of any agreement. No liability is taken for any error, omission or misstatement. A party must rely upon its own inspection(s). Powered by www.propertybox.io

**Sharman
Quinney**

landscaping or future extension (subject to planning). A single garage and driveway sit to the side, offering secure parking and storage. The front garden is also of good size and laid to lawn, creating an attractive approach to the bungalow and enhancing its sense of openness.

Porch

Hallway

Living Room 4.50m x 3.60m (14'9" x 11'10")

Kitchen 3.40m x 3.13" (11'2" x 10'3")

Conservatory 3.77m x 2.11m (12'4" x 6'11")

Bathroom

WC

Bedroom one 3.68m x 3.60m (12'1" x 11'10")

Bedroom two 3.40m x 3.06m (11'2" x 10'0")


Conservatory 4.16m x 2.11m (13'8" x 6'11")

To view this property call Sharman Quinney on:
01223 844760

Selling your property?

Contact us to arrange a **FREE** home valuation.

 01223 844760

 49 Woollards Lane, Great Shelford, CAMBRIDGE,
Cambridgeshire, CB22 5LZ

 greatshelford@sharmanquinney.co.uk

 www.sharmanquinney.co.uk



 SCAN ME



Sharman Quinney Holdings Limited is registered in England and Wales under company number 4174227, Registered Office is Cumbria House, 16-20 Hockliffe Street, Leighton Buzzard, Bedfordshire, LU7 1GN. VAT Registration Number is 500 2481 05.

1: These particulars do not constitute part or all of an offer or contract. 2: The measurements indicated are supplied for guidance only and as such must be considered incorrect. 3: Potential buyers are advised to recheck the measurements before committing to any expense. 4: Sharman Quinney has not tested any apparatus, equipment, fixtures, fittings or services and it is the buyers interests to check the working condition of any appliances. 5: Sharman Quinney has not sought to verify the legal title of the property and buyers must obtain verification from their legal representative. 6: Intending purchasers will be asked to produce identification documentation at a later stage and we would ask your co-operation in order that there will be no delay in agreeing the sale. Ref: GTS103075 - 0001

