



High Street, Whittlesford Cambridge
offers over £300,000 **Freehold**

**Sharman
Quinney**

Key Features



- Sought after location
- Two bedrooms
- Quiet road
- Freehold
- Sizeable garden

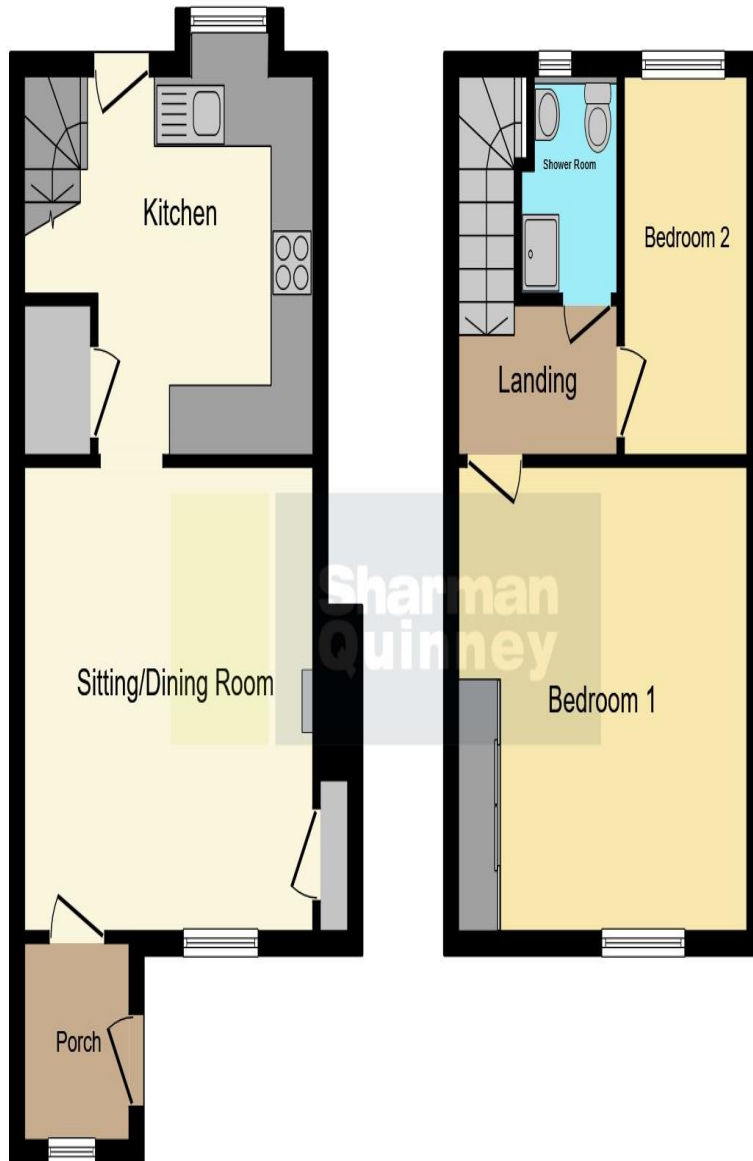
We are pleased to present this characterful 2 bed home in the very popular village of Whittlesford. Upon entrance, there is the generously sized living room with ample space for a dining table with built in storage. Following into the kitchen which includes modern appliances and plenty of cabinet/storage space. The kitchen then has access into the garden which is very private and well maintained.

On the first floor, there are two bedrooms and a family bathroom. Bedroom 1 is a large double sized room with built in storage space. Bedroom 2 overlooks the garden for some lovely views. The family bathroom is complete with a fitted shower.

Measurements

Living room - 4.0m x 3.9m (13'12" x 12'80")





Ground Floor

First Floor

Kitchen - 3.3m x 2.4m (10'8" x 7'87")

Master bedroom 4.0m x 3.9m (13'12" x 12'80")

2nd Bedroom 1.7m x 3.1m (5'57" x 10'17")

Landing

Bathroom


This floorplan is for illustrative purposes only and is not drawn to scale. Measurements, floor-areas, openings and orientations are approximate. They should not be relied upon for any purpose and do not form any part of an agreement. No liability is taken for any error or mis-statement. All parties must rely on their own inspections.

To view this property call Sharman Quinney on:
01223 844760

Selling your property?

Contact us to arrange a **FREE** home valuation.

 01223 844760

 49 Woollards Lane, Great Shelford, CAMBRIDGE,
Cambridgeshire, CB22 5LZ

 greatshelford@sharmanquinney.co.uk

 www.sharmanquinney.co.uk



 SCAN ME



Sharman Quinney Holdings Limited is registered in England and Wales under company number 4174227, Registered Office is Cumbria House, 16-20 Hockliffe Street, Leighton Buzzard, Bedfordshire, LU7 1GN. VAT Registration Number is 500 2481 05.

1: These particulars do not constitute part or all of an offer or contract. 2: The measurements indicated are supplied for guidance only and as such must be considered incorrect. 3: Potential buyers are advised to recheck the measurements before committing to any expense. 4: Sharman Quinney has not tested any apparatus, equipment, fixtures, fittings or services and it is the buyers interests to check the working condition of any appliances. 5: Sharman Quinney has not sought to verify the legal title of the property and buyers must obtain verification from their legal representative. 6: Intending purchasers will be asked to produce identification documentation at a later stage and we would ask your co-operation in order that there will be no delay in agreeing the sale. Ref: GTS102676 - 0004