



North Road West, Plymouth, PL1 5DJ

£97,000 - Leasehold (973yrs)



2



1



1



1

- ✓ 2 DOUBLE BEDROOMS
- ✓ LOUNGE/DINER
- ✓ 1ST FLOOR FLAT
- ✓ GAS CENTRAL HEATING

- ✓ DOUBLE GLAZING
- ✓ GOOD RENTAL HISTORY
- ✓ EARNING £10K PA
- ✓ FULLY TENANTED

Fees from just £825 with no commission



Calling all Investors!!!!

This great 2 bed City Centre flat boasts a return of £10k pa. With tenants in situ and a long successful rental history this would make a lovely addition to any portfolio or even a 1st investment. 2 double bedrooms, Lounge, Kitchen a Shower room this 1st floor flat is great for students or professionals given its proximity to both the City Centre, the Train Station and the University.



ACCOMMODATION

LOUNGE/DINER 13' 3" x 11' 9" (4.058m x 3.606m)

A good sized lounge with an original feature cast iron fireplace. Double glazed window with views to the front of the property. Radiator.

KITCHEN 7' 7" x 8' 2" (2.321m x 2.508m)

Range of base and wall cabinets. Stainless steel sink and drainer. Gas Hob. Electric Oven. Cooker hood. Space and plumbing for a washing machine. Double glazed window with views to the rear of the property.

BEDROOM 1 14' 10" x 9' 1" (4.545m x 2.772m)

Steps lead down to the L - shaped master bedroom. Double glazed window overlooking the rear of the property. Radiator.

SHOWER ROOM 5' 1" x 6' 10" (1.555m x 2.091m)

White suite comprising of a half crescent corner shower cubical. Low level w/c and pedestal wash hand basin.

BEDROOM 2 13' 1" x 7' 7" (3.995m x 2.314m)

Another L - shaped double room with view to the front of the property. Radiator.

With a just over 10% yield this property will not be round for long! Call now to book a viewing!





**Mortgage
Advice Bureau**

Working with



Working with Citysales Mortgage Advice Bureau is one of the UK's largest expert mortgage brokers

Our benefits to you:

- Access to 1000s of mortgages to get you the most suitable deal
- Choice of over 90 UK lenders
- Protection for you, should the unexpected happen

Our expert financial advisers will:

- Help you through the process step-by-step
- Work out how much you can borrow
- Advise on how much it will cost
- Advise on how much protection you may need
- Do all the paperwork - you won't need to worry about a thing!

Ritchie Nash is the in-house Mortgage Adviser at Citysales and has 20 years experience in financial services. He has an in-depth knowledge of the mortgage market and can guide you through your property purchase or remortgage from start to finish. As an expert adviser, he has access to over 11,000 mortgage deals ensuring you get the right mortgage to suit your needs.



Call: Ritchie Nash on 01752 21 1111 or 07881 821 216

Email: ritchie.nash@mab.org.uk

Visit: www.mortgageadvicebureau.com/citysales

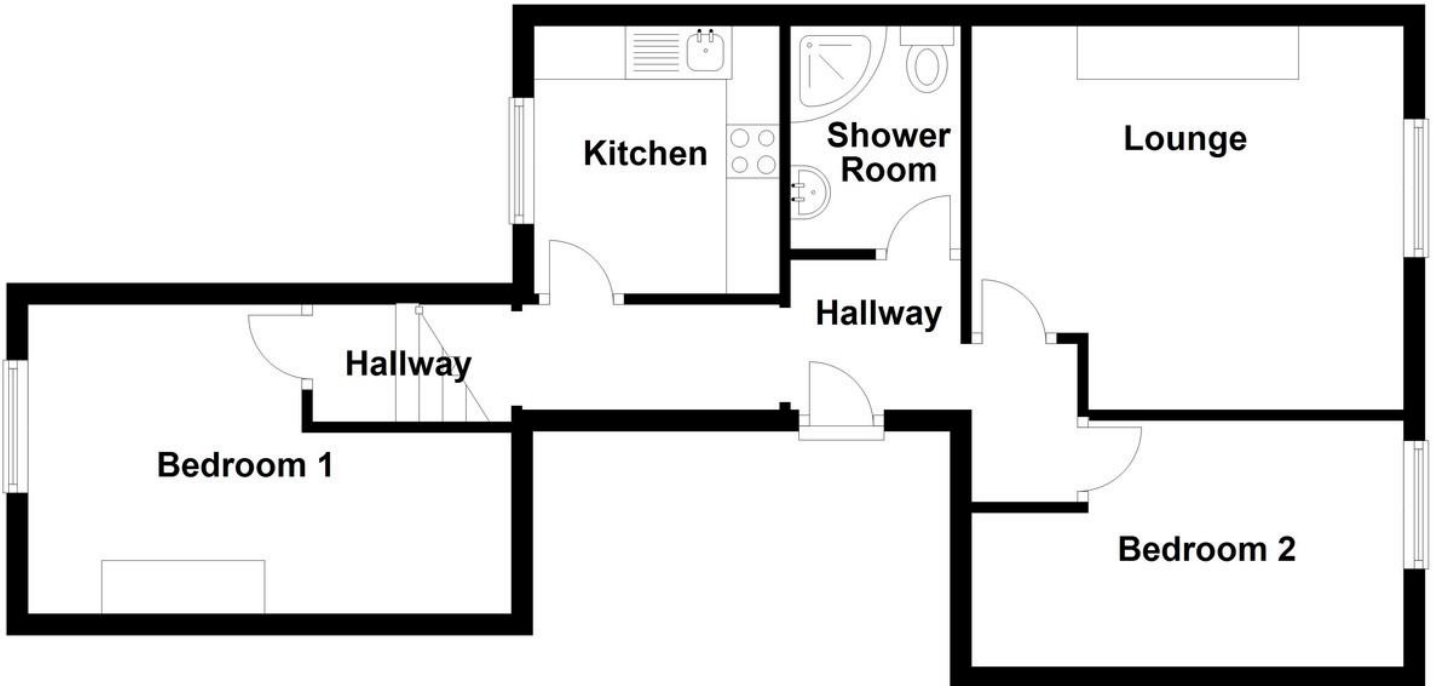
For insurance business we offer products from a choice of insurers.

Your home may be repossessed if you do not keep up repayments on your mortgage.

There will be a fee for mortgage advice. The actual amount you pay will depend upon your circumstances and loan amount. The fee is up to 1% but a typical fee is 0.3% of the amount borrowed.

FLOORPLANS

First Floor Flat



%epcGraph_c_1_328%

COUNCIL TAX BAND

Tax band A

TENURE

Leasehold

LOCAL AUTHORITY

HEAD OFFICE

Beechwood House
Beech Avenue
Plymouth
PL4 0QQ

T: 01752 21 11 11
E: hello@citysales.org
W: www.citysales.org

Agents Note: Whilst every care has been taken to prepare these sales particulars, they are for guidance purposes only. All measurements are approximate and for general guidance purposes only and whilst every care has been taken to ensure their accuracy, they should not be relied upon and potential buyers are advised to recheck the measurements