



Battisford Park Luxury Lodge

Asking Price Of £165,000 - Leasehold



2



2



1



2

- ✓ OPEN ALL YEAR -12 MONTH USE
- ✓ FULLY FURNISHED
- ✓ BRAND NEW

- ✓ KITCHEN WITH INTEGRATED APPLIANCES
- ✓ NO CHAIN
- ✓ OVER 45S DEVELOPMENT

Fees from just £825 with no commission



Luxuriously appointed 2 bedroom park lodges available from just £137,500. Each are fully furnished and boast contemporary design features including integrated appliances, open plan living spaces and en-suite facilities.



ACCOMMODATION

PROPERTY DESCRIPTION Bright and comfortable with a fresh and airy feel, the affordable Wessex Classic Lodge is perfect for getting away from it all with its unique character and true Wessex style.

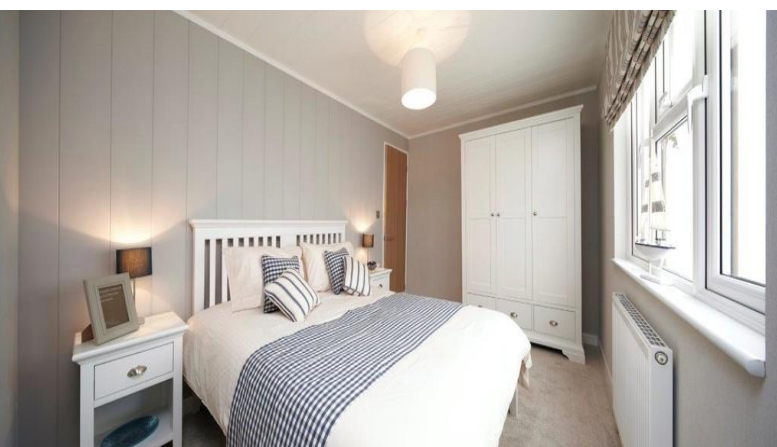
On entering through large French doors, the spacious living area immediately evokes a feeling of comfort and ease. A white paneled ceiling and large windows accentuate the feeling of space and with its soft colour pallet and comfortable sofas, you'll be able to sit back and relax in true style.

The high gloss kitchen provides ample cupboard space in addition to accommodating the full complement of integrated kitchen appliances. A particular feature of the kitchen is the wide work surface between the kitchen and dining areas which creates a breakfast bar in addition to providing an extremely practical work area.

Light and inviting the bedrooms continue the fresh and comfortable feel with soft checked fabrics, panelled feature walls and freestanding Bentley furniture - a perfect haven on a warm summers night or cold winters evening. Well equipped and stylish, the contemporary styled bathroom and en-suite are ideal for having a soak and unwinding at the end of the day.

Established as a firm favourite, the Classic lives up to its name and is sure to stand the test of time.

LOCATION The Holiday Lodge site consists of 14 high specification, luxury holiday homes at Batisford Park, just 6 miles from Plymouth in South Devon. Batisford Park is located in picturesque countryside on the fringes of the Dartmoor National Park, yet close to the most beautiful seaside towns South Devon has to offer.





**Mortgage
Advice Bureau**

Working with



Working with Citysales Mortgage Advice Bureau is one of the UK's largest expert mortgage brokers

Our benefits to you:

- Access to 1000s of mortgages to get you the most suitable deal
- Choice of over 90 UK lenders
- Protection for you, should the unexpected happen

Our expert financial advisers will:

- Help you through the process step-by-step
- Work out how much you can borrow
- Advise on how much it will cost
- Advise on how much protection you may need
- Do all the paperwork - you won't need to worry about a thing!

Ritchie Nash is the in-house Mortgage Adviser at Citysales and has 20 years experience in financial services. He has an in-depth knowledge of the mortgage market and can guide you through your property purchase or remortgage from start to finish. As an expert adviser, he has access to over 11,000 mortgage deals ensuring you get the right mortgage to suit your needs.



Call: Ritchie Nash on 01752 21 1111 or 07881 821 216

Email: ritchie.nash@mab.org.uk

Visit: www.mortgageadvicebureau.com/citysales

For insurance business we offer products from a choice of insurers.

Your home may be repossessed if you do not keep up repayments on your mortgage.

There will be a fee for mortgage advice. The actual amount you pay will depend upon your circumstances and loan amount. The fee is up to 1% but a typical fee is 0.3% of the amount borrowed.

FLOORPLANS

%epcGraph_c_1_328%

COUNCIL TAX BAND

Tax band A

TENURE

Leasehold

LOCAL AUTHORITY

HEAD OFFICE

Beechwood House
Beech Avenue
Plymouth
PL4 0QQ

T: 01752 21 11 11
E: hello@citysales.org
W: www.citysales.org

Agents Note: Whilst every care has been taken to prepare these sales particulars, they are for guidance purposes only. All measurements are approximate and for general guidance purposes only and whilst every care has been taken to ensure their accuracy, they should not be relied upon and potential buyers are advised to recheck the measurements