



WOOLWELL

O.I.R.O. £750,000

Stunning 3/4 Bedroom Bungalow

 3/4 Bedrooms

 2 Bathrooms

 3 Reception Rooms

 EPC Rating: D (67)


MILLER
TOWN & COUNTRY



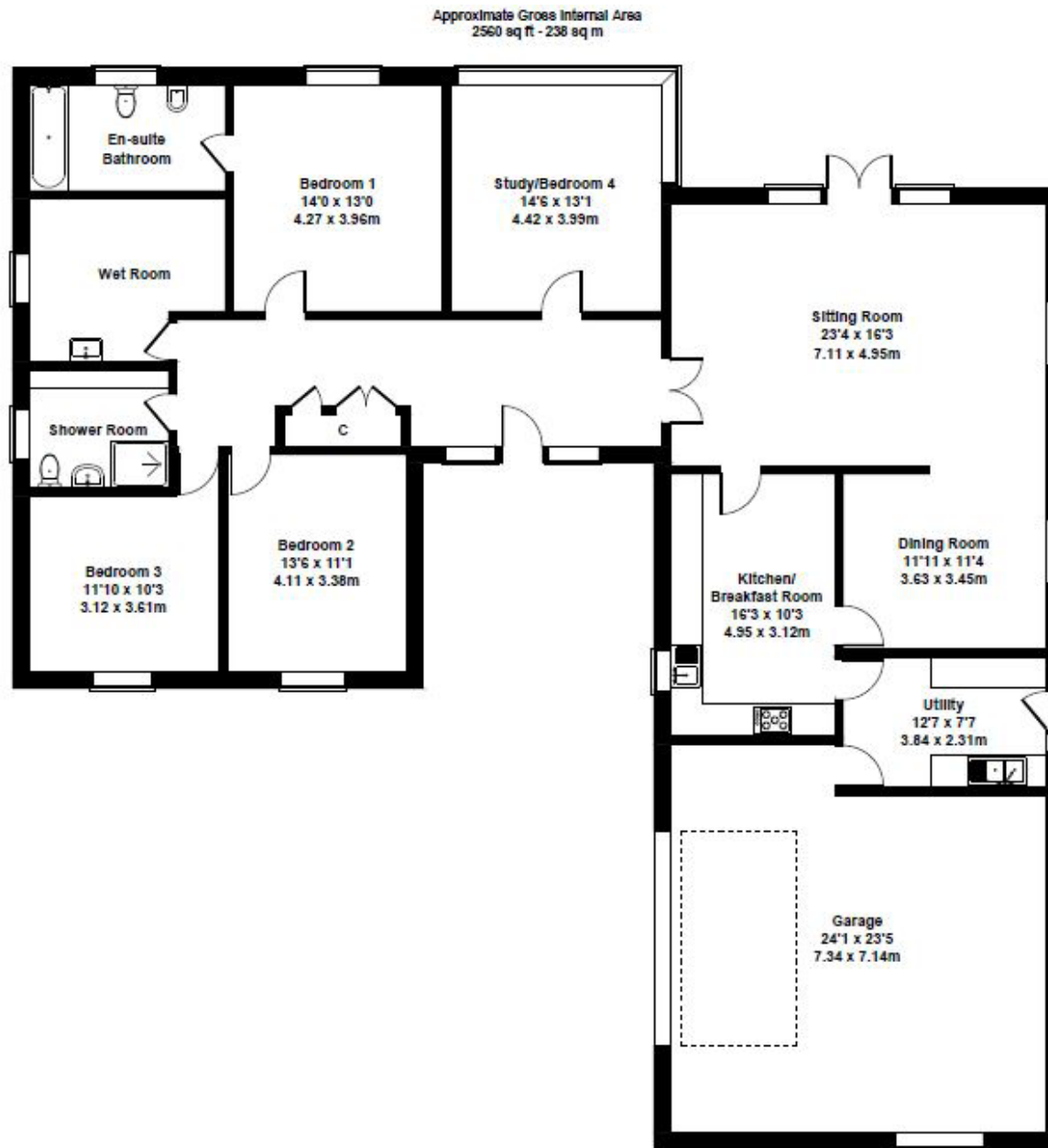
- » Luxuriously Appointed Bungalow
- » Small Select Development
- » Three/Four Bedrooms
- » Double Garage & Parking
- » Attractive Wrap around Gardens
- » Close to Derriford and Woolwell
- » Short drive from open Moorland

The Property

This beautifully presented bungalow is situated in a small select and quiet close in Woolwell, within a short walk of a wide range of amenities including supermarkets and take aways. Offering large light airy rooms and a high quality finish throughout, this really is a superb property in a highly sought after area. The spacious living room opens into a separate dining room and a large kitchen. A spacious utility room has a connecting door to the integral garage. A further room currently used as a home office could be utilised as a garden room or forth bedroom if required. There is an En-Suite to the principle bedroom and a separate Shower room/WC as well as a luxurious wetroom which was formerly another double bedroom. Two further double bedrooms look out on the front gardens. The brick paved driveway provides off road parking for several cars and the electric garage roller shutter door gives easy access in the integral garage.

Location

The property is situated in a quiet cul de sac within an easy walking distance of the local amenities including Tesco and Lidl. Woolwell is situated on the fringe of Plymouth with easy access into the city centre and (cont)



GROUND FLOOR

Not to Scale. Produced by The Plan Portal 2024
For Illustrative Purposes Only.

Location (cont)

Derriford Hospital along with the Science Park and Medical training centre. In the opposite direction just a few minutes drive away are Plym Bridge Woods and Roborough Down, a large open area of moorland off which are the villages of Clearbrook and towards the pretty nearby market town of Tavistock lie Yelverton and Crapstone.

Accommodation

Ground Floor

- Reception Hall 27'11" X 7'2"
- Living Room 23'3" x 16'3"
- Dining Room 11'10" x 11'3"
- Kitchen/Breakfast Room 10'11" x 16'3"
- Utility 11'10" x 7'7"
- Garden Room/Study/Bed 4 13'1" x 14'5"
- Bedroom 1 12'11" x 13'10"
- En-Suite 9'11" x 6'5"
- Bedroom 2 11'10" x 13'6"
- Bedroom 3 11'1" x 13'6"
- Bathroom 8'8" x 6'8"
- Luxury Wet Room 9'11" x 10'1"
- Double Garage 24'2" x 23'3"

Services: Mains electric, gas, water and drainage.

Council Tax Band: D

Tenure: Freehold

Accommodation

A glass door and side screen lead into a spacious reception hall which offers a welcoming feeling of space. The larger than average reception rooms and kitchen offers a great space for family or entertaining and the living room has doors leading out onto a generous patio area to the rear with built in BBQ, an ideal space for al fresco dining during the best of the Spring and Summer months. There is a large formal dining room and a generous Kitchen/Breakfast room. All of the accommodation is well proportioned and there is an easy flow, between the living space and the bedroom areas and bathrooms.







Outside

To the front of the property is a large brick paved driveway and pleasant formal gardens with pathways around both sides and a combination of lawn, and planted beds and borders. To the rear is a secluded South facing garden with patio area off the living room with Built in BBQ area and a pleasant level lawn with planted borders with a variety of perennials and established shrubs.





Miller Town & Country | 01822 617243

2 Drake Road, Tavistock, Devon, PL19 0AU.

tavistock@millertc.co.uk | www.millertc.co.uk



VIEWING:

Strictly through the vendor's sole agents
Tavistock 01822 617243
Okehampton 01837 54080

CONSUMER PROTECTION FROM UNFAIR TRADING REGULATIONS 2008:

These particulars are believed to be correct but their accuracy is not guaranteed nor do they form part of any contract.

