



Charming family home set on the edge of the village

exclusive to

SAUNDERS

richardsaunders.co.uk

Outwood Lane Kingswood KT20 6JW

Kingswood Village 1 mile
Epsom 4 miles Sutton 5 miles
Reigate 3 miles London 17 miles
M23/M25 3 miles London by rail 40 minutes
All times and distances are approximate

This handsome four bedroom semi-detached house is set in a mature and landscaped plot approaching a third of an acre opposite the open spaces of Surrey Downs Golf Club. With plentiful character and charm, this property offers a fantastic opportunity for an incoming owner to acquire a home where they can put their own stamp on it.

- | Entrance Hall
- | Sitting-Dining Room
- | Breakfast Room
- | Kitchen
- | Cloakroom
- | 4 Bedrooms
- | Bathroom
- | 0.3 acre plot
- | Garage and off-street parking

Price £735,000





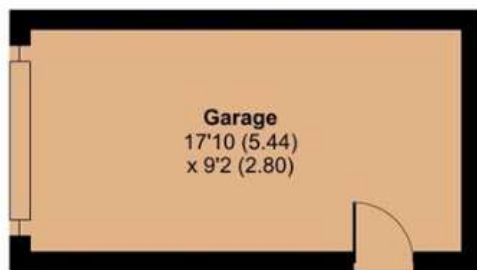
This four bedroom semi-detached house is set towards the centre of a beautifully landscaped plot in excess of 0.3 acre. The four bedrooms are all of a good size, three of which are doubles, with views over the rear garden or to the wooded area to the front. The sitting - dining room is open-plan with views to the front, a fireplace and characterful herringbone floor, behind is the breakfast room which opens to the fitted kitchen. The rear garden extends up to 150' whilst to the front a water feature is landscaped in with off-street parking and the detached garage set at the front of the plot.

Situated on the edge of Kingswood Village and opposite the open spaces of Surrey Downs golf club whilst being only a mile to the village centre and station. Kingswood Station offers the commuter frequent services to London Bridge in just over 50 minutes and the M25 motorway is accessible within a few minutes at Reigate Hill (Junction 8), thus enabling fast routes to both Gatwick and Heathrow airports in around 20 and 45 minutes respectively, as well as the coastal ports. The village has local shopping and the Kingswood Arms pub, whilst the bustling high streets of Banstead Village, Epsom and Reigate are all within a short drive.



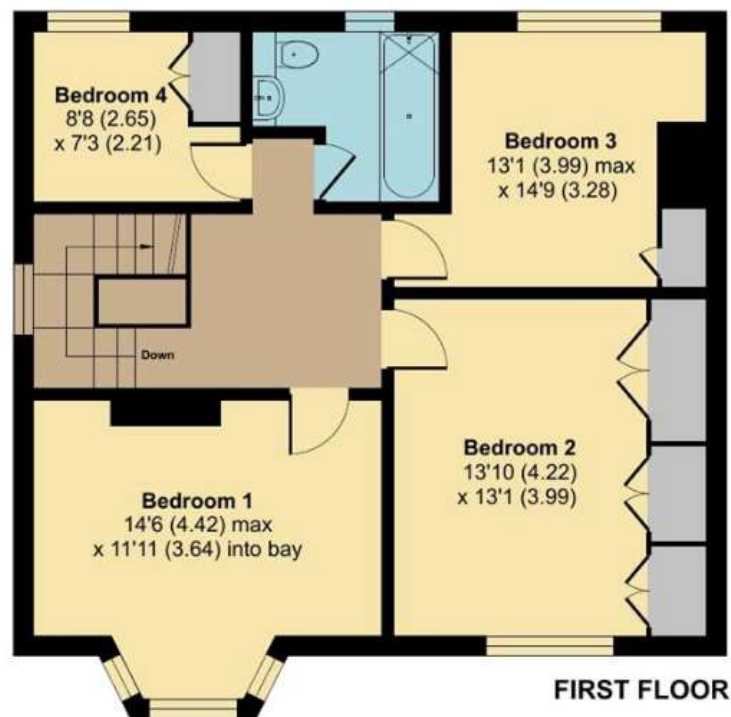
Semi-rural setting opposite the golf course | Mature, landscaped plot in excess of 0.3 acre | Three double bedrooms with further single bedroom | Open plan sitting - dining room with woodblock herringbone floor | Garage and off-street parking | Potential to extend and expand, subject to usual consents | Rear garden of some 150' | 1 mile walk to Kingswood station | Double-glazed throughout | Gas fired central heating





TOTAL FLOOR AREA

1,644 SQ FT / 152.6 SQ M



Tenure: Freehold

Local Authority: Reigate and Banstead Borough Council

Council Tax Band: F

All mains services

FFTP Broadband Available

To the best of our knowledge on production of this brochure

discover more at richardsaunders.co.uk



IMPORTANT NOTICE TO PURCHASERS: We endeavour to make our sales particulars accurate and reliable, however, they do not constitute or form part of an offer or any contract and none is to be relied upon as statements of representation or fact. The services, systems and appliances listed in this specification have not been tested by us and no guarantees as to their operating ability or efficiency are given. All measurements have been taken as guide to prospective buyers only, and are not precise. If you require clarification or further information on any points, please contact us, especially if you are travelling some distance to view.

Viewing
Please call us to arrange
a viewing appointment

1 Waterhouse Lane
Kingswood
01737 360000

2 High Street
Banstead
01737 363333

Residential Lettings
All Areas
01737 370700

SAUNDERS

richardsaunders.co.uk

