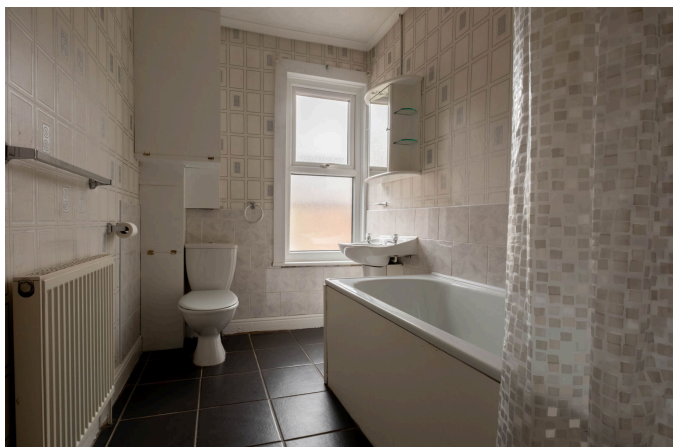


**11 Brewster Terrace,**  
£875PCM (Deposit: £1,009)

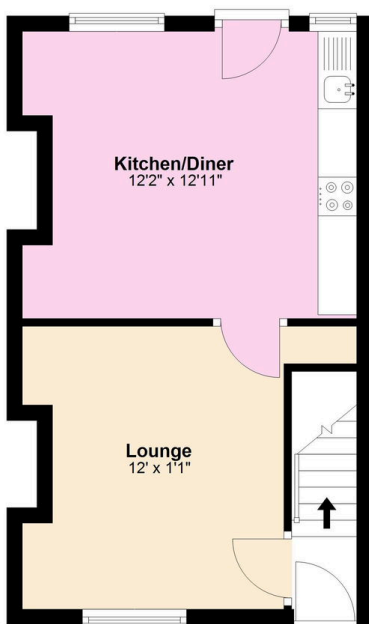
 2  1  2



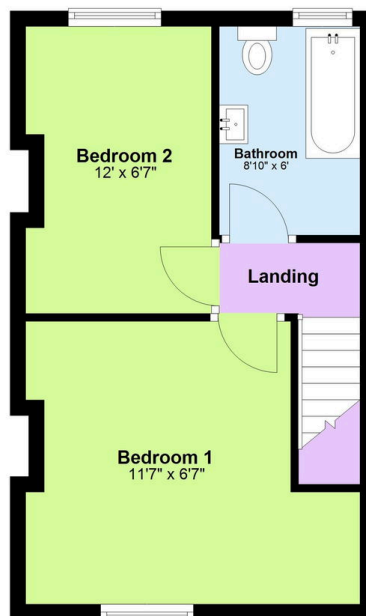
Tax Band: B Furnished:  
Not Specified

- Spacious Living Room: With a feature fireplace and neutral décor.
- Two Generously Sized Bedrooms: One large double and one good-sized single.
- Private Rear Yard/Garden: Ideal for relaxing or entertaining outdoors.
- Just a short walk into the beautiful market town of Ripon
- 
- Modern Kitchen: Fitted with contemporary units, and space for dining.
- Family Bathroom: Clean and stylish, with a modern suite including shower over bath.
- On-Street Parking: Readily available in this quiet residential street.
- New carpets to be fitted
- 

**Ground Floor**  
Approx. 333.7 sq. feet



**First Floor**  
Approx. 331.7 sq. feet



Total area: approx. 665.4 sq. feet

Whilst every attempt has been made to ensure the accuracy of the floor plan contained here, measurements of doors, windows, rooms and any other items are approximate and no responsibility is taken for any error, omission, or mis-statement. This plan is for illustrative purposes only and should be used as such by any prospective purchaser. The services, systems and appliances shown have not been tested and no guarantee as to their operability or efficiency can be given.  
Plan produced using PlanUp.

**11 Brewster Terrace, Ripon**

A charming period home revealing beautifully presented and well-proportioned accommodation, occupying a quiet 'cul-de-sac' backwater setting just moments from Ripon market place.

**01765 608203**

SOLO PROPERTY MANAGEMENT LTD

Visit our showroom at 13 Fishergate, Ripon, HG4 1EA

EMAIL

Info@solopm.com

www.solopropertymanagement.com

