

Beechwood, 24 Lark Hill Crescent, Ripon, HG4 2HN

£1,600PCM (Deposit: £1,846)

 3  1  1



Tax Band: D Furnished: Unfurnished

A highly attractive detached bungalow situated in an established and peaceful residential area. The versatile configuration, with well planned living space and three good size bedrooms, is complimented by the generous size level garden site with lawns, ample driveway parking and single garage. This delightful home has a lovely welcoming ambience and discerning tenants are sure to appreciate the versatile configuration and excellent standard of presentation.

APPLICATION INFORMATION. One weeks rent is payable to reserve a property which will then be deducted from the total rent and deposit requested. Properties will remain available until this is paid. On completing an application form on-line, you will need to provide identification (colour copy of passport, driver's licence and a utility bill). The completion and submission of an application form does not guarantee the offer of tenancy, this is subject to satisfactory references being obtained. A deposit equivalent to five weeks rent payable before the commencement of the Tenancy. The first month's rent and deposit must be paid before we will release the keys to the property. Applicants must show evidence of their contents insurance prior to the start of a tenancy. Payments can be made by bank transfer only. Personal cheques are not acceptable.

01765 608203

SOLO PROPERTY MANAGEMENT LTD
Visit our showroom at 3a Westgate, Ripon, HG4 2AT

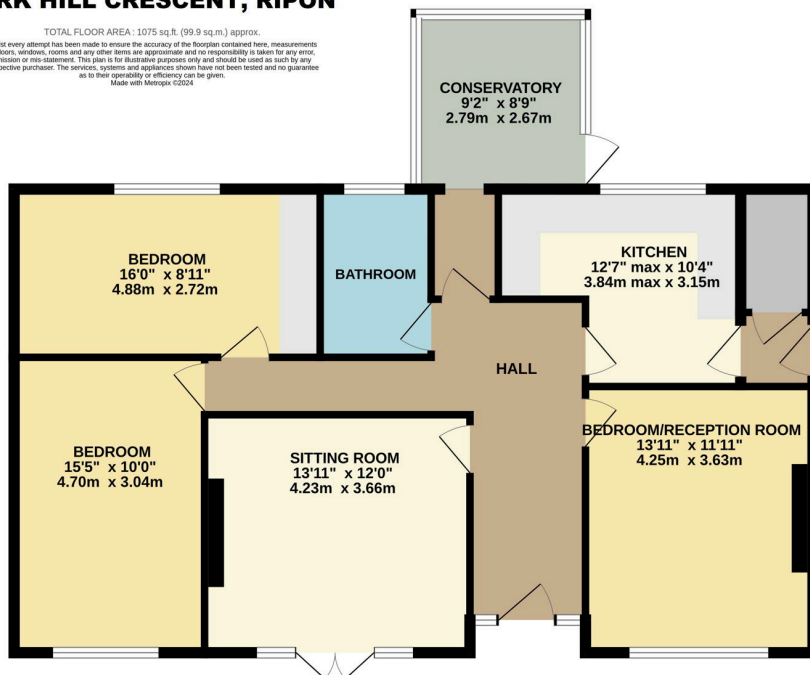
EMAIL
info@solopm.com www.solopropertymanagement.com



- Attractive Detached Bungalow
- Generous & Mature Garden Plot
- Superbly Presented & New Carpets
- Spacious, Flexible & Versatile
- Delightful, Level, Private Garden
- Prestigious & Tranquil Location
- Generous Proportions Throughout
- Three Excellent Double Bedrooms
- Long Gated Drive & Single Garage
- Edge of Ripon Near Countryside

LARK HILL CRESCENT, RIPON

TOTAL FLOOR AREA: 1075 sq. ft. (99.9 sq.m.) approx.
 Whilst every attempt has been made to ensure the accuracy of the floorplan contained here, measurements of doors, windows, rooms and any other items are approximate and no responsibility is taken for any error, omission or mis-statement. This plan is for illustrative purposes only and should be used as such by any prospective purchaser. The services, systems and appliances shown have not been tested and no guarantee as to their operability or efficiency can be given.
 Made with Metapix 12/2024



01765 608203

SOLO PROPERTY MANAGEMENT LTD

Visit our showroom at 3a Westgate, Ripon, HG4 2AT

EMAIL

info@solopm.com

www.solopropertymanagement.com

