


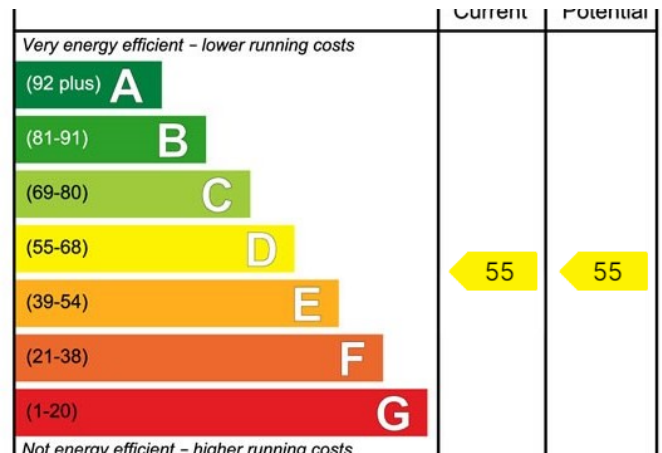


## Market Place West, Ripon, HG4 1BN

£950PCM (Deposit: £1,096)

 2  1  1



Tax Band: A Furnished: Unfurnished

A fabulous penthouse apartment occupying the prime top floor position in this imposing converted building in the centre of Ripon with a fantastic range of amenities literally on the doorstep. Created with great individual flair and thoughtful design, the light and spacious accommodation comprises open-plan living space with access to a stunning, west facing roof terrace, kitchen with integrated appliances, two bedrooms and shower room. A private car parking space is located in a gated carpark.

**APPLICATION INFORMATION** One weeks rent is payable to reserve a property which will then be deducted from the total rent and deposit requested. Properties will remain available until this is paid. On completing an application form on-line, you will need to provide identification (colour copy of passport, driver's license and a utility bill). The completion and submission of an application form does not guarantee the offer of tenancy, this is subject to satisfactory references being obtained. A deposit equivalent to five weeks rent payable before the commencement of the Tenancy. The first month's rent and deposit must be paid before we will release the keys to the property. Applicants must show evidence of their contents insurance

prior to the start of a tenancy. Payments can be made by bank transfer only. Personal cheques are not acceptable.

**01765 608203**

SOLO PROPERTY MANAGEMENT LTD

Visit our showroom at 3a Westgate, Ripon, HG4 2AT

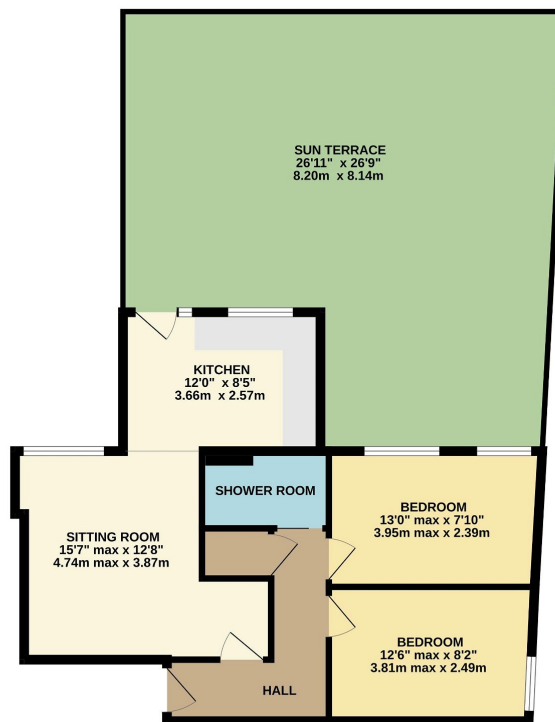
EMAIL

[info@solopm.com](mailto:info@solopm.com)

[www.solopropertymanagement.com](http://www.solopropertymanagement.com)



- Stunning Penthouse Apartment
- Quality Finishes & Features
- Kitchen with Integrated Appliances
- Stylish Shower Room
- Gated Allocated Parking
- Large Private Roof Terrace
- Bright Open-Plan Living Space
- Two Good Size Bedrooms
- Neutral Décor & Electric Heating
- Convenient Central Location



**The Penthouse, Burton Chambers**

Whilst every attempt has been made to ensure the accuracy of the floorplan contained herein, measurements of doors, windows, rooms and any other items are approximate and no responsibility is taken for any error, omission or mis-statement. This plan is for illustrative purposes only and should be used as such by any prospective purchaser. The services, systems and appliances shown herein have not been tested and no guarantee as to their operability or efficiency can be given.  
Made with Metropix C2024

**01765 608203**

SOLO PROPERTY MANAGEMENT LTD

Visit our showroom at 3a Westgate, Ripon, HG4 2AT

EMAIL

[info@solopm.com](mailto:info@solopm.com)

[www.solopropertymanagement.com](http://www.solopropertymanagement.com)

