




Allhallowgate, Ripon, HG4 1NY

£950PCM (Deposit: £1,096)

 3  2  1



Score	Energy rating	Current	Potential
92+	A		
81-91	B		
69-80	C	78 c	78 c
55-68	D		
39-54	E		
21-38	F		
1-20	G		

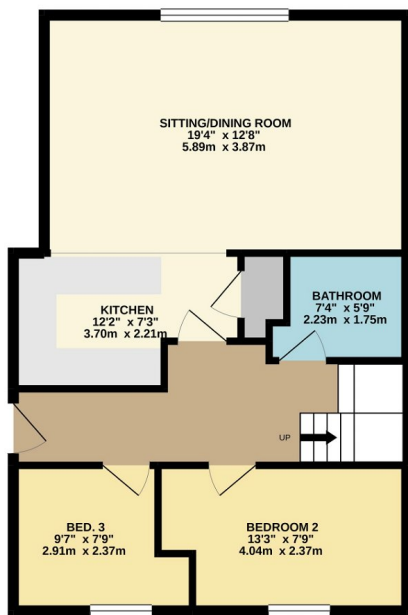
Tax Band: Furnished: Unfurnished

A most spacious duplex apartment located only a few moments from the bustling market place. The unusually generous proportions include fantastic open plan living space with a favourable southerly orientation and views over a small park towards Ripon cathedral. The three bedrooms offer great versatility and the property benefits from good storage and gas central heating. There is also an allocated car parking space in a secure underground garage.

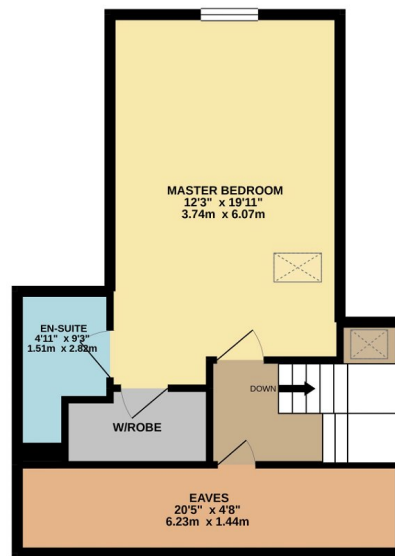
APPLICATION INFORMATION One weeks rent is payable to reserve a property which will then be deducted from the total rent and deposit requested. Properties will remain available until this is paid. On completing an application form on-line, you will need to provide identification (colour copy of passport, driver's license and a utility bill). The completion and submission of an application form does not guarantee the offer of tenancy, this is subject to satisfactory references being obtained. A deposit equivalent to five weeks rent payable before the commencement of the Tenancy. The first month's rent and deposit must be paid before we will release the keys to the property. Applicants must show evidence of their contents insurance prior to the start of a tenancy. Payments can be made by bank transfer only. Personal cheques are not acceptable.

- Open-Plan Living Space
- En-Suite Master Bedroom
- Gas Central Heating
- New Carpeting
- Secure Under-Croft Parking
- Three Bedrooms
- Neutral Décor
- Southerly Orientation
- City Centre Location
- Versatile Accommodation

GROUND FLOOR
645 sq.ft. (60.0 sq.m.) approx.



1ST FLOOR
459 sq.ft. (42.6 sq.m.) approx.



TOTAL FLOOR AREA : 1104 sq.ft. (102.6 sq.m.) approx.

Whilst every attempt has been made to ensure the accuracy of the floorplan contained here, measurements of floors, windows, rooms and any other items are approximate and no responsibility is taken for any error, omission or mis-statement. This plan is for illustrative purposes only and should be used as such by any prospective purchaser. The services, systems and appliances shown have not been tested and no guarantee as to their operability or efficiency can be given.
Made with Metropix ©2021

01765 608203

SOLO PROPERTY MANAGEMENT LTD

Visit our showroom at 3a Westgate, Ripon, HG4 2AT

EMAIL

info@solopm.com

www.solopropertymanagement.com

