



108 & 109 Century Buildings

St. Marys Parsonage | | Manchester | M3 2DE

Asking Price £2,400,000



108 & 109 Century

St. Marys Parsonage |

Manchester | M3 2DE

Asking Price £2,400,000

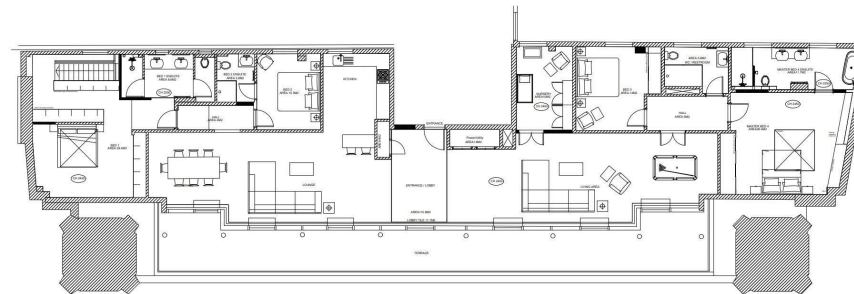
A rare opportunity to own one of the best apartments in Manchester in this iconic, grade II listed building! "The Penthouse", Century Buildings. A 5-bedroom Penthouse with two parking spaces.

The Good Estate Agency is delighted to present to market this stunning, five bedroom penthouse apartment in Manchester's most prestigious residential development, Century Buildings. Located opposite the tranquil Parsonage Gardens on the banks of the River Irwell, only a short walk to the city's main street Deansgate with all the shops, department stores, bars and restaurants the city centre has to offer.

- PENTHOUSE APARTMENT
- 1,000 SQ FT ROOFTOP TERRACE
- OVER 3,400 SQFT OF INTERNAL LIVING SPACE
- STUNNING CITY CENTRE VIEWS
- 2 VALET PARKING SPACES
- FIVE DOUBLE BEDROOMS
- SEVENTH FLOOR
- FOUR BATHROOMS INCLUDING THREE EN SUITES
- EXTREMELY SECURE BUILDING WITH 24/7 CONCIERGE
- EXCELLENT CENTRAL LOCATION



| Energy Efficiency Rating | | |
|---|---------|-----------|
| | Current | Potential |
| Very energy efficient - lower running costs | | |
| (92 plus) A | | |
| (81-91) B | | |
| (69-80) C | | |
| (55-68) D | | |
| (39-54) E | | |
| (21-38) F | | |
| (1-20) G | | |
| Not energy efficient - higher running costs | | |
| England & Wales | 73 | 75 |
| EU Directive 2002/91/EC | | |



68 Quay Street
Manchester
M3 3EJ

0161 513 2034
hello@thegea.co.uk
www.thegea.co.uk