



# 96(A) The Edge Apartments

Clowes Street | | Salford | M3 5ND

Asking Price £595,000





# 96(A) The Edge

Clowes Street |

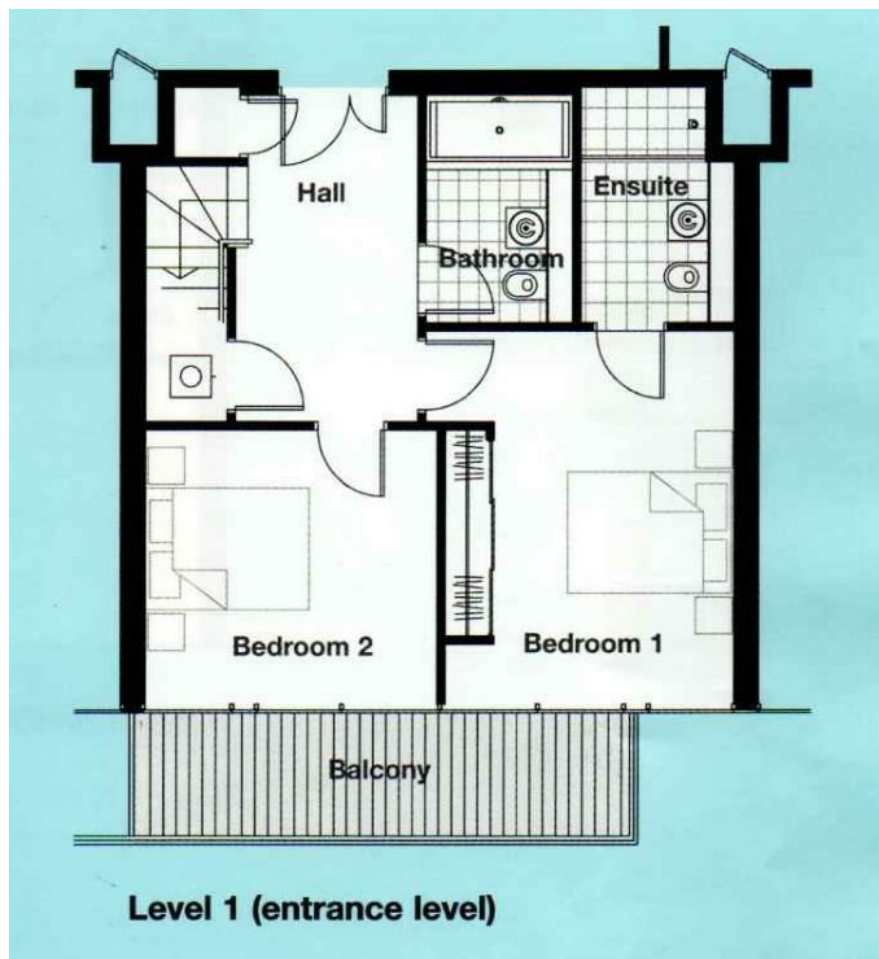
Salford | M3 5ND

Asking Price £595,000

Welcome to this stunning duplex apartment located at The Edge in Salford, offering a perfect blend of modern living and convenience. Spanning an impressive 1,153 square feet, this spacious residence features two well-appointed bedrooms and three stylish bathrooms, making it ideal for both families and professionals seeking a comfortable urban lifestyle.

As you enter the apartment you are greeted by a bright and airy reception room that provides a welcoming atmosphere for relaxation and entertaining. The highlight of this property is undoubtedly the large private roof terrace, which boasts breathtaking views of the river, offering a serene escape from the hustle and bustle of city life. Imagine enjoying your morning coffee or hosting gatherings with friends against this picturesque backdrop.

- 1,153 SQFT
- 13TH & 14TH FLOORS
- OPEN PLAN LIVING, DINING WITH MODERN KITCHEN
- OUTDOOR TERRACE
- 24 HOUR CONCIERGE
- DUPLEX 2 BEDROOM APARTMENT
- BATHROOM & EN SUITE TO MASTER BEDROOM
- CANADIAN WALNUT FLOORING
- SECURE ALLOCATED PARKING
- WALKABLE TO DEANS GATE



Energy Efficiency Rating		
	Current	Potential
Very energy efficient - lower running costs		
(92 plus) A		
(81-91) B		
(69-80) C		
(55-68) D		
(39-54) E		
(21-38) F		
(1-20) G		
Not energy efficient - higher running costs		
England & Wales	79	82
EU Directive 2002/91/EC		

68 Quay Street  
Manchester  
M3 3EJ  
0161 513 2034  
hello@thegea.co.uk  
www.thegea.co.uk