



# 42 Produce Exchange Building

Victoria Street | | Liverpool | L2 6QJ

Asking Price £95,000

The  
GOOD  
ESTATE  
AGENCY



# 42 Produce

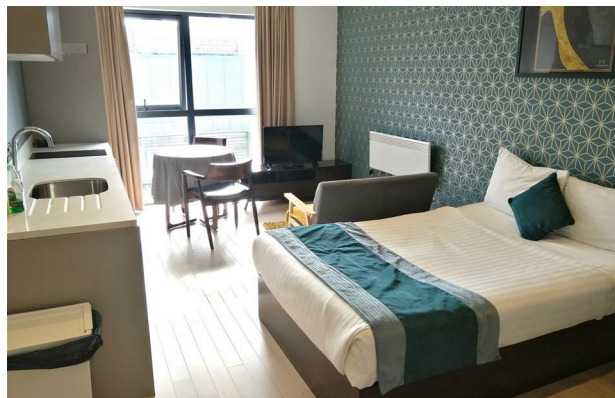
Victoria Street |

Liverpool | L2 6QJ

Asking Price £95,000

STUDIO APARTMENT. An excellent, modern studio apartment in a stunning period development, Produce Exchange Building. Located in the heart of Liverpool city centre and a UNESCO World Heritage site, close to all the city's major attractions and amenities.

- OPEN PLAN LIVING & BEDROOM
- FITTED KITCHEN
- 269 SQ FT
- ONE OF LIVERPOOL'S GREAT COMMERCIAL BUILDINGS
- HOUSE SHOWER ROOM
- 4TH FLOOR
- STUNNING PERIOD DEVELOPMENT
- LOCATED IN THE HEART OF LIVERPOOL CITY CENTRE



Energy Efficiency Rating		
	Current	Potential
Very energy efficient - lower running costs		
(92 plus) A		
(81-91) B		
(69-80) C		
(55-68) D		
(39-54) E		
(21-38) F		
(1-20) G		
Not energy efficient - higher running costs		
England & Wales		EU Directive 2002/91/EC

68 Quay Street  
Manchester  
M3 3EJ

0161 513 2034  
hello@thegea.co.uk  
www.thegea.co.uk