



152 The Edge Apartments

Clowes Street | | Salford | M3 5NE

£280,000



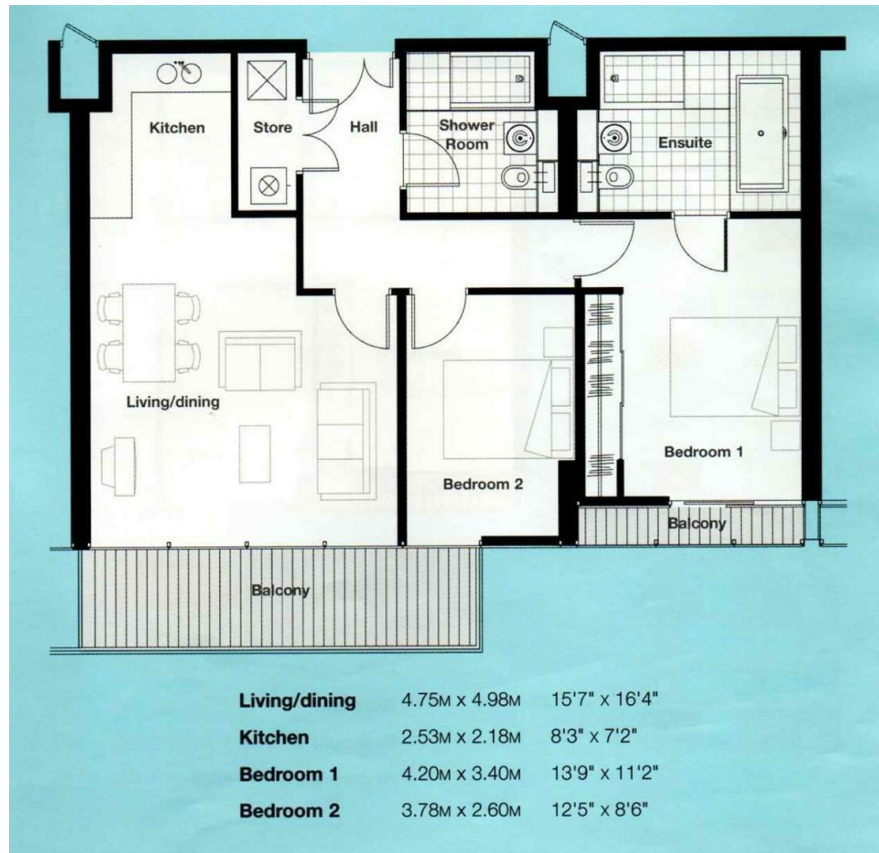
152 The Edge

Clowes Street |
Salford | M3 5NE
£280,000

SPACIOUS APARTMENT WITH PARKING. An excellent, two bedroom apartment totalling 844 sqft with garden views in one of the city centre`s most sought after developments, The Edge.



- 844 SQFT
- OPEN PLAN LIVING & DINING
- SECURE COVERED PARKING
- BALCONY
- COMMUNAL GARDEN
- TWO DOUBLE BEDROOMS
- MODERN FITTED KITCHEN
- 6th FLOOR
- PET FRIENDLY
- LOCATED CLOSE TO DEANS GATE



Energy Efficiency Rating		
	Current	Potential
Very energy efficient - lower running costs		
(92 plus) A		
(81-91) B		
(69-80) C		
(55-68) D		
(39-54) E		
(21-38) F		
(1-20) G		
Not energy efficient - higher running costs		
England & Wales	79	82
	EU Directive 2002/91/EC	

68 Quay Street
Manchester
M3 3EJ
0161 513 2034
hello@thegea.co.uk
www.thegea.co.uk