



Apartment 608, Block A, One Park West

Strand Street | | Liverpool | L1 8LN

£224,950



Apartment 608,

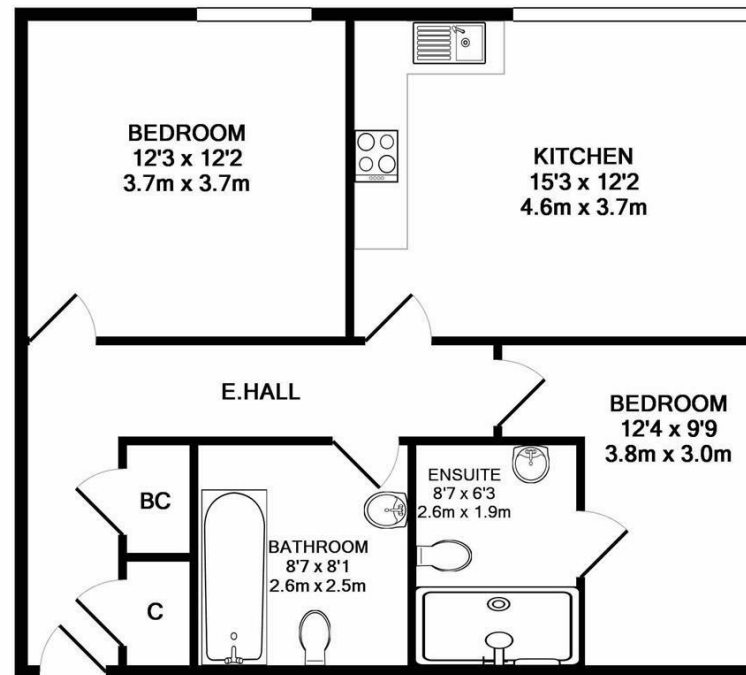
Strand Street |

Liverpool | L1 8LN

£224,950

*** CASH BUYER*** SPACIOUS TWO BEDROOM APARTMENT WITH PARKING. An excellent, 6th floor two bedroom apartment in the fashionable and highly sought after One Park West development. Located in Liverpool ONE, in the heart of the city centre and clearly signposted along all major routes into the city.

- TWO DOUBLE BEDROOMS
- OPEN PLAN LIVING
- ALLOCATED PARKING
- 6TH FLOOR
- OPPOSITE ALBERT DOCKS
- BATHROOM & EN SUITE
- FITTED KITCHEN
- 24 HOUR CONCIERGE & INTERCOM
- ELEVATOR ACCESS
- L1 LOCATION



Energy Efficiency Rating		
	Current	Potential
Very energy efficient - lower running costs		
(92 plus) A		
(81-91) B	79	79
(69-80) C		
(55-68) D		
(39-54) E		
(21-38) F		
(1-20) G		
Not energy efficient - higher running costs		
England & Wales	EU Directive 2002/91/EC	

TOTAL APPROX. FLOOR AREA 672 SQ.FT. (62.4 SQ.M.)

Whilst every attempt has been made to ensure the accuracy of the floor plan contained here, measurements of doors, windows, rooms and any other items are approximate and no responsibility is taken for any error, omission, or mis-statement. This plan is for illustrative purposes only and should be used as such by any prospective purchaser. The services, systems and appliances shown have not been tested and no guarantee as to their operability or efficiency can be given

Made with Metropix ©2019

68 Quay Street
Manchester
M3 3EJ

0161 513 2034
hello@thegea.co.uk
www.thegea.co.uk