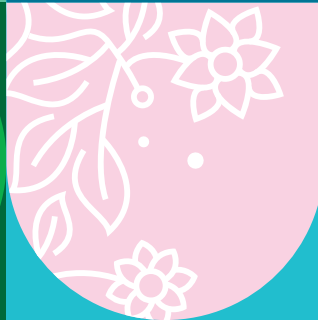


Planet
Croxley



Planet Croxley

Environmental Sustainability:

Zero Landfill since 2011

We here at Croxley Park have been at the forefront of sustainable business practices, proudly boasting a track record of zero waste landfill since 2011. In tandem with our waste reduction efforts, we have also embraced renewable energy solutions, harnessing the power of nature to fuel our operations since 2011 also.



Rainwater Harvesting

We are dedicated to implementing innovative solutions that promote environmental stewardship and sustainability. One such initiative is our rainwater harvesting system, operational in three of our prominent buildings. This practice not only conserves precious freshwater resources but also reduces strain on municipal water supplies.



Solar Photovoltaic (PV) Systems

We harness the power of the sun to drive sustainability forward with our Solar PV system. Through the installation of solar panels on our two newest buildings 1 & 2, we're paving the way for a greener, more sustainable future. Our solar PV system converts sunlight into electricity, providing a reliable source of renewable power to supplement our energy needs. By doing this, we're reducing our reliance on fossil fuels, lowering carbon emissions and mitigating the environmental impact of traditional energy generation methods.



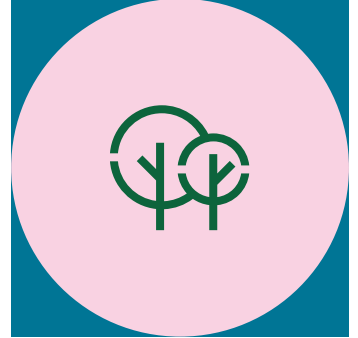
Cardboard Bailing

With our cardboard bailing initiative, we're taking proactive steps to reduce our environmental footprint and promote a circular economy. Our cardboard bailing process involves compacting and bailing cardboard waste generated across our premises.



Food Composting

Our on-site food composting programme ensures that organic waste generated on-site is diverted from landfills and instead transformed into nutrient-rich compost. By composting food scraps and other organic materials, we not only reduce methane emissions associated with landfill decomposition but also produce valuable soil amendments that support local agriculture and landscaping efforts.



Environmental Sustainability:

Clothes Swap

Want a chance to refresh your wardrobe sustainably? We host an annual clothes swap where you bring along your gently used clothes and accessories that you no longer wear and exchange them for something new-to-you. It's a win for both your wardrobe and the planet.



Food Bank Week

A week dedicated to supporting our community and those in need. Here, at Croxley Park, we believe in the power of compassion and community. We understand that many individuals and families in our neighborhood may be facing difficult times and we want to help an offering hand. We invite you to come along and contribute non-perishable food items such as canned goods, pasta, rice, cereal and other essential pantry items. Your donations will directly support families in need.



Drink Tokens for Good Deeds

Here, at Croxley Park, we offer an initiative whereby occupiers receive drink tokens for doing a good deeds. We recognize the importance of giving back and making a positive impact and want to rewards acts of goodwill. One example includes if you donate food items to our food bank, you will receive a drinks token of our appreciation. Another example is our Book Exchange Incentive on World Book Day which promotes literacy and a love for reading while encouraging recycling and reuse of books.



Spaces for Charity

We are proud to offer our beautiful barn venue and our sports field for free to host charity events. Here at Croxley Park, we believe in giving back and supporting noble causes. Whether you're organising a fundraiser, charity auction or a benefit concert, our barn and field provide the perfect setting to make a difference. Last year, we proudly supported numerous charities through our venues including Corona Energy using the Barn space for an Awareness Day to support Central Primary School. We also had Anthony Joshua come in and use our Field space to host a family fun day supporting Clean Herts Community. Plus many more!



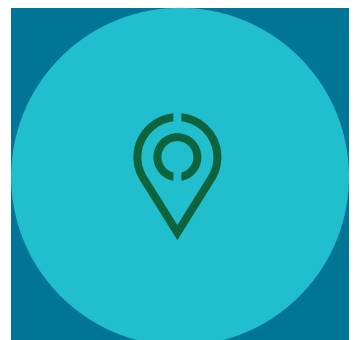
Local Business

We proudly support and invite local businesses to our café to set up stalls and sell their products! We have had esteemed brands such as Costco, Lush and hosted successful makeup sales providing a platform for businesses to thrive and connect with customers. Supporting local enterprises fosters economic sustainability, strengthens community ties and promotes ethical business practices.



Local Suppliers

Within our event planning, we prioritize community engagement, which is why we proudly feature local street food traders and local equipment suppliers at our gatherings. Integrating local suppliers not only enriches the culinary experience to our visitors but also promotes economic growth within the community and support local businesses.



Swapping & Donating

We at Croxley Park use our engagement network to help tenants/the community swap and exchange furniture and equipment. Through this initiative, we power individuals to repurpose and recycle items, promoting a circular economy and reducing waste. Furthermore, as part of our commitment to social responsibility, we facilitate donations of furniture and equipment to local schools, enhancing learning environments and supporting educational initiatives. Furniture including desks, chairs, whiteboards & pedestals have been donated from some of our buildings to local primary and secondary schools.



Events Programme

We stand as a vibrant hub of community engagement, hosting a multitude of events throughout the year - over 50% of them open to the wider community. These events include Fireworks, Summer Fetes, Easter Activities & more! Integral to our events programme is our dedication to supporting charitable causes where we encourage donations. Throughout 2023, we asked for donations for Herts Young Homeless to support an important cause! A large number of our events also include wellbeing and educational events within our programme - starting off in January 2024 with our 'Nourish your Knowledge' event series.



Empowering Futures

Here, at Croxley Park, we believe in the power of education and the importance of investing in the next generation of talent. That's why we are actively working with schools and colleges to promote those that require apprenticeship places and work experience placements. We work directly with West Herts College to link our occupiers with local employment and training opportunities. Recognizing the value of hands on-experience and practical learning, we are committed to providing young individuals with pathways to develop essential skills and kick start their careers.



Annual Macmillan Bake Sale

We proudly host an annual Macmillan Bake Sale, a cherished event that brings together our community for a meaningful cause. The MacMillan Bake Sale serves as a powerful platform for raising funds and awareness in support of those affected by cancer. Each year, our tenants, employees and visitors come together to showcase their baking talents and indulge in an array of delicious treats.



Sustainable Practices

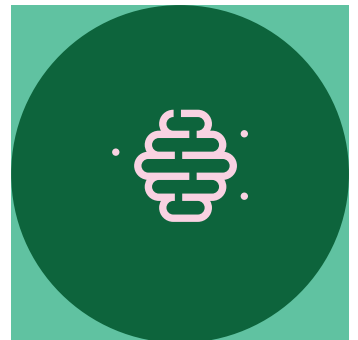
Baxter Story – The Hive Café

Baxter Story at the Hive Café are committed to ensuring that every aspect of their business is conducted in a professional and ethical manner whilst ensuring compliance to all relevant legal standards and social expectations. Baxter Story have a strong commitment to health & safety, their staff ensuring they provide the opportunity to develop and advance. Also the environment, where they are committed to minimising the impact of their operations on the environment by promoting environmentally responsible practices throughout their business. Baxter Story also have a good sense of community as they work hard in partnership with the communities in which they operate and actively encourage their employees to take part of their Employee Volunteering programme.



Croxley Bees & Honey

6 Bee hives are located at the Sports Field. Events are run annually inviting employees to 'Get up close and Personal' to the Bees finding out what goes on within the Hive under the watchful eye of our Bee Keeper. The Honey Harvest towards the end of the year is attended by a local junior school, who help the Beekeeper extract the frames from the hives. The harvested Honey is then processed by our Beekeeper placed into ½ lb jars and sold to Park Employees.



Transport

Bus - As part of our commitment to reducing carbon footprint, we provide a complimentary shuttle bus service to our occupiers. By offering this eco-friendly transportation option, we aim to minimize the reliance on individual cars, alleviate traffic congestion and lower emissions. Also a massive perk for those trying to save on money!

Car Share – We also offer a convenient car share scheme to our occupiers. By joining our car share programme, occupiers can connect with fellow colleagues and neighbours, reducing the number of cars on the road and cutting down on emissions.

EV Charging Points – As the world shifts towards sustainable energy solutions, we recognise the importance of supporting electric vehicle solutions. Our EV Charging points provide convenient and accessible charging options for both employees and visitors, encouraging the adoption of eco-friendly transportation with up to 38 charging points on site.



Cycling & Scooting

Beryl Bikes - We are now home to a Beryl Bike station. These bikes are dotted all over Watford and are accessed by the Travel Watford App. The bike station is located near the Building 2 and is available all year round.

Bike Shelters - We provide secure and convenient bike shelters throughout the premises. These bike shelters serve as a testament to our dedication to fostering a greener, healthier community while also addressing the needs of modern commuters.

Borrow a scooter - Discover the Croxley Park and surroundings on two wheels. Get away from your desk. Crush your commute. Banish the blues! A proven way to get fitter, feel better and be good to the planet. You can find our Micro-Scooters in the Park Management Suite, simply show your cycle pass, sign it off and you are free to ride.



Events Programme

We stand as a vibrant hub of community engagement, hosting a multitude of events throughout the year - over 50% of them open to the wider community. These events include Fireworks, Summer Fetes, Easter Activities & more! Integral to our events programme is our dedication to supporting charitable causes where we encourage donations. Throughout 2023, we asked for donations for Herts Young Homeless to support an important cause! A large number of our events also include wellbeing and educational events within our programme - starting off in January 2024 with our 'Nourish your Knowledge' event series.



Communal Veg Beds

We have six veg beds available for our community members and occupiers to cultivate their own produce. From this, we offer a unique opportunity for individuals to harvest their own fresh, organic produce.



Crafted Kitchen Veg Bed

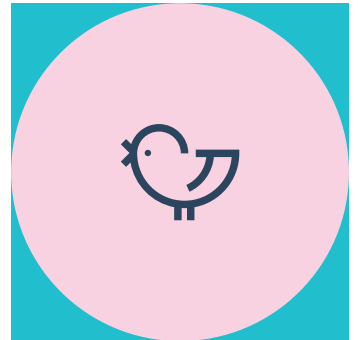
We have a large veg bed for our Crafted Kitchen Café. The Crafted Kitchen grows its own herbs, spices and garnishes and by sourcing ingredients directly from our on-site garden. In doing this, we are reducing our carbon-footprint by eliminating the need to transport herbs and spices over long distances. Due to this, we are reducing greenhouse gas emissions associated with transportation and distribution networks.



Wildlife Oasis

Through a comprehensive approach to wildlife conservation and habitat enhancement, we have established a haven for biodiversity within our park grounds. Our commitment is evident through a diverse range of features including:

- **Duck House & Platform** – They serve as welcoming sanctuaries for waterfowl, providing safe spaces for nesting and resting.
- **Bug Hotel** – An innovative structure designed to mimic natural habitats, provides shelter for beneficial insects and pollinators, fostering ecological balance and promoting biodiversity.
- **Bird Feeders & Boxes** – Our bird feeders attract a variety of avian species, enriching the park's ecosystem and providing opportunities for wildlife observation and appreciation.
- **Bat Boxes** – Offer a roosting site for bats, essential allies in natural pest control and biodiversity conservation.



Corporate Governance and Social Responsibility

Chamber of Commerce at Croxley Connect

Here at Croxley Park, we host a series of quarterly networking events called Croxley Connect in collaboration with the Chamber of Commerce. As a thriving business community, we recognise the importance of fostering meaningful connections and facilitating opportunities for professional growth and collaboration. Croxley Connect provides a platform for local businesses to come together, share insights and forge meaningful relationships.



EPC

We are committed to continuous improvement in sustainability and energy efficiency across our entire portfolio of buildings. As part of this commitment, we actively review and update our Energy Performance Certificate (EPCs) to identify areas of enhancement and implement strategies to reduce energy consumption and environmental impact.

