



12 Forge End • Weston • Hitchin • Hertfordshire • SG4 7AQ

Guide Price £475,000

Charter Whyman

TOWN & VILLAGE HOMES











## DECEPTIVELY SPACIOUS MODERN HOME

### FINE GARDEN ROOM

### PLEASANT VILLAGE LOCATION

#### THE PROPERTY

A very pleasant surprise awaits anyone entering this modern semi: not only is it much more spacious than you would anticipate, but it has also been given a great sense of style by its current owners. The skillful and extensive use of panelling has enhanced this attractive home with individual character. The well-proportioned sitting room opens to a versatile garden room and is complemented by the kitchen/dining room. A cloakroom/WC completes the ground floor. There are three bedrooms and a bathroom on the first floor. The master bedroom has its own en suite shower room.

The house is of insulated cavity construction under a pitched tiled roof and benefits from uPVC double-glazed windows and gas fired central heating.

#### THE OUTSIDE

The house stands in a plot measuring some 65' by 33' (19.95m x 10m) overall and adjoins greenbelt. There is a parking space to the front with an EV charging point.

The compact split-level rear garden was very imaginatively re-landscaped in 2022 with areas of decking and artificial lawn, a gazebo with electric heater, built-in barbecue kitchen area and downlighting. Timber garden shed.

#### THE LOCATION

Standing at the head of Forge End, which is a peaceful residential close in the heart of the popular village of Weston and within its Conservation Area, the house is just a quarter of a mile from the village stores/post office and only a third of a mile from the primary school.

Weston is an attractive and very highly regarded village just 4 miles from the centre of Letchworth Garden City, 6 miles from the centre of Hitchin and 5 miles from the centre of Stevenage. Junction 9 on the A1 (M) is less than 2 miles away. Weston is a thriving community and exceptionally served by a village shop/Post Office, pub, the primary school, parish church (all within half-a-mile) and numerous sports clubs and their facilities.

Letchworth Garden City, Stevenage and Hitchin all afford a wide range of shops, schools, pubs, restaurants, leisure facilities and places of worship. Each also has a mainline railway station with the fastest train services to London Kings Cross taking 29 minutes from Letchworth and, best of all, 23 minutes from Stevenage.





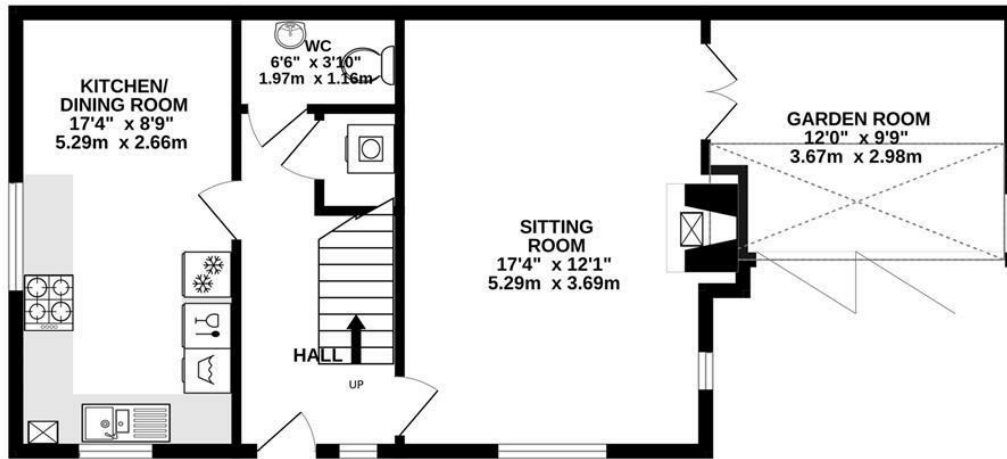




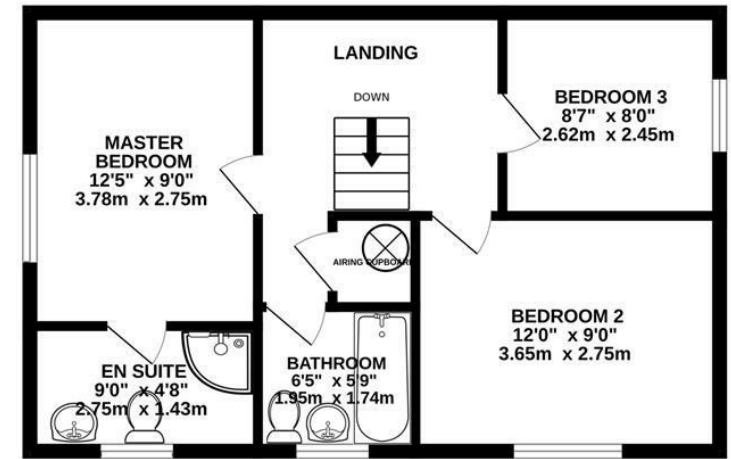




GROUND FLOOR  
584 sq.ft. (54.3 sq.m.) approx.



1ST FLOOR  
474 sq.ft. (44.0 sq.m.) approx.



TOTAL FLOOR AREA : 1058 sq.ft. (98.3 sq.m.) approx.  
Made with Metropix ©2025

These particulars are intended for guidance only. Floor Plan measurements and placement of white goods etc are approximate and are for illustrative purposes only. Whilst we do not doubt the accuracy of the floor plan or any other information provided, we make no guarantee, warranty or representation as to this accuracy or the completeness of these particulars. You or your advisors should conduct a careful, independent investigation of the property to determine to your satisfaction that it is suitable for your requirements.

Charter Whyman

TOWN & VILLAGE HOMES





## TENURE

FREEHOLD

## COUNCIL TAX

Band - D

## EPC RATING

Band - D

## SERVICES

MAINS water, sewerage, gas and electricity are connected to the property.

BROADBAND: A choice of providers with claimed download speeds of up to 1,800 Mbps.

MOBILE SIGNAL: Most providers claim up to 4G coverage, some providers claim to provide 5G.

## LOCAL AUTHORITY

North Herts District Council

Gernon Road

Letchworth Garden City

Hertfordshire SG6 3BQ

Tel: 01462 474000

[www.north-herts.gov.uk](http://www.north-herts.gov.uk)

## VIEWING APPOINTMENTS

All viewing and negotiations strictly through Charter Whyman.



## Charter Whyman

37 Station Road, Letchworth Garden City, Hertfordshire, SG6 3BQ

01462 685808

[www.charterwhyman.co.uk](http://www.charterwhyman.co.uk)