



RICHMOND COURT RICHMOND DALE,  
CLIFTON, BS8 2UX

---

GOODMAN  
& LILLEY



# A GENEROUSLY SIZED TWO BEDROOM, PURPOSE BUILT APARTMENT WITH RESIDENTS CAR PARK IN CLIFTON, ONE OF BRISTOL'S PRIME CENTRAL LOCATIONS.

## Location

The apartment is conveniently located near Bristol University, BRI, the City Centre, The Downs, and Whiteladies Road, offering a wide range of amenities including bars, cafés, restaurants, essential services, and excellent public transport links—both bus and train—into the city.

## Summary of Accommodation

Richmond Court is a smart purpose-built block of modern apartments tucked away in a quiet location within a few hundred metres of the downs and Blackboy Hill. The accommodation comprises a communal entrance hall with entry phone system that provides access to the apartments main entrance door. Once inside the hallway has a built storage cupboard and doors to all rooms. The sitting / dining room is over 19 ft in length with ample space for both sitting and dining areas, and a door to the modern fitted kitchen with window. The two double bedrooms are of good proportions and the apartments has a modern bathroom. Additional benefits include first come, first served parking to the rear

## Outside / Parking

Additional benefits include a gated first come, first served car park to the rear of the building.

## Additional Information

LEASE DETAILS TBC  
Managed by BNS Management Services Ltd  
Management Co. Fee £400.34 every quarter (1/4/25 - 31/3/26)  
Ground Rent £25  
EPC Rating D  
Council Tax Band C

- Superb Clifton Location
- Purpose Built Apartment
- Two Double Bedrooms
- Communal Car Parking

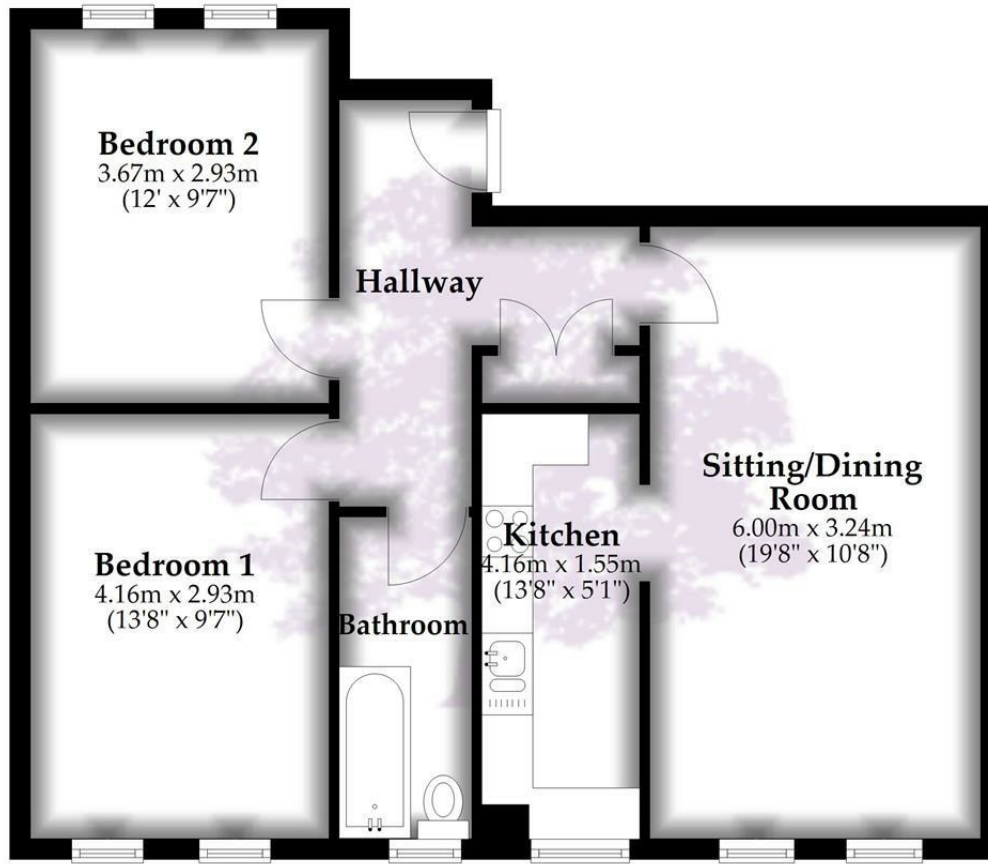


GUIDE PRICE £400,000





# Floor Plan



Total area: approx. 63.3 sq. metres (680.9 sq. feet)

Whilst every attempt has been made to ensure accuracy of the floor plan all measurements are approximate and no responsibility is taken for any error, omission or measurement.

Plan produced using PlanUp.

**HENLEAZE** - 0117 2130777  
henleaze@goodmanlilley.co.uk

**PORTISHEAD** - 01275 430440  
sales@goodmanlilley.co.uk

**SHIREHAMPTON** - 0117 2130333  
shire@goodmanlilley.co.uk

Zoopla.co.uk

rightmove



**WWW.GOODMANLILLEY.CO.UK**

These particulars are for general guidance only. They do not form or constitute any part of an offer or contract. Goodman & Lilley has not carried out structural surveys of the property. The services, appliances or specific fittings mentioned in these details have not been tested. Every attempt is made to ensure accuracy, however all photographs, measurements, floor plans and distances are for illustrative purposes only. They must not be relied upon when purchasing carpets and or other fixtures & fittings. Lease details, service charges and ground rents are given as a guide only. They should be checked and confirmed by a licensed solicitor prior to exchange of contracts. The copyright of all details, photographs and floor plans remain exclusive to Goodman & Lilley.