



THE BUNGALOW PILL ROAD,
ABBOTS LEIGH, BS8 3RE

GOODMAN
& LILLEY







THE BUNGALOW PILL ROAD

ABBOTS LEIGH BS8 3RE

GUIDE PRICE
£925,000

We are delighted to offer an exciting and very rare opportunity to acquire a newly built detached four bedroom bungalow with it's own paddock in a quiet position, away from the road, in the ever popular BS8 village of Abbots Leigh. Finished towards the end of 2022 to a high contemporary spec, offered to the market with vacant possession and no chain.

Location

The property is positioned on the edge of the village accessed at the bottom of a private lane behind one neighboring property and surrounded by delightful open countryside. There is great access to both Bristol and the south west of England from this location.

The property is approached down a private drive to a parking area.

Summary Of Accommodation

When entering the property you are greeted by a vast entrance hallway with doors providing immediate access to all four of the bedrooms (master with en-suite) and the family bathroom. The living accommodation is all open plan and affords attractive views over the rear garden and the large paddock beyond, making this a fantastic space to relax and unwind, but also is ideal for those who enjoy entertaining. The kitchen area is tucked around the right hand side of the space and boasts plenty of storage space, built on Bosch appliances complete with an island with electric oven and induction hob. The dining area and living space flow into the kitchen area perfectly and there is plenty of natural light flooding the space and bi-folding doors opening directly to the rear garden and paddock beyond.

Gardens

There is a good amount of land on offer with this home including front and rear gardens and a paddock beyond to the rear.

Driveway and Parking

- Newly Built Detached Bungalow
- Four Good Sized Bedrooms (Master With En-Suite)
- Large Open Plan (33ft x 30ft) Living/Dining Space
- Into An Open Plan Kitchen Area Complete With Island Unit
- Family Bathroom WC
- Situated Along It's Own Private Lane
- Front Garden With Parking Bay
- Rear Garden
- Sizable Paddock Beyond
- Delightful Countryside Surrounding





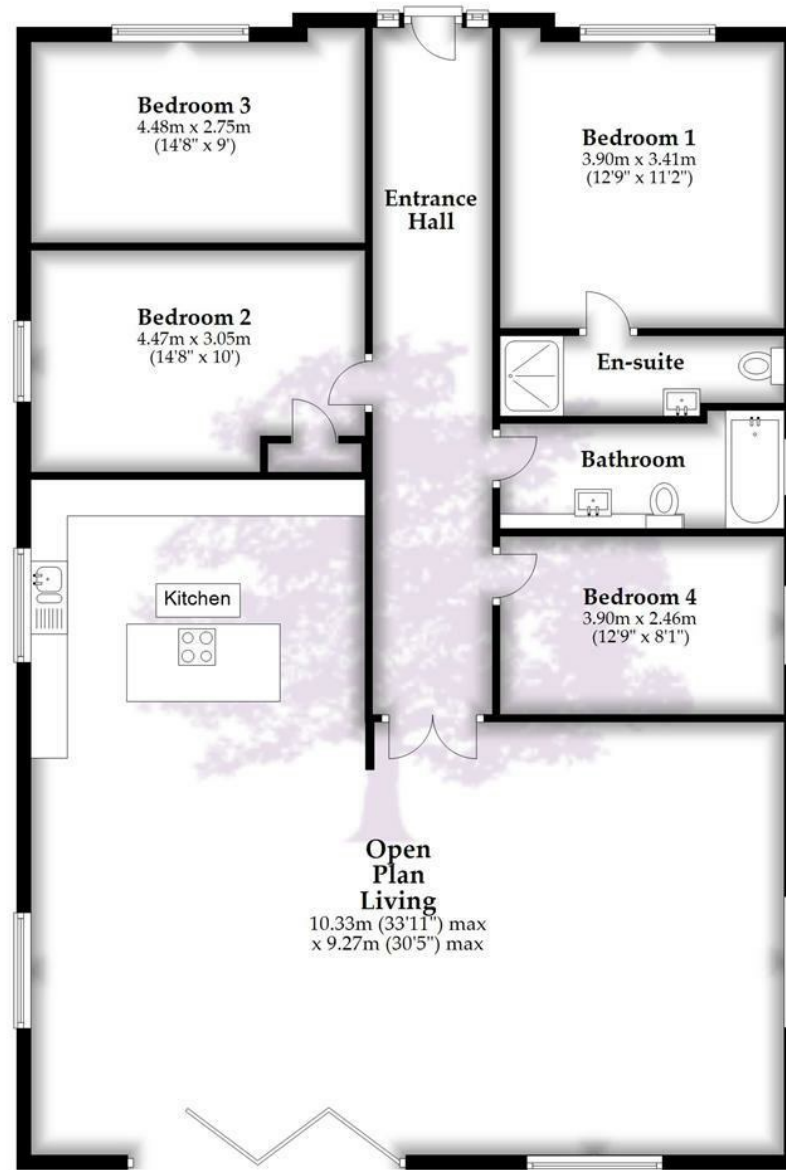


GOODMAN
& LILLEY



Floor Plan

Approx. 158.4 sq. metres (1704.9 sq. feet)



Total area: approx. 158.4 sq. metres (1704.9 sq. feet)

Whilst every attempt has been made to ensure accuracy of the floor plan all measurements are approximate and no responsibility is taken for any error, omission or measurement.

Plan produced using PlanUp.

HENLEAZE

156 Henleaze Road
Henleaze BS9 4NB
henleaze@goodmanlilley.co.uk

0117 213 0777

PORTISHEAD

36 High Street
Portishead BS20 6EN
sales@goodmanlilley.co.uk

01275 430 440

SHIREHAMPTON

9 High Street
Shirehampton BS11 0DT
shire@goodmanlilley.co.uk

0117 213 0333

LETTINGS

lettings@goodmanlilley.co.uk

01275 299 010

0117 213 0101

LAND & NEW HOMES

156 Henleaze Road
Henleaze BS9 4NB
LNH@goodmanlilley.co.uk

0117 213 0151



These particulars are for general guidance only. They do not form or constitute any part of an offer or contract. Goodman & Lilley has not carried out structural surveys of the property. The services, appliances or specific fittings mentioned in these details have not been tested. Every attempt is made to ensure accuracy, however all photographs, measurements, floor plans and distances are for illustrative purposes only. They must not be relied upon when purchasing carpets and or other fixtures & fittings. Lease details, service charges and ground rents are given as a guide only. They should be checked and confirmed by a licensed solicitor prior to exchange of contracts. The copyright of all details, photographs and floor plans remain exclusive to Goodman & Lilley.



rightmove

Zoopla