



170 Longley Road, Chichester PO19 6EA

£305,000 Leasehold



2 Bedrooms



1 Bathroom



1 Reception Room

Sw

Sims Williams

Key Features

- First Floor Apartment
- Converted Victorian Building
- No Onward Chain
- Open Plan Living Space
- Contemporary Fitted Kitchen
- 2 Bedrooms
- Modern Bathroom Suite
- Beautiful Communal Grounds
- Dedicated Parking Space

EPC Rating

Current = C

Potential = C

Council Tax Band

Band = C

Tenure - Leasehold

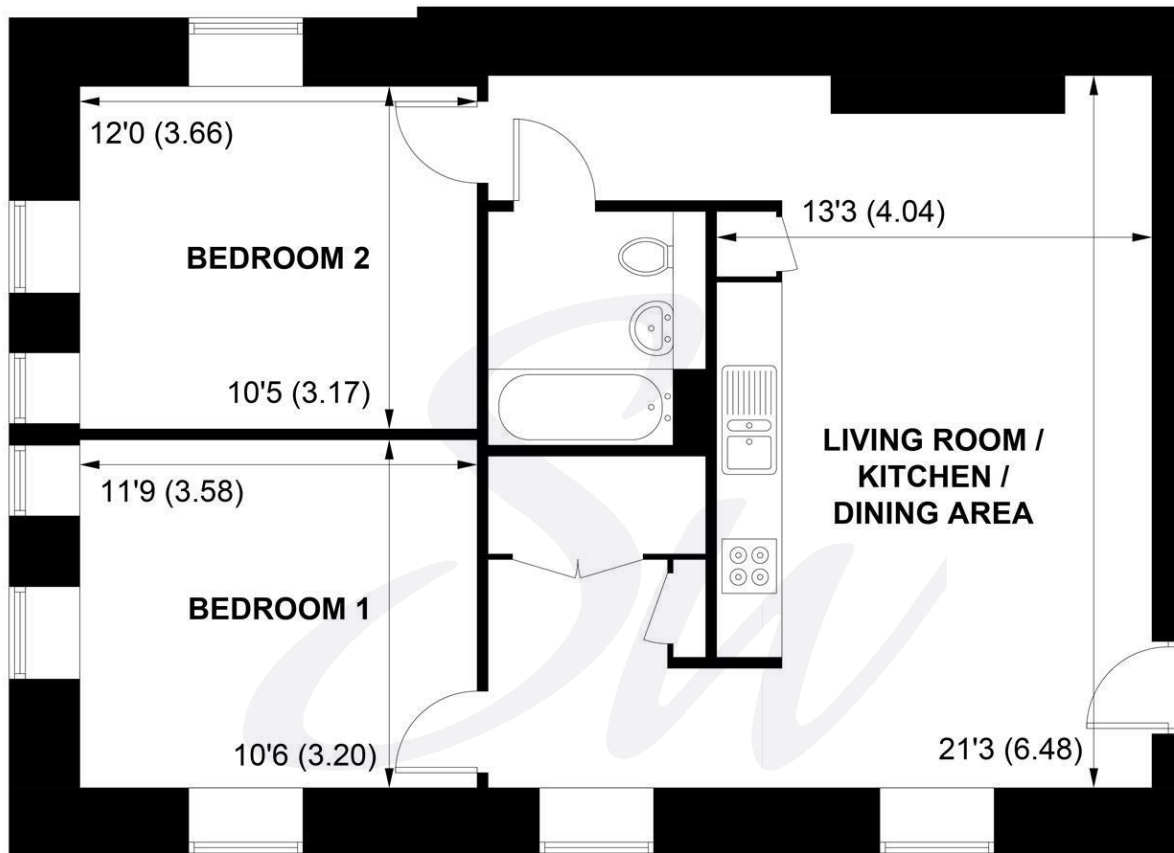
Length of Lease: 150 years

Years Remaining: 135 years

Ground Rent: £0.00

Service Charge: £2,072.01 p.a.





APPROXIMATE GROSS INTERNAL AREA = 692 SQ FT / 64.3 SQ M

**NOT TO SCALE (For illustrative purposes only as defined by RICS Code of Measuring Practice) 2025 ©
Produced for Sims Williams**



simswilliams.co.uk

CHICHESTER

8-9 Southgate

Sales 01243 787868

Lettings 01243 836055

chichester@simswilliams.co.uk

WALBERTON

5 Maple Parade

Sales 01243 551368

Lettings 01243 836055

walberton@simswilliams.co.uk

ARUNDEL

8a High Street

Sales 01903 885678

Lettings 01903 881133

arundel@simswilliams.co.uk

BOGNOR REGIS

46 High Street

Sales 01243 862626

Lettings 01243 836055

bognor-regis@simswilliams.co.uk

Viewing Strictly by arrangement via the vendor's agent Sims Williams 01243 787868. These particulars are believed to be correct but their accuracy is not guaranteed and they do not form part of any contract.