

SW

Sims Williams



APRIL COTTAGE, FAIRFIELD ROAD, BOSHAM, WEST SUSSEX, PO18 8JH




April Cottage, Fairfield Road, PO18 8JH

Approximate Gross Internal Area = 119.8 sq m / 1289 sq ft

Garage = 14.0 sq m / 151 sq ft

Total = 133.8 sq m / 1440 sq ft



 = Reduced headroom below 1.5m / 5'0"

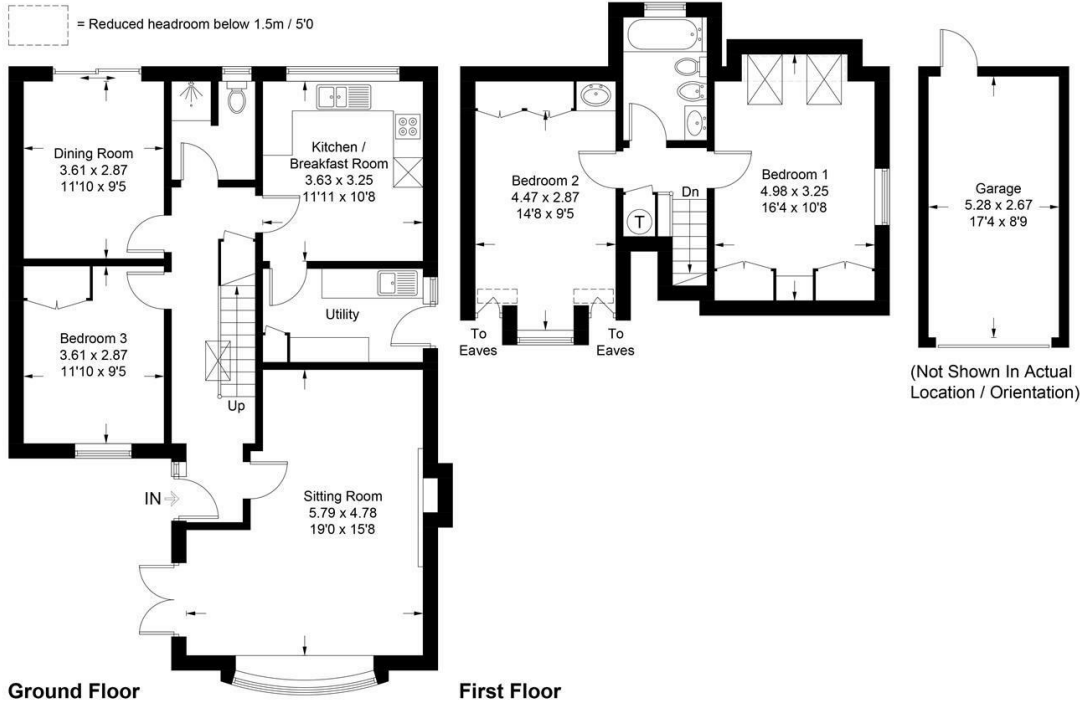


Illustration for identification purposes only, measurements are approximate, not to scale. floorplansUsketch.com © (ID1091993)

£750,000 Freehold

APRIL COTTAGE,
FAIRFIELD ROAD, BOSHAM,
WEST SUSSEX, PO18 8JH

- Detached Chalet Bungalow
- Sitting & Dining Room
- Kitchen/Breakfast Room
- Utility Room
- Ground Floor Bedroom & Shower Room
- 2 First Floor Bedrooms & Bathroom
- Delightful Gardens
- Garage & Driveway
- Close to Harbour

EPC RATING

Current = C

Potential = B

COUNCIL TAX BAND

Band = F

This delightful detached chalet bungalow, which lies close to the harbour, has flexible accommodation throughout.

The entrance hall has stairs to the floor and doors to the sitting room with an open fireplace which has a cast iron gas 'log burning' stove.

There is a fitted kitchen/breakfast room with a door to a separate utility room with door to the side of the property.

The dining room has a door to the rear garden and there is a ground floor bedroom and shower room.

On the first floor there are 2 double bedrooms and a bathroom.

Outside the delightful rear gardens are enclosed within a part fenced and hedged boundary with access to the front courtyard and garden.

There is a large single garage with an up and over door which has power and light and a personal door leading from the courtyard.

Disclaimer

As the seller's agent we are not surveyors or conveyancing experts and as such we cannot and do not comment on the condition of the property or issues that may affect this property, unless we have been made aware of such matters. Interested parties should employ their own professionals to make such enquiries before making any transactional decisions.



