



2

Bedrooms

1

Bathroom



ings are pleased to market this 2 bedroom 1st floor apartment on
Kepwick Road in the very sought after Hamilton, LE5 area. CALL KINGS
NOW TO ARRANGE YOUR VIEWING 0116 352 7012!!!

Kings are pleased to market this 2 bedroom 1st floor apartment on Kepwick Road in the very sought after Hamilton, LE5 area. Upon entering the property you are welcomed into the open plan living/dining area that is also open plan with the fitted kitchen area. Proceeding ahead the apartment consists of 2 double bedrooms and family bathroom. This apartment is perfectly located in a quiet residential area close to schools, local amenities and major bus stops. CALL KINGS NOW TO ARRANGE YOUR VIEWING 0116 352 7012!!!

Leasehold Details -

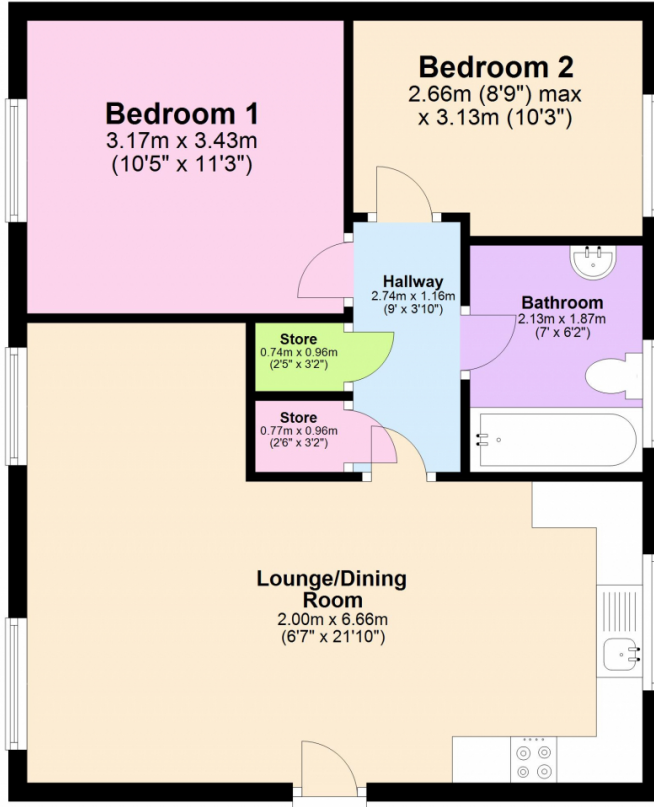
Lease Length: 125 years from 2007 (103 years remaining)

Ground Rent: £117.55

Service Charge £2004.68:

Ground Floor

Approx. 55.0 sq. metres (591.9 sq. feet)



Total area: approx. 55.0 sq. metres (591.9 sq. feet)

Energy Efficiency Rating		
	Current	Potential
Very energy efficient - lower running costs		
(92+) A		
(81-91) B		
(69-80) C	74	81
(55-68) D		
(39-54) E		
(21-38) F		
(1-20) G		
Not energy efficient - higher running costs		
England, Scotland & Wales		EU Directive 2002/91/EC

Address: Apartment 4, Kewick Road, Leicester, LE5

