



Westley Road, Acocks Green, B27 7UW

NEWMAN
SALES & LETTINGS

Westley Road

Acocks Green

Offers Over £310,000

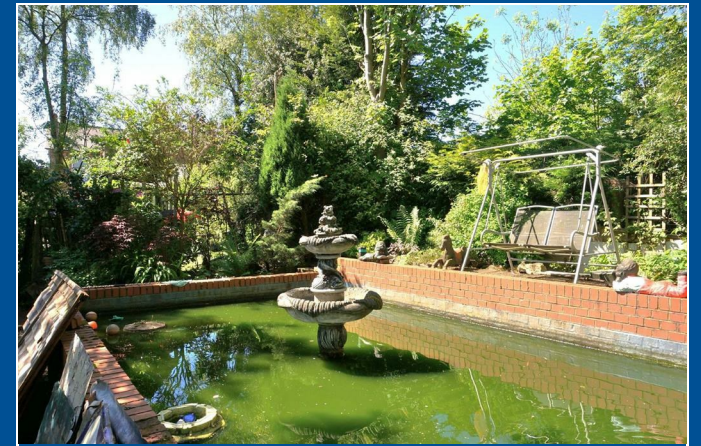
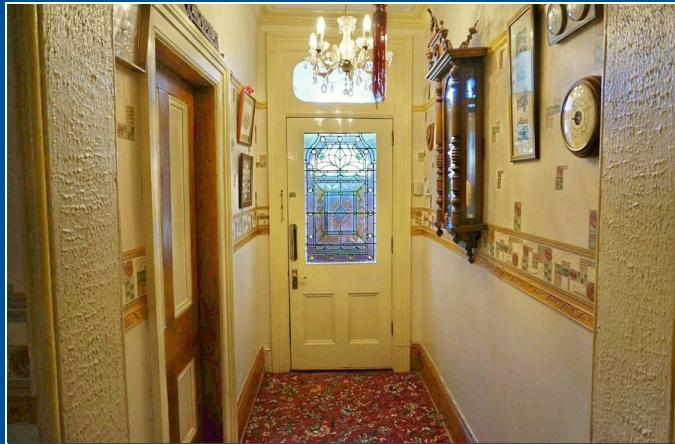
A delightful Victorian 4 bedroom semi-detached villa with many original features. Acocks Green Village is situated a few hundred yards away providing access to shopping centre, bus and train and commuting links.

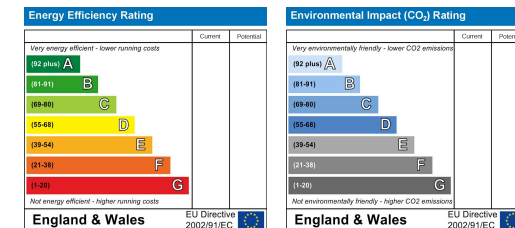
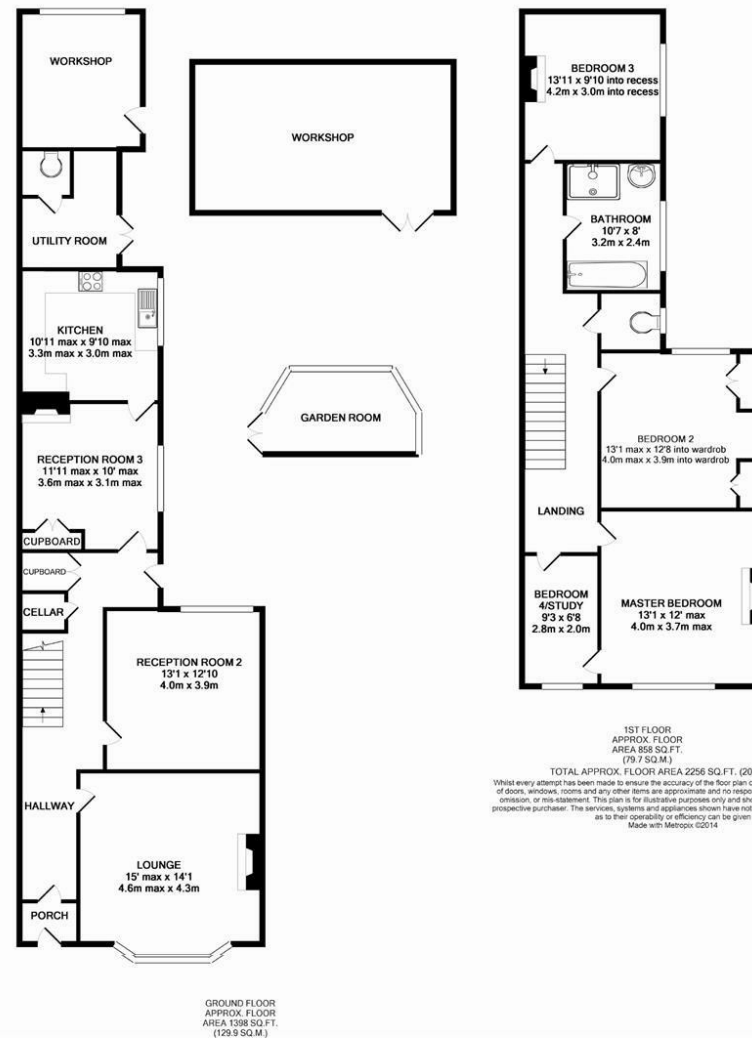
The property affords entrance hallway, three reception rooms, cellar, kitchen, outbuildings, including summer house, four bedrooms, family bathroom with separate WC, front & rear gardens, off road parking and garage, gas fired central heating and double glazing.

The rear garden features a delightful ornamental pond and a host of mature shrubs and trees. The property has potential for further development, subject to planning consent.

- Victorian Semi-Detached Property
- Three Reception Rooms
- Four Bedrooms
- Garden Room
- Separate WC
- Front & Rear Gardens
- Outbuildings/Feature Pond
- Cellar
- EPC Grade D







Agents Notes: All measurements are approximate and quoted in metric with imperial equivalents and for general guidance only and whilst every attempt has been made to ensure accuracy, they must not be relied on. The fixtures, fittings and appliances referred to have not been tested and therefore no guarantee can be given and that they are in working order. Internal photographs are reproduced for general information and it must not be inferred that any item shown is included with the property.

970 Stratford Road, Solihull, West Midlands, B90 4ED
T: 0121 746 6411
Email: solihull@newman.uk.com

NEWMAN
SALES & LETTINGS