

4 Victoria Street,
Kettering, Northants, NN16 0BT

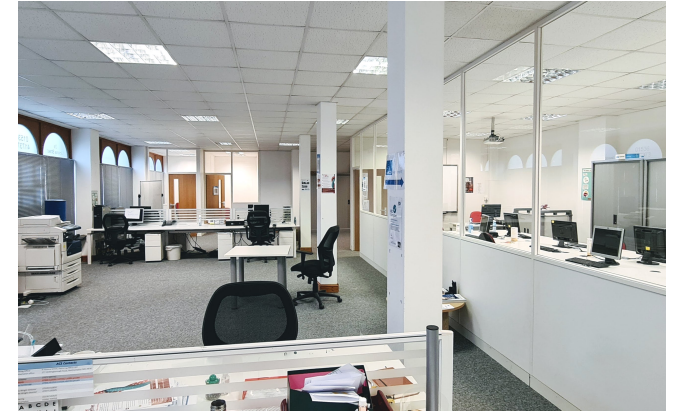
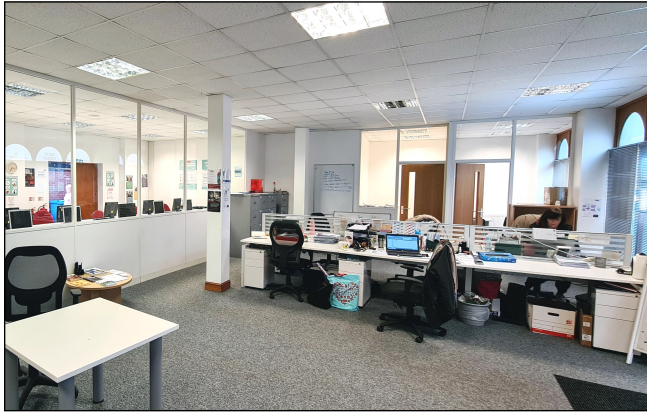
TO LET - c.2,000 sf ground floor office at £2,400/month
OR
FOR SALE - Freehold including 4 x 2bed flats. OIE £1m.



Agent's comment

“We have c.2,000 sq ft of town centre, ground floor office space available to let. We additionally have the freehold opportunity to acquire the whole building including the first floor residential units.”

potter learoyd
COMMERCIAL



OFFICE LETTING

- High standard office of c.2,000 sq ft
- Comprises large open plan office + separate glazed board room
- Kitchen + male/female welfare facilities
- Individual meeting rooms x4
- Excellent frontage to busy Montague Street/Victoria Street crossing. Large windows to Victoria Street.

FREEHOLD INVESTMENT OPPORTUNITY

- Comprises ground floor commercial + 4 x 2bed flats to first floor (residential is 100% occupied since day 1)
- Combined rental income - £63,800/year
- Offers in excess of £1,000,000



KETTERING

Location



Contact Richard Potter or Marcus Learoyd

01536 560 400

Misrepresentation Act: Potter Learoyd Commercial trading for themselves and for their vendors or lessors of this property whose agents they are, give notice that: (1) these particulars are set out as a general outline only, for the guidance of prospective purchasers or lessees and do not constitute the whole or any part of an offer or contracts; (2) all descriptions, dimensions, references to conditions, necessary permissions for use and occupation and other details contained therein are given without responsibility and prospective purchasers or lessees must not rely on them as statements or representations of fact and must satisfy themselves by inspection or otherwise as to their accuracy; (3) no employee of Potter Learoyd Commercial has any authority to make or give any representation or warranty or enter into any contract whatever the relation to the property; (4) rents or prices quoted in these particulars may be subject to VAT in addition.

potter learoyd
COMMERCIAL