



Leander Road, Brixton, SW2

4 bedroom flat - conversion for sale

£725,000

Share of Freehold

Property Details

Set within an attractive end-of-terrace Victorian property, this four-bedroom, two-bathroom split-level apartment is accessed via a private ground-floor entrance, with an internal staircase leading to the first-floor living areas. The reception room at the front offers generous proportions and a warm, inviting atmosphere, with a characterful bay window and additional sash window flooding the space with natural light. Alcove shelving provides an ideal display area, while a neutral palette and sleek flooring create a contemporary yet tranquil setting, with ample space for both living and dining. To the rear, the kitchen benefits from a double-aspect outlook and features a bay window with a window seat, cream cabinetry, and solid worktops. Also on this level is the family bathroom, fitted with a shower over the bath, and the third bedroom, which includes a decorative fireplace and bespoke alcove shelving. The upper floor houses three further bedrooms, including a principal bedroom with an en-suite shower, another well-proportioned double, and a versatile fourth room suitable as a children's bedroom, walk-in wardrobe, or home office.

Features

- Four bedrooms
- Two bathrooms
- End of terrace Victorian conversion
- Split-level
- Sought after street in the LTN
- Large supermarket in five minutes
- Brockwell Park a four-minute walk
- Herne Hill a ten-minute stroll
- Brixton a sixteen-minute walk
- Share of freehold. Chain-free.

Council tax band C EPC rating C (70)



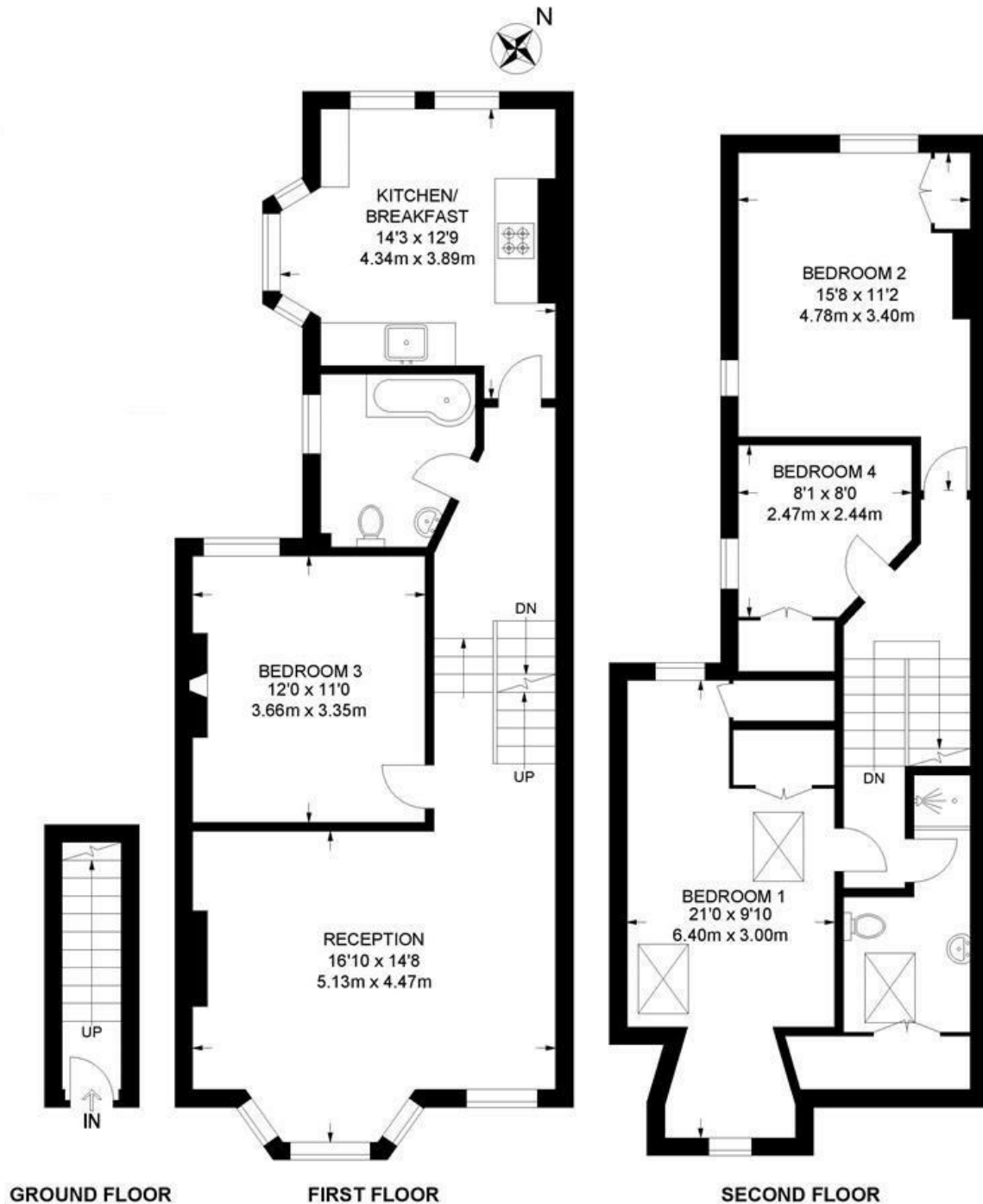


Leander Road, Brixton, SW2

Leander Road, SW2

4 Bedroom Flat

APPROXIMATE GROSS INTERNAL AREA: 1238 SQ FT / 115 SQ M



While we try our very best, floor plans are produced as a guide only and we take no responsibility for the precise accuracy with which any property is represented.

Leander Road, Brixton, SW2

